



**Bishop Beale Duncan**  
COMMERCIAL REAL ESTATE

752 Stirling Center Place  
Lake Mary, Florida 32746

**PROFESSIONAL/DENTAL OFFICE IN LAKE MARY**



## FOR LEASE

- + Lease Rate: \$27/SF NNN
- + Available SF: 2,070 SF
- + Building Size: 4,900 SF
- + Zoning: M-1A
- + Parking: Ample

## Highlights

- Currently Built-Out as a Dental Office
- Equipment can be Purchased or Leased if Needed
- Suitable For Use as a Medical or Professional Office
- Building Class: A
- Signage: Building



### PATRICK GOETZ

Vice President  
(407) 734.7210  
Pat@BBDRE.com

This offer is subject to errors, omissions, prior sale or withdrawal without notice.

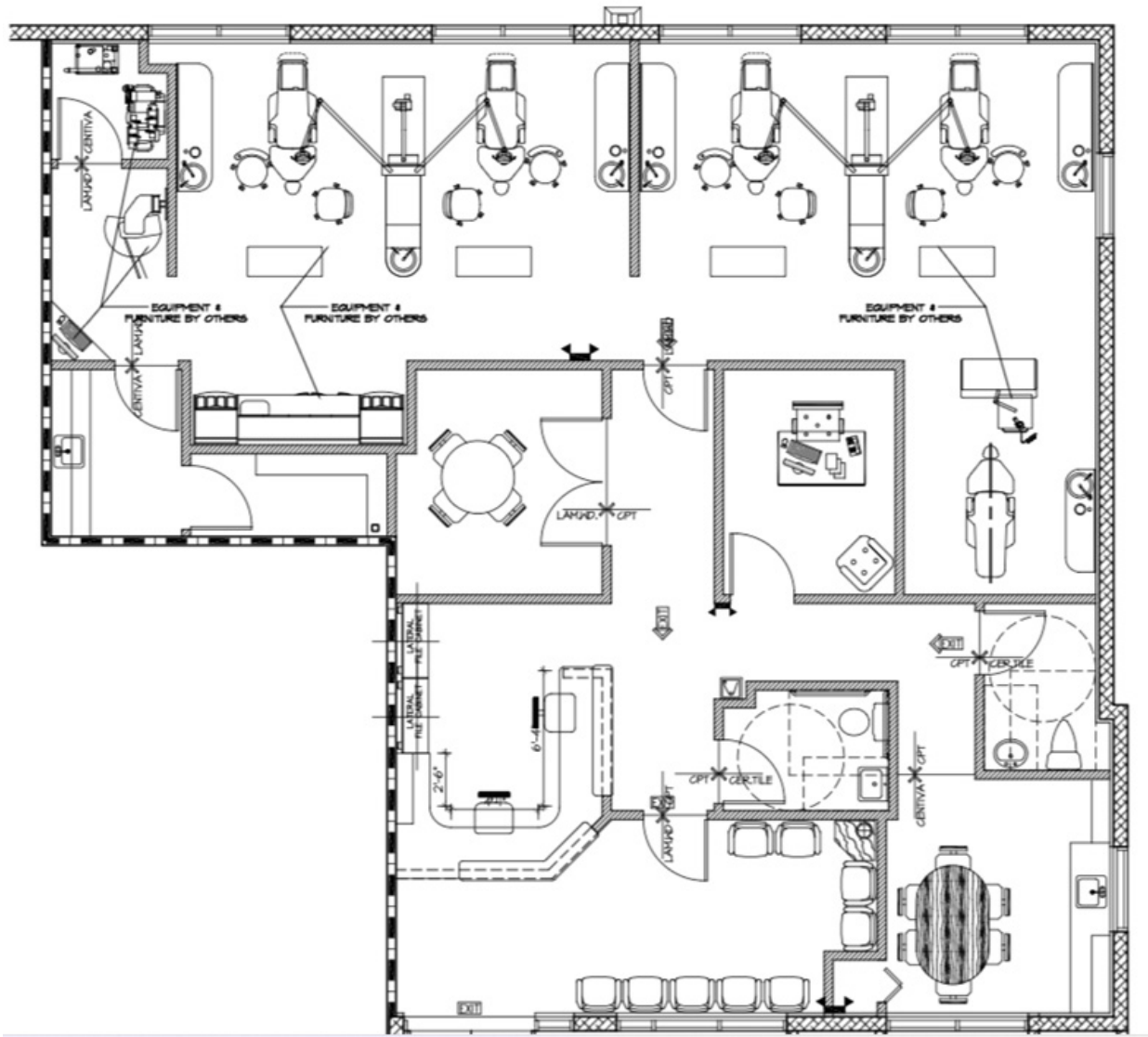


### BISHOP BEALE DUNCAN

250 N. Orange Ave., Ste. 1500  
Orlando, FL 32801 + (407) 426.7702

[www.BBDRE.com](http://www.BBDRE.com)

# Building Layout





# Interior Images



# Interior Images





# Location Aerial & Demographics



Radius	Population	HH Income	Businesses	Employees
1-Mile	5,790	\$139,329	929	12,761
3-Mile	66,737	\$142,434	5,901	52,751
5-Mile	133,845	\$135,761	10,433	83,002

