



Bishop Beale Duncan
COMMERCIAL REAL ESTATE

250 North Orange Ave. Suite 1030
Orlando, Florida 32801

MOVE-IN READY SUBLEASE



FOR SUBLEASE

- + Lease Rate: \$6,500/Month Full Service
- + Available SF: 3,343 SF
- + Lease Term Thru 7/31/2027
- + Available Immediately



Highlights

- All Included:
 - + Electric & Air Conditioning
 - + Janitor/Cleaning
- One block from the Orange County Courthouse
- Within walking distance from many restaurants, cafes, coffee shops, and bars
- Located off of W. Robinson St. which provides very quick access to I-4, State Road 408, East Colonial Drive (SR-50), and 17-92
- Move-In Ready
- Floor to ceiling windows, with spectacular downtown views

BUFFY GILLETTE

Senior Associate
(407) 734.7205
buffy@BBDRE.com

This offer is subject to errors, omissions, prior sale or withdrawal without notice.

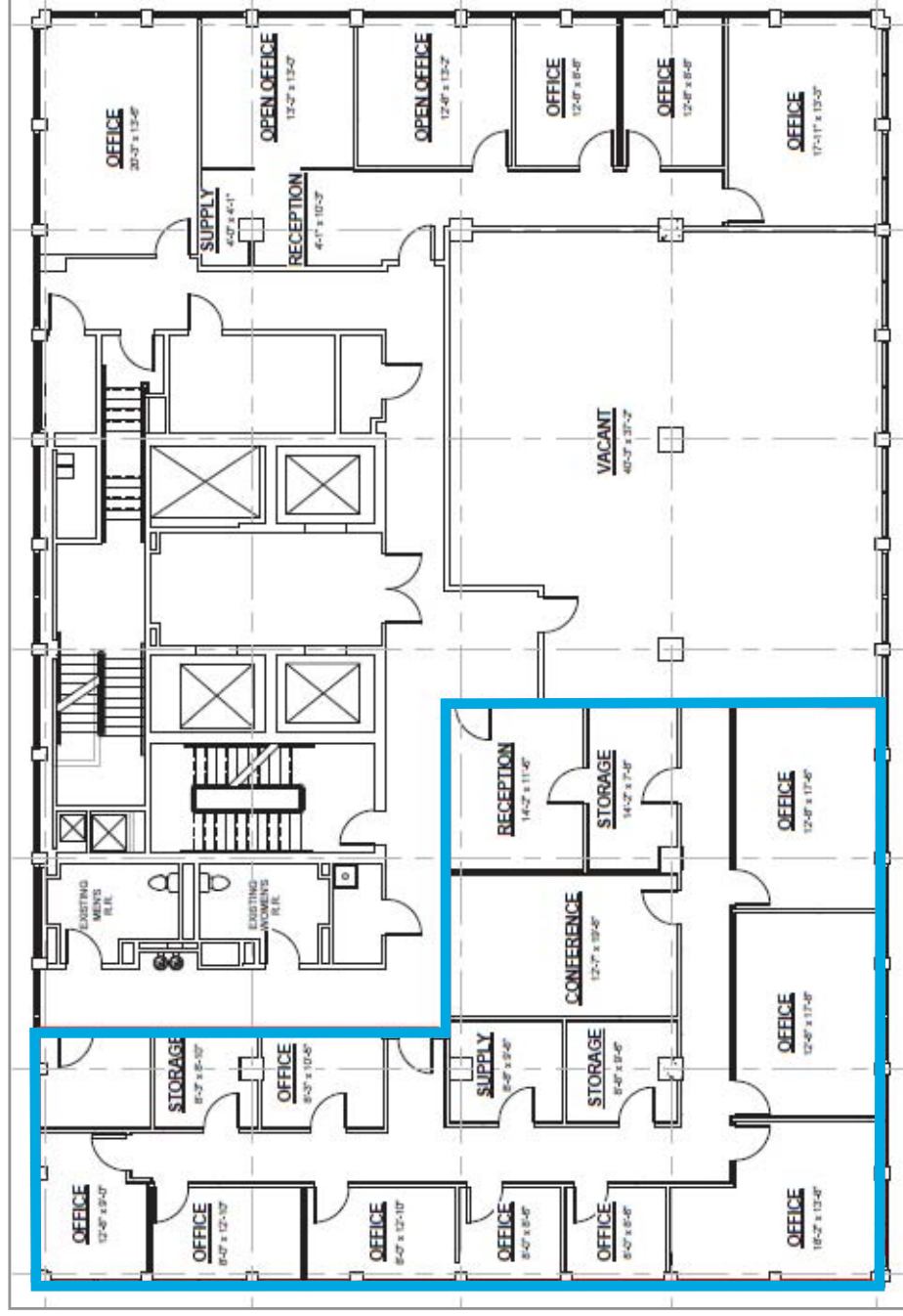


BISHOP BEALE DUNCAN

250 N. Orange Ave., Ste. 1500
Orlando, FL 32801 + (407) 426.7702

www.BBDRE.com

Floor Plan

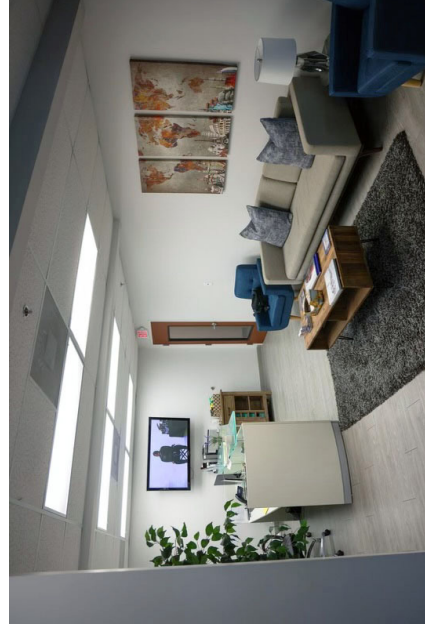
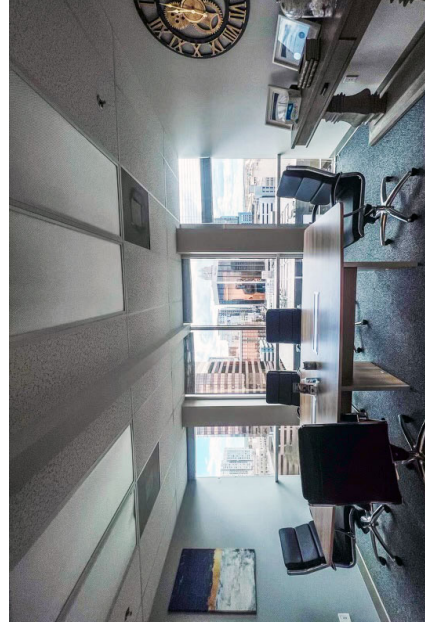
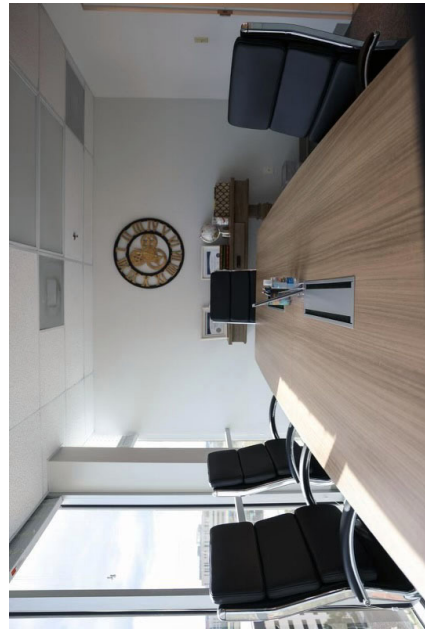
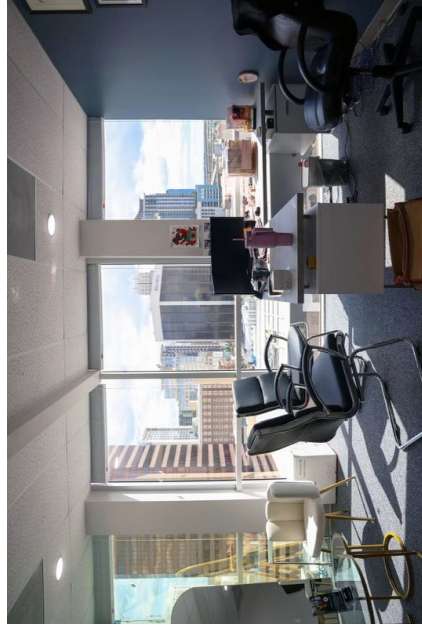
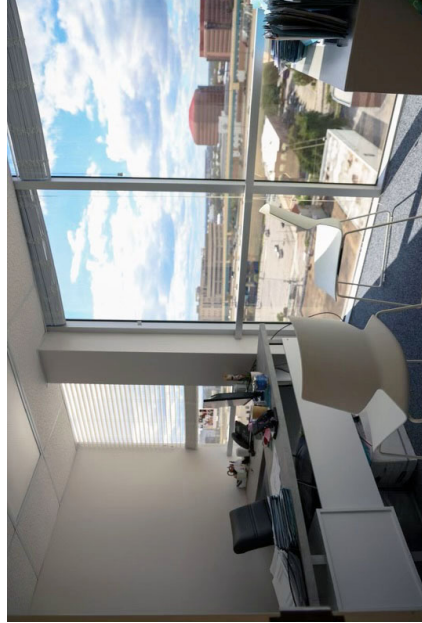
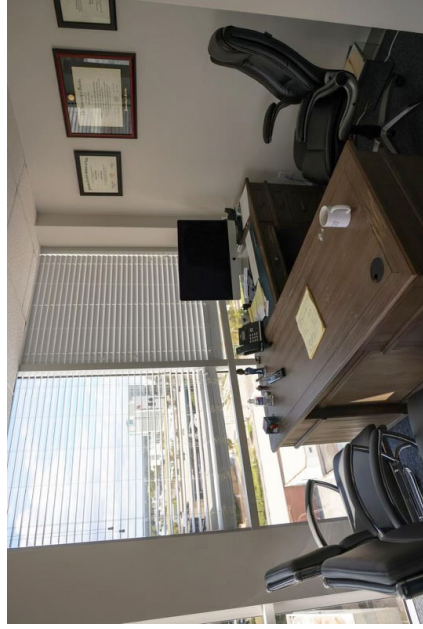
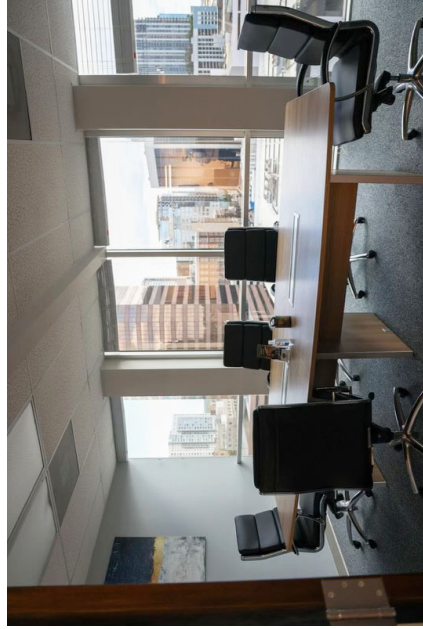


AMENITIES

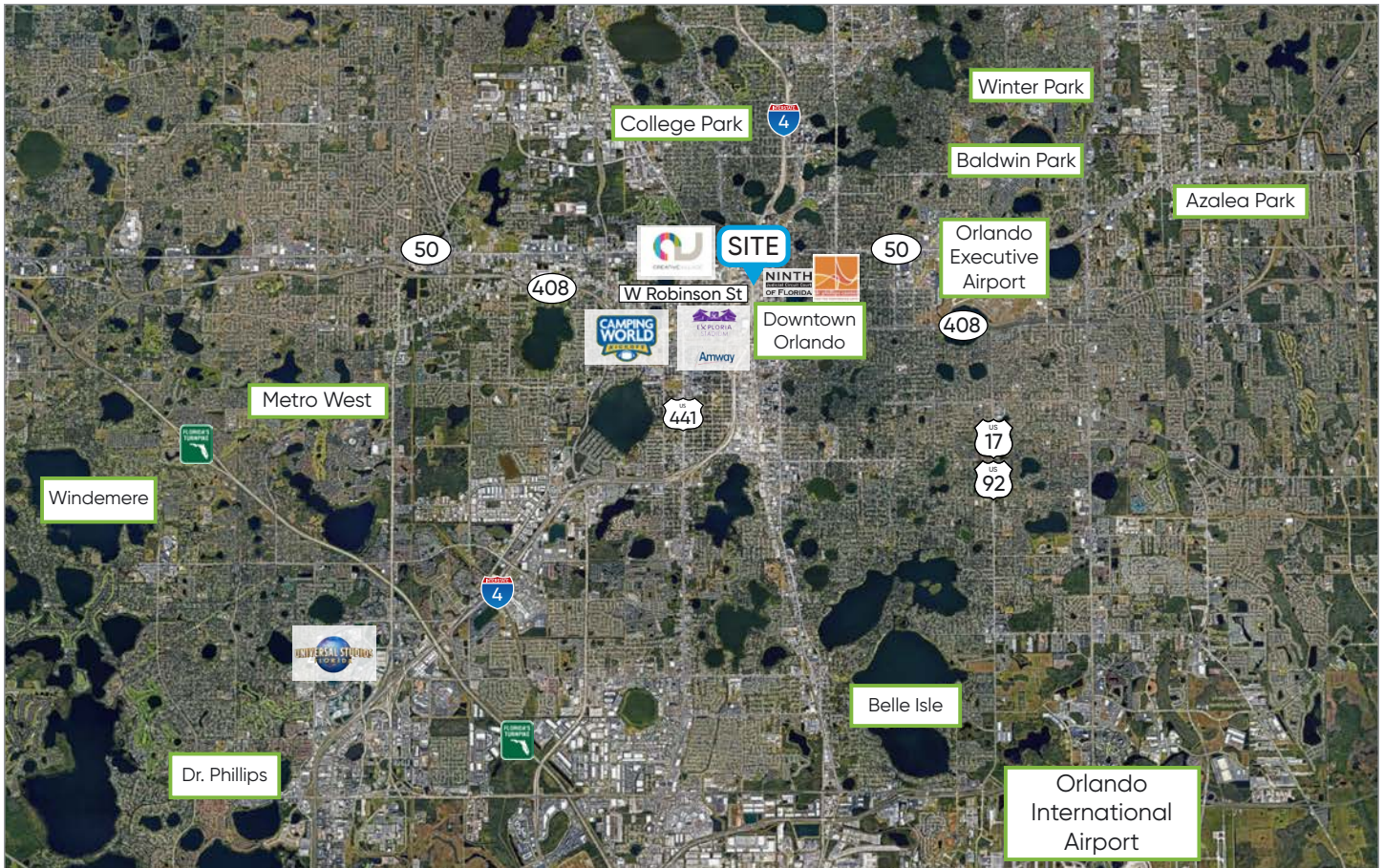
- Beautiful Views of Downtown
- Recently Updated Carpet and Paint
- Reception, 9 Offices, Conference Room
- Common Area Break Room on Floor



Interior Images



Location Details



3 Minutes

from Creative Village &
Amway Center

4 Minutes

from Exploria Stadium

5 Minutes

from Dr. Phillips Center

10 Minutes

from Orlando Health

8 Minutes

from Camping World
Stadium

24 Minutes

from Orlando International
Airport

Main Street of Downtown Orlando

The Downtown Office Tower is located within one block of the Orange County Courthouse, next to the central station hub for mass transit including commuter rail and bus transit and within Orlando's Central Business District consisting of 11+ Million square feet of office space and over 13,000 residential units.

It is easily accessible from Interstate-4, Orange Avenue and the major east/west downtown thoroughfare, Robinson Street.

