



Bishop Beale Duncan
COMMERCIAL REAL ESTATE

4025 Edgewater Drive
Orlando, Florida 32804

COLLEGE PARK FREESTANDING PROFESSIONAL OFFICE

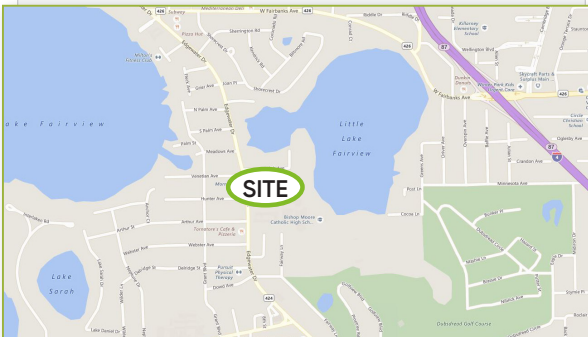


FOR LEASE

- + Lease Rate: \$30 / SF Modified Gross
- + Available SF: 1,881 SF
- + Land Size: 10,220 SF
- + Signage: Monument
- + Parking: 11 Spaces

Highlights

- Freestanding professional office building located on Edgewater Drive in North College Park
- The location provides great access to surrounding residences and commercial businesses of College Park
- Building Features:
 - 7 Private Offices
 - High-End Finishes
 - Conference Room
 - Kitchen and Break Room



PATRICK GOETZ
Vice President
(407) 734.7210
Pat@BBDRE.com

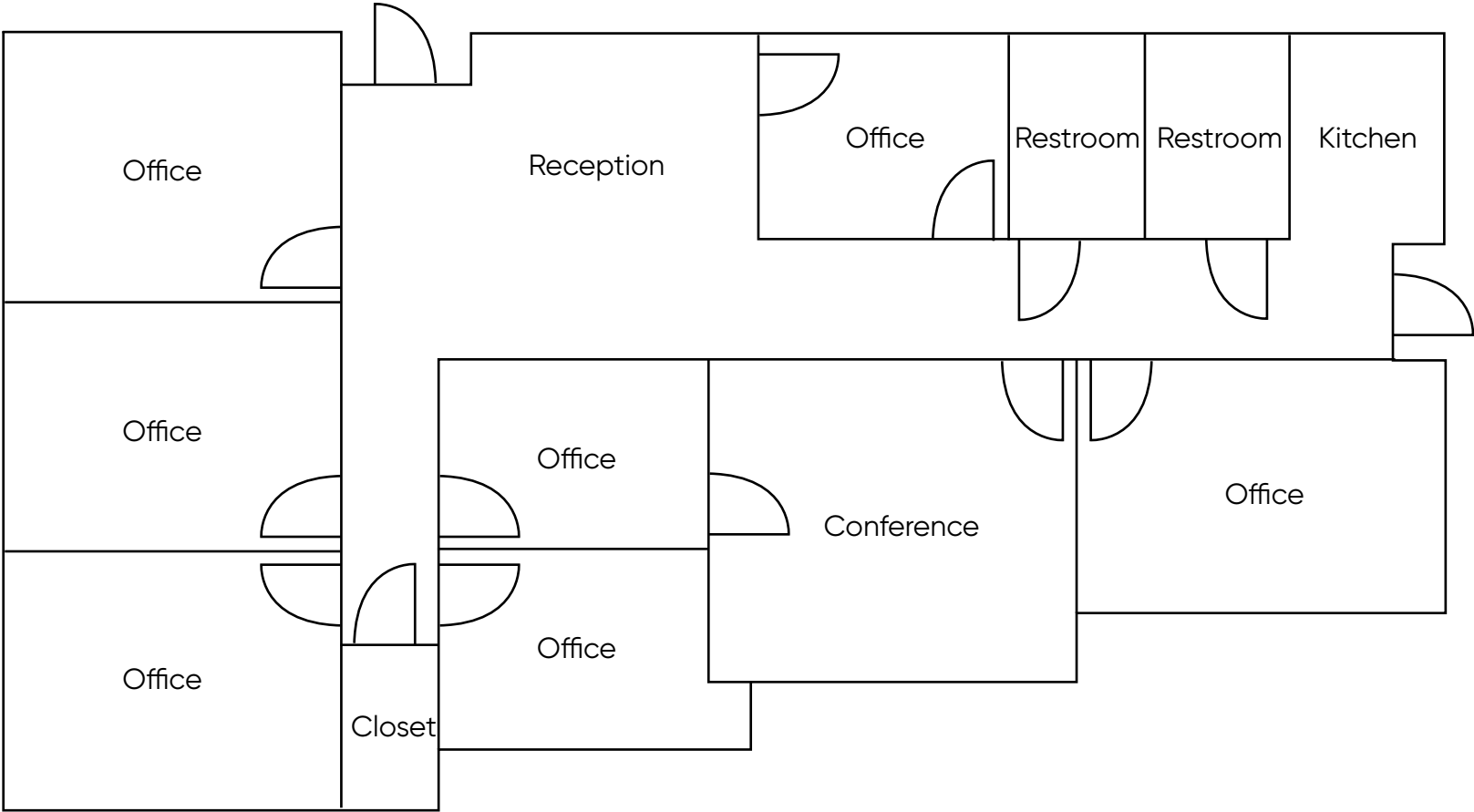
This offer is subject to errors, omissions, prior sale or withdrawal without notice.



BISHOP BEALE DUNCAN
250 N. Orange Ave., Ste. 1500
Orlando, FL 32801 + (407) 426.7702
www.BBDRE.com

Building Layout

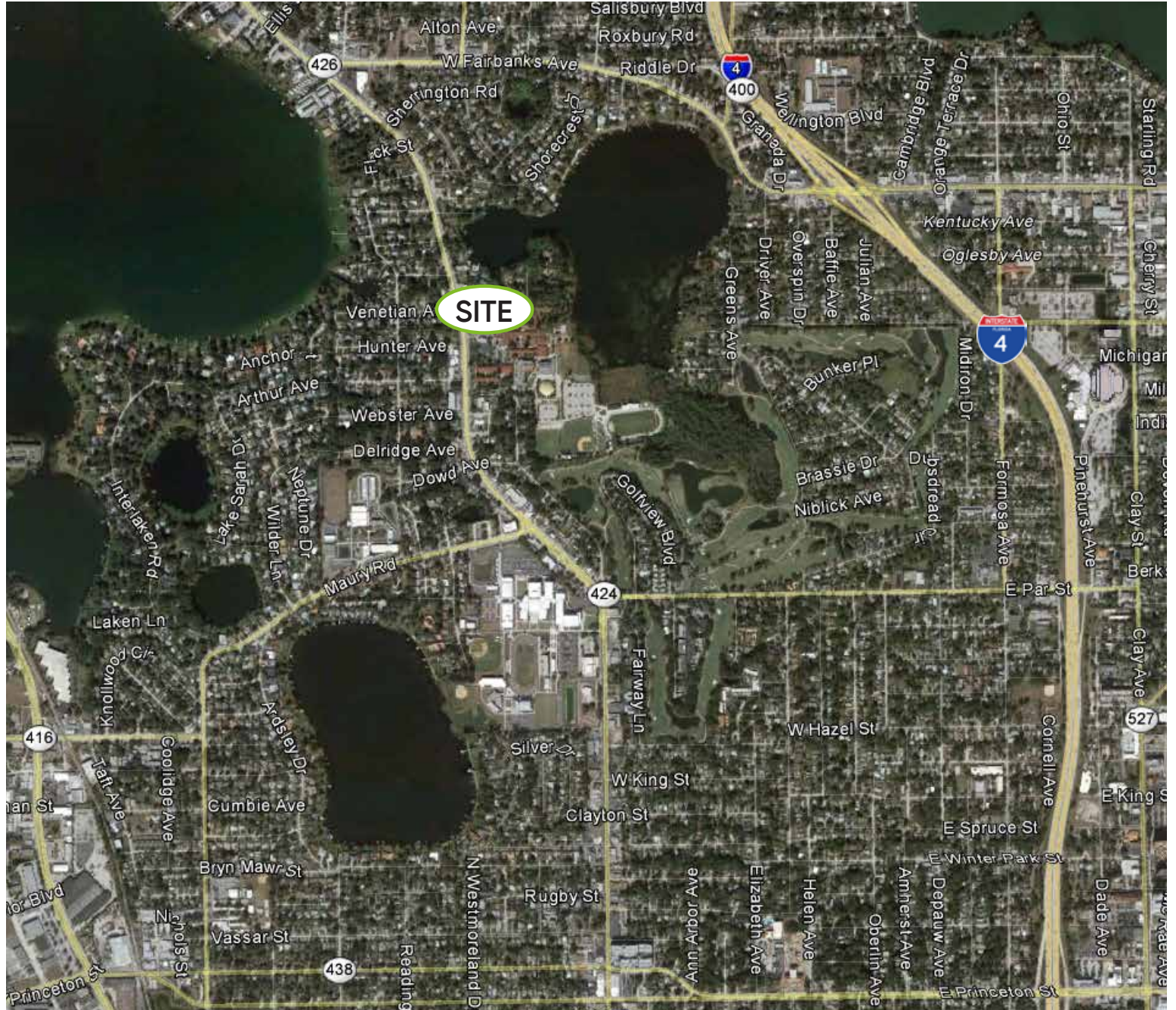
Parking



Edgewater Drive



Location Aerial



Exterior Images



Interior Images

