



Bishop Beale Duncan
COMMERCIAL REAL ESTATE

4061 Forrestal Avenue
Orlando, Florida 32806

SOUTH ORLANDO BAY WAREHOUSE UNITS

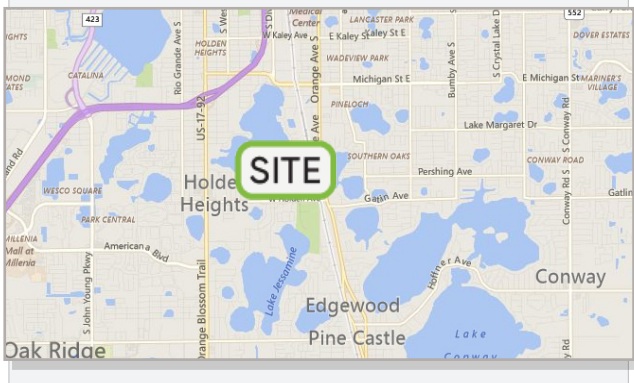
**SHARED TRUCK
WELL LOADING**

TWO SPACES AVAILABLE



FOR LEASE

- + **Lease Rate:** \$11 NNN
- + **Available:** 1,750 SF - 3,500 SF
- + **Zoning:** C-3



Highlights

- Located off South Orange Avenue, south of Downtown Orlando with great access to Interstate 4 and SR 408
- The warehouse bays have been recently renovated with interior improvements to both the warehouse and office spaces
- (2) 10' X 12' Grade Level Loading + a Shared Truck Well
- Ample Parking

PATRICK GOETZ

Vice President
(407) 734.7210
Pat@BBDRE.com

This offer is subject to errors, omissions, prior sale or withdrawal without notice.

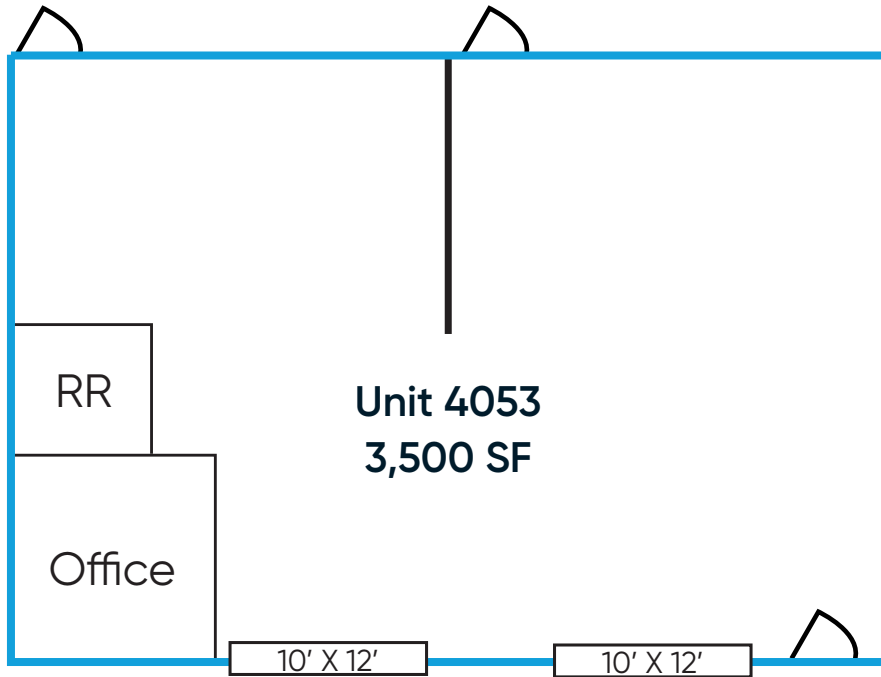


BISHOP BEALE DUNCAN

250 N. Orange Ave., Ste. 1500
Orlando, FL 32801 + (407) 426.7702

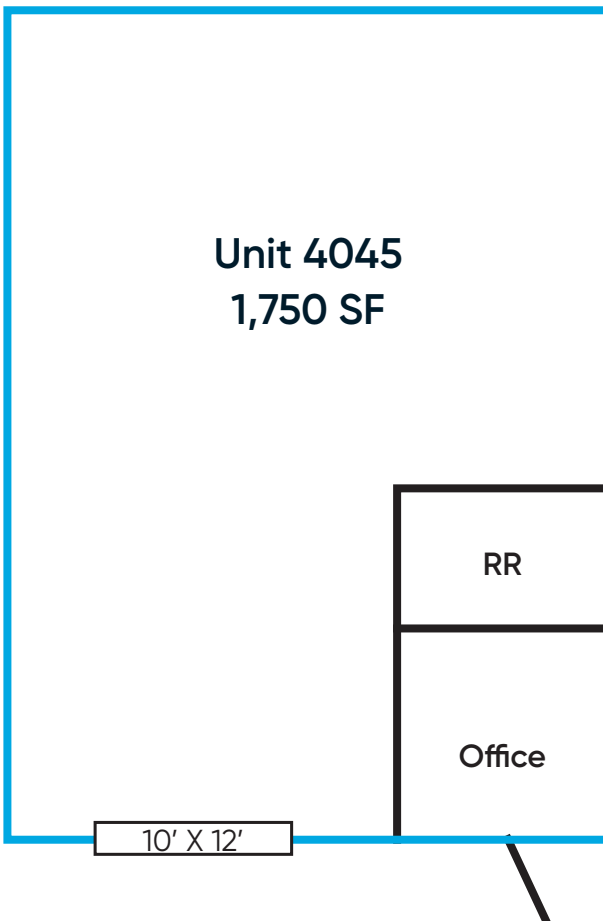
www.BBDRE.com

Floor Plan



AMENITIES

- Available Now
- 3,500 SF
- (2) 10' x 12' Roll Up Doors
- Private Office
- Private Restroom
- Warehouse Space

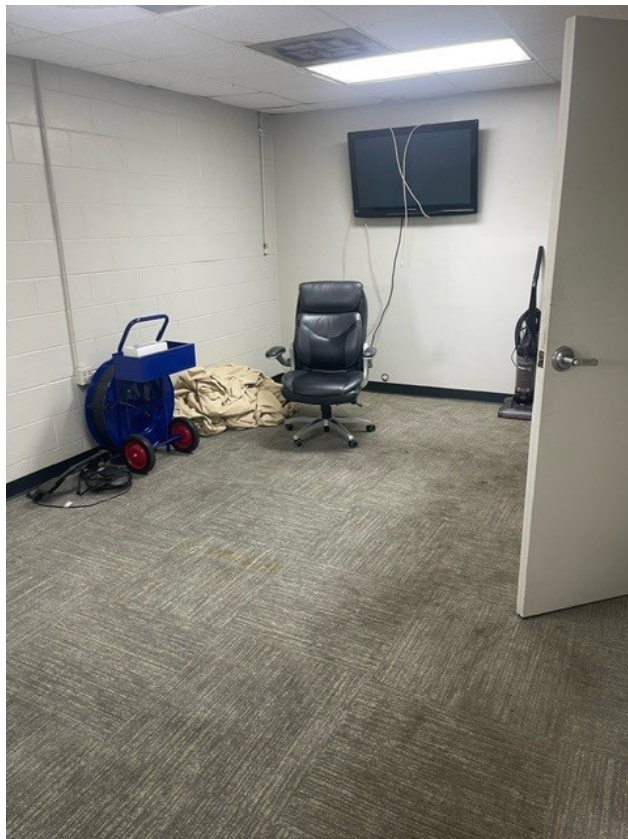


AMENITIES

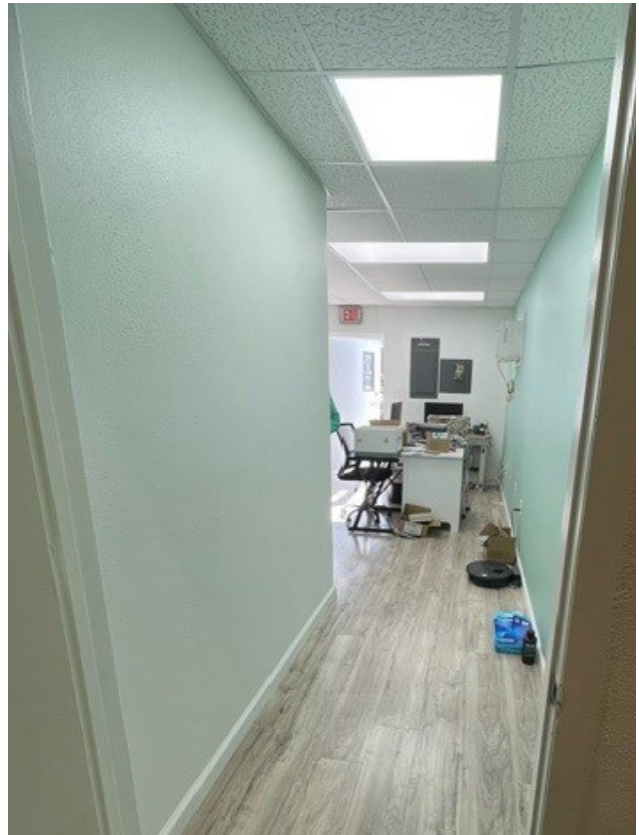
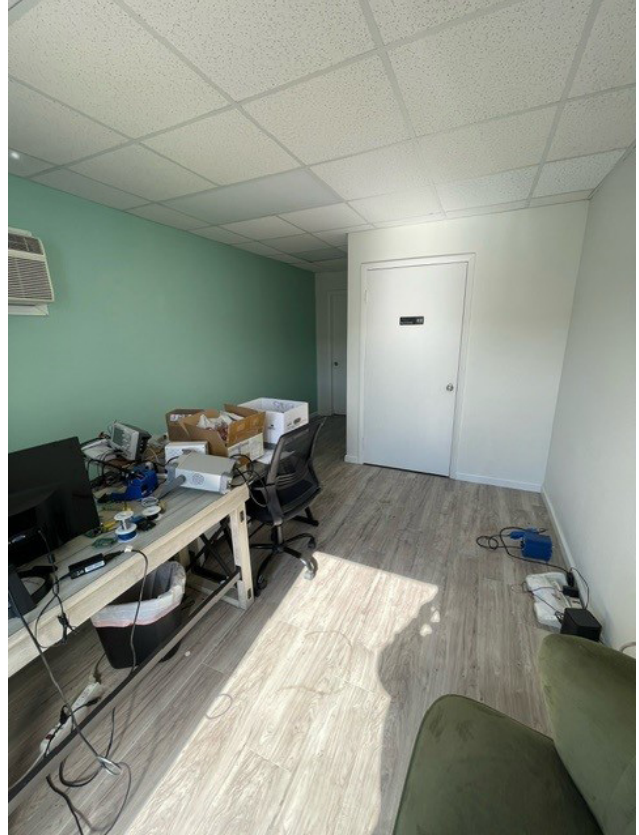
- Available Now
- 1,750 SF
- (1) 10' x 12' Roll Up Doors
- Private Office
- Private Restroom
- Warehouse Space



Unit 4053 Images



Unit 4045 Images



Site Plan

