



Bishop Beale Duncan  
COMMERCIAL REAL ESTATE

# TREMAINE BOYD

119 South Boyd Street  
Winter Garden, Florida 34787

## CLASS A RETAIL SPACE



## FOR LEASE

- + **Size:** 1,120 SF
- + **Lease Rate:** \$45/SF + NNN
- + **Parking:** Parking Garage Adjacent
- + **Visibility:** Prominent Signage



## Highlights

- One Block from Historic Plant Street and Adjacent to the Winter Garden Farmers Market
- More than 3,500 visitors attend the market weekly, the Winter Garden Farmers Market has been repeatedly reported as the Best Farmers Market in Florida
- Historic Downtown Winter Garden is listed on the National Registry of Historic Places
- Winter Garden's proximity to Orlando and the theme parks has made it an ideal spot for growth
- Tremaine Boyd is a three-story mixed-use urban infill project
- Located at the Southeast corner of Tremaine Street and South Boyd Street
- More information is available at [www.tremaineboyd.com](http://www.tremaineboyd.com)

### JP BEAULIEU, CCIM, CLS

Vice President  
(407) 734.7201  
JP@BBDRE.com

### REBEKAH MARRERO

Associate  
(407) 734.7220  
Rebekah@BBDRE.com



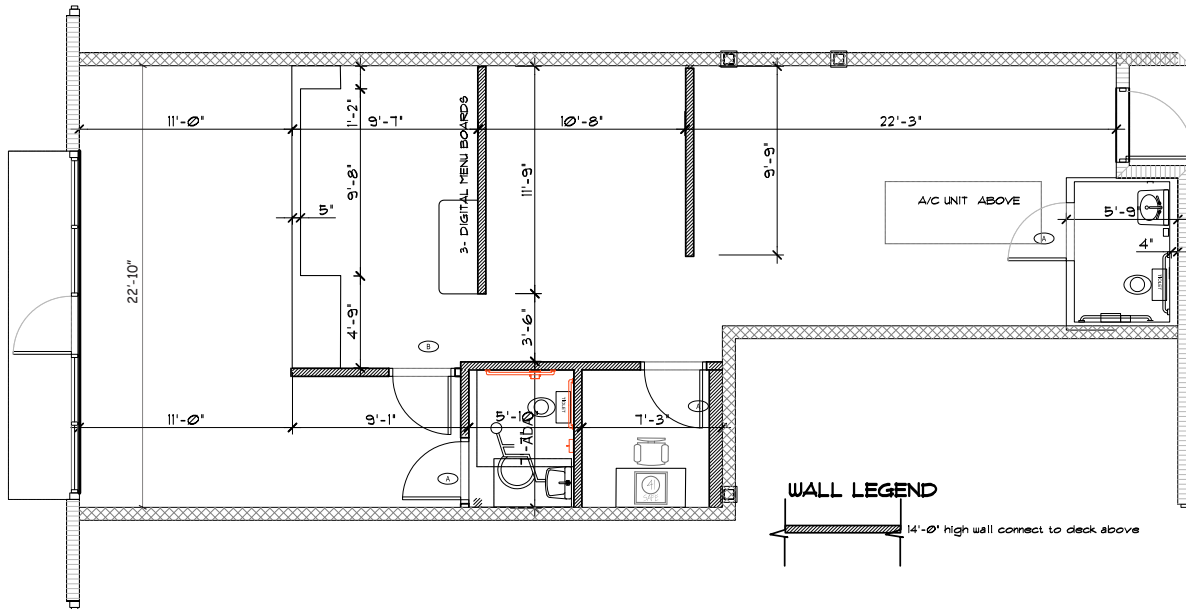
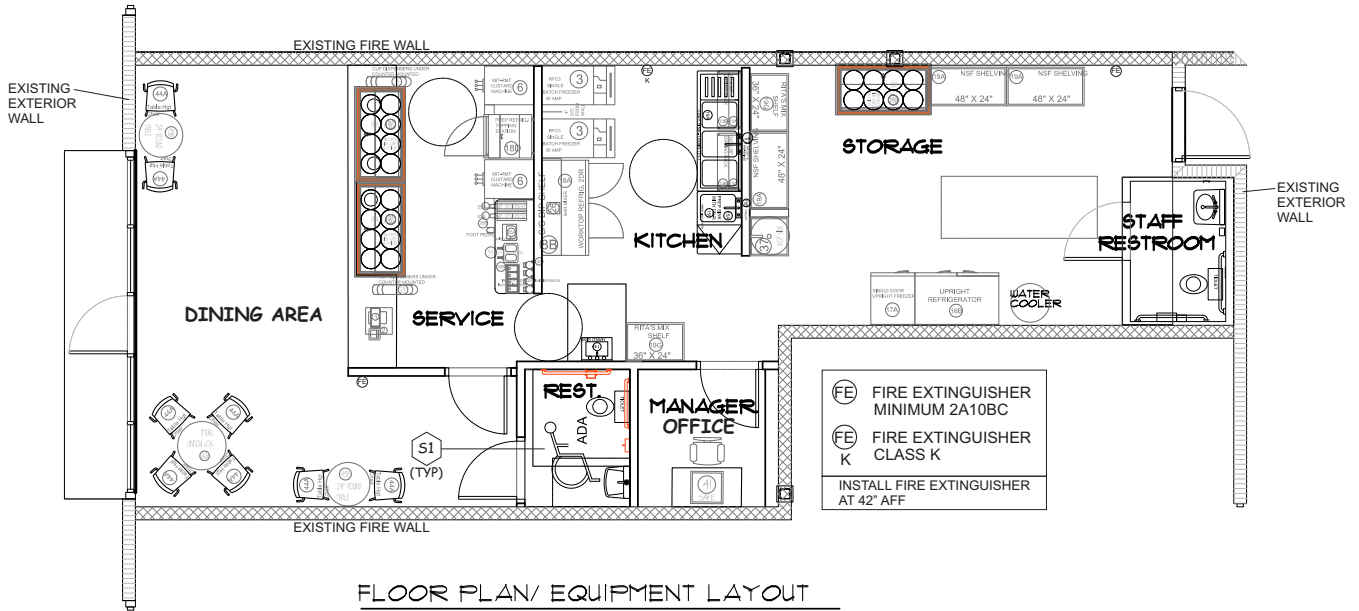
### BISHOP BEALE DUNCAN

250 N. Orange Ave., Ste. 1500  
Orlando, FL 32801 + (407) 426.7702

[www.BBDRE.com](http://www.BBDRE.com)

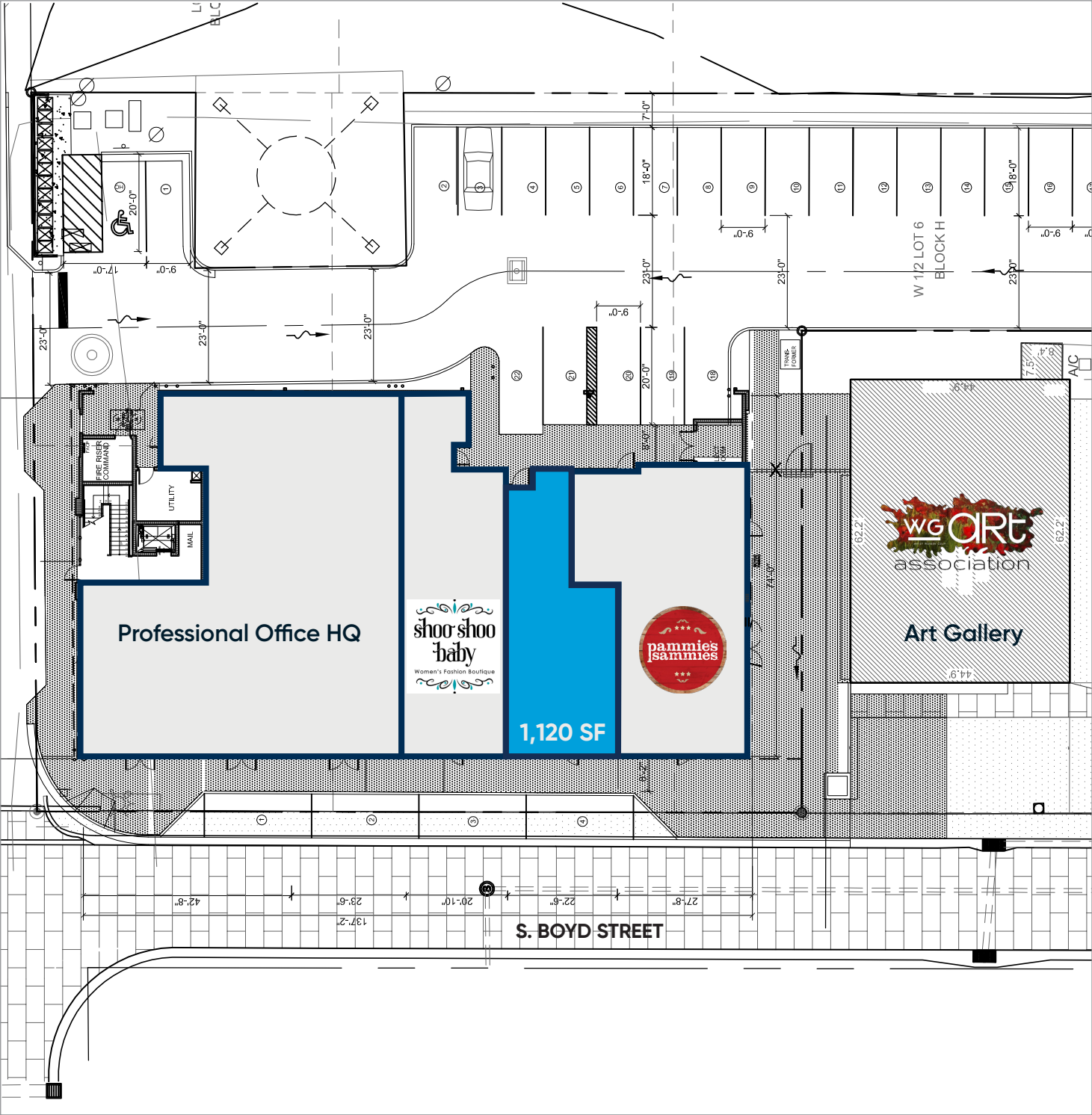
This offer is subject to errors, omissions, prior sale or withdrawal without notice.

## Floor Plan





# Site Plan





# Building Details



**AVAILABILITY**  
4,130 SF

**LEASE RATE**  
\$40/SF + NNN

**PARKING**  
527 Adjacent Garage  
Spaces + Street Parking



## PROPERTY DETAILS

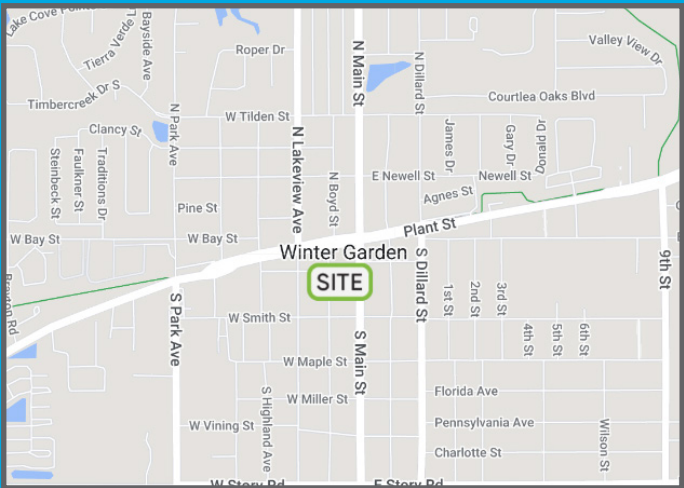
- The ground floor has flexibility to be divided as needed by individual office and/or retail tenants
- Beautiful street side dining, abundant parking and proximity to City Hall, Downtown Splashpad, West Orange Trail, the Farmer's Market and numerous City Events
- The second and third floor include 22 residential apartments

## PROPERTY DESCRIPTION

The TREMAINE BOYD development is a three-story mixed use urban infill project that has been transformative for downtown Winter Garden, Florida. Tremaine Boyd introduced more than 8,000 square feet of new restaurant/office/retail space and 22 residential units into the core of the City.

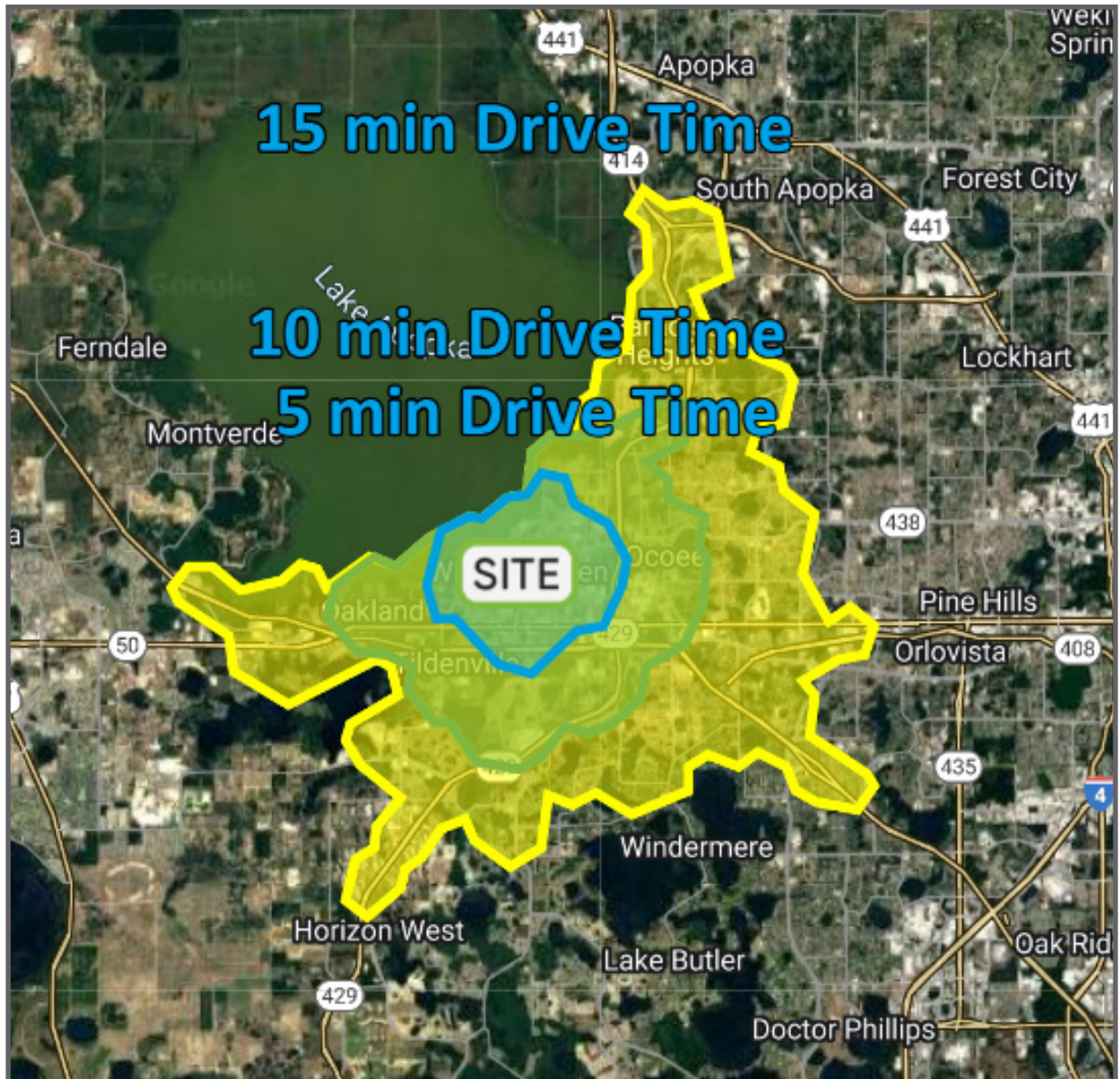
The development is located at the South-east corner of Tremaine Street and South Boyd Street; neighboring the Sobo Art Gallery and adjacent to the 527 space, free public parking garage.

More information is available at [www.tremaineboyd.com](http://www.tremaineboyd.com).





# Demographics



Drive Times	Population	HH Income	Businesses	Employees
5 Minutes	21,586	\$85,254	1,699	11,736
10 Minutes	48,194	\$107,632	3,679	24,817
15 Minutes	128,100	\$118,899	8,320	45,189