



Bishop Beale Duncan
COMMERCIAL REAL ESTATE

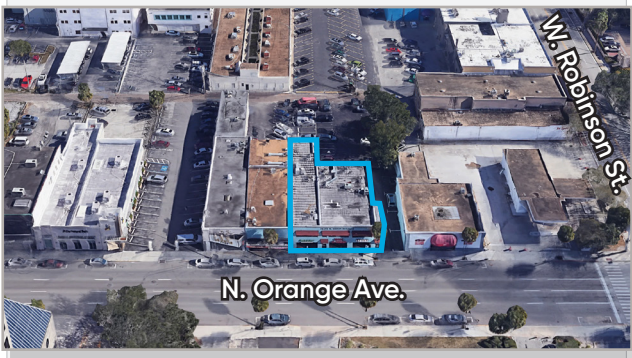
333 North Orange Avenue
Orlando, Florida 32801

DOWNTOWN ORLANDO OFFICE SUITE



FOR LEASE

- + Lease Rate: \$2,600/Month MG
- + Available SF: 1,400 SF
- + Building Size: 10,000 SF
- + Land Size: 0.5 Acres



Highlights

- Conveniently located within one block from the Orange County Courthouse
- 4 surface level parking spaces included with the option to rent 2 additional spaces
- Suite entrance directly off of North Orange Avenue
- Located off of W. Robinson St. which provides very quick access to I-4, State Road 408, East Colonial Drive (SR-50), and 17-92
- Move-In Ready
- Within walking distance from many restaurants, cafes, coffee shops, and bars
- Suite delivered with new flooring and paint

JONATHAN CLAYTON

Director
(407) 734.7212
Jonathan@BBDRE.com

This offer is subject to errors, omissions, prior sale or withdrawal without notice.

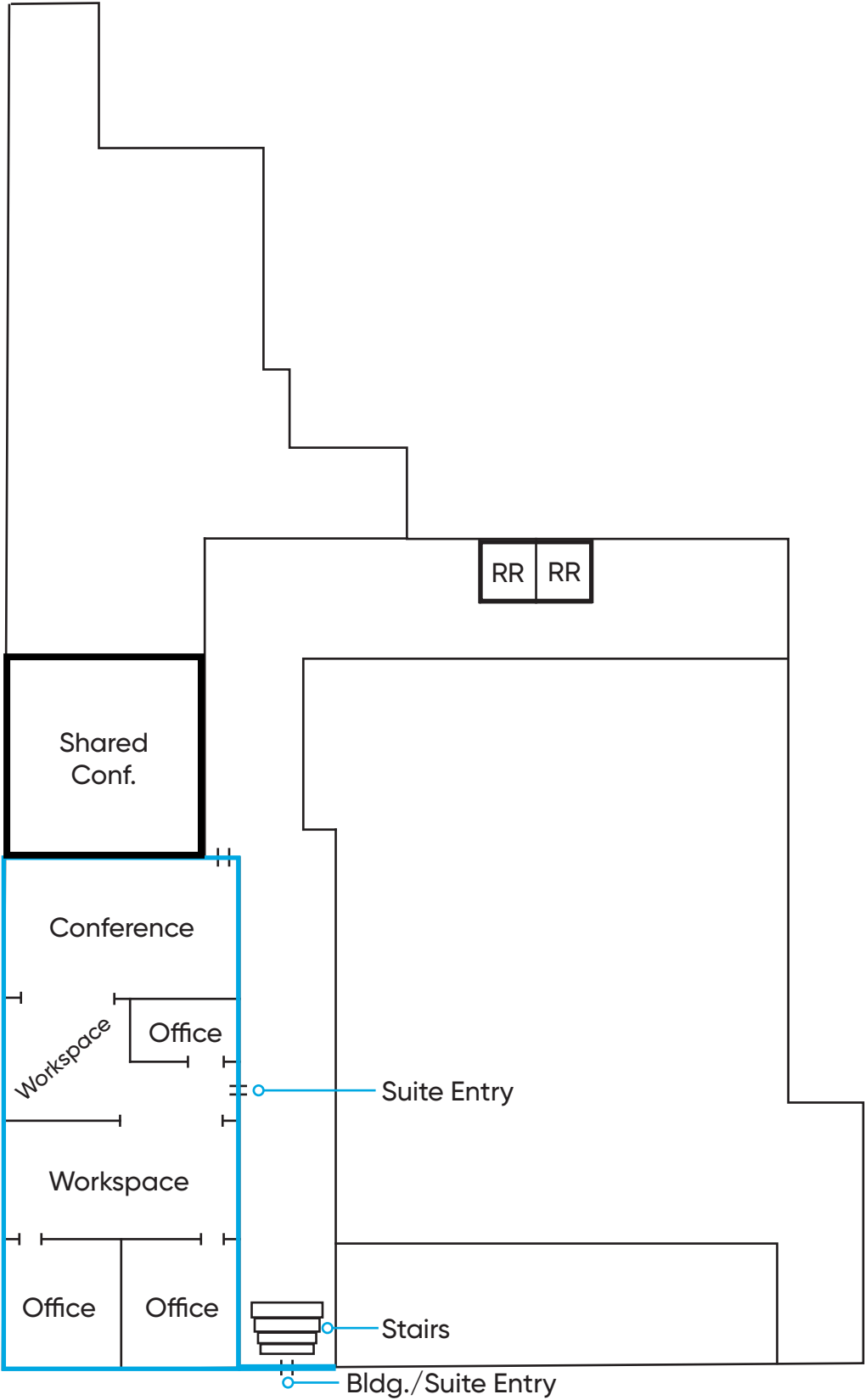


BISHOP BEALE DUNCAN

250 N. Orange Ave., Ste. 1500
Orlando, FL 32801 + (407) 426.7702

www.BBDRE.com

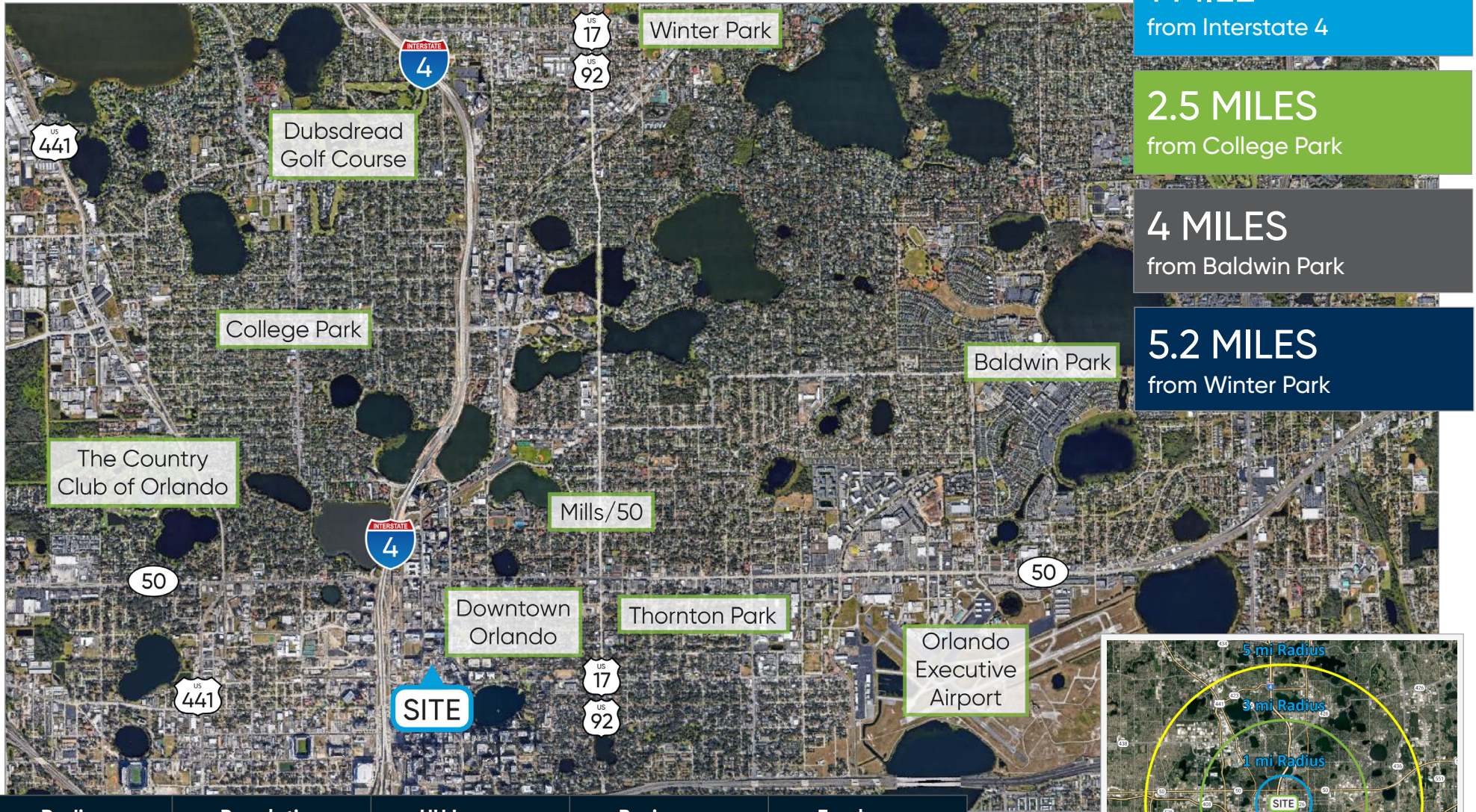
Floor Plan



Interior Pictures



Location Aerial



Radius	Population	HH Income	Businesses	Employees
1-Mile	21,812	\$84,385	6,187	50,551
3-Mile	103,225	\$90,805	16,078	127,079
5-Mile	297,274	\$80,865	31,666	238,777

