



Bishop Beale Duncan
COMMERCIAL REAL ESTATE

5066 Edgewater Drive
Orlando, Florida 32810

FREESTANDING OFFICE W/ RETAIL FRONTAGE + WAREHOUSE



FOR LEASE

- + Lease Rate: \$13.50 / SF MG
- + Available SF: 6,400 SF & Add. 3,900 SF Office/W.H. (optional)
- + Land Size: 42,726 SF
- + Zoning: C-3



Highlights

- Close to desirable College Park with easy access to Interstate 4, 408, 417, and 429
- Newly renovated modern office layout with air-conditioned warehouse space
- Great visibility on Edgewater Drive
- 1 Roll Up Door
- Built in 1984
- Ample Parking

PATRICK GOETZ

Vice President
(407) 734.7210
Pat@BBDRE.com

This offer is subject to errors, omissions, prior sale or withdrawal without notice.



BISHOP BEALE DUNCAN

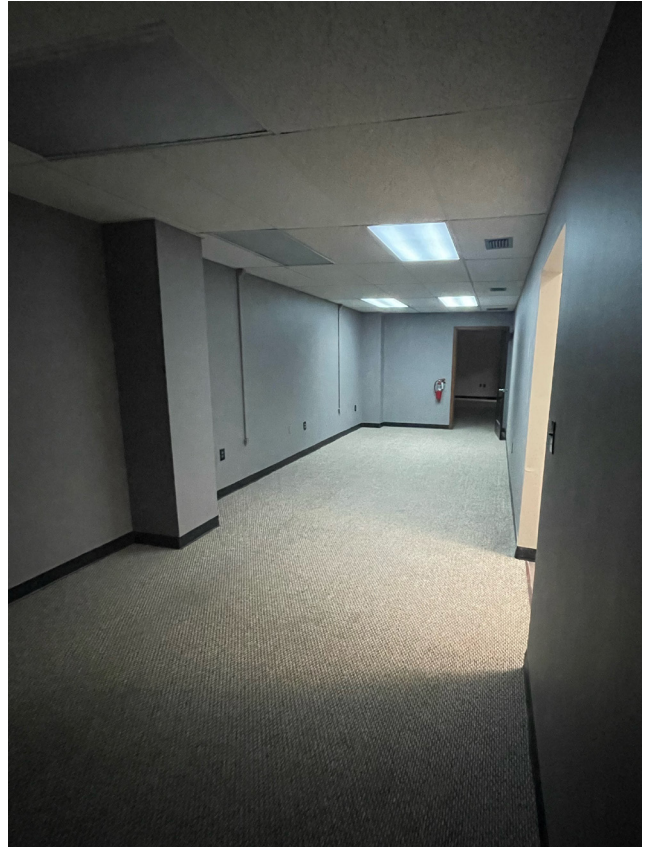
250 N. Orange Ave., Ste. 1500
Orlando, FL 32801 + (407) 426.7702

www.BBDRE.com

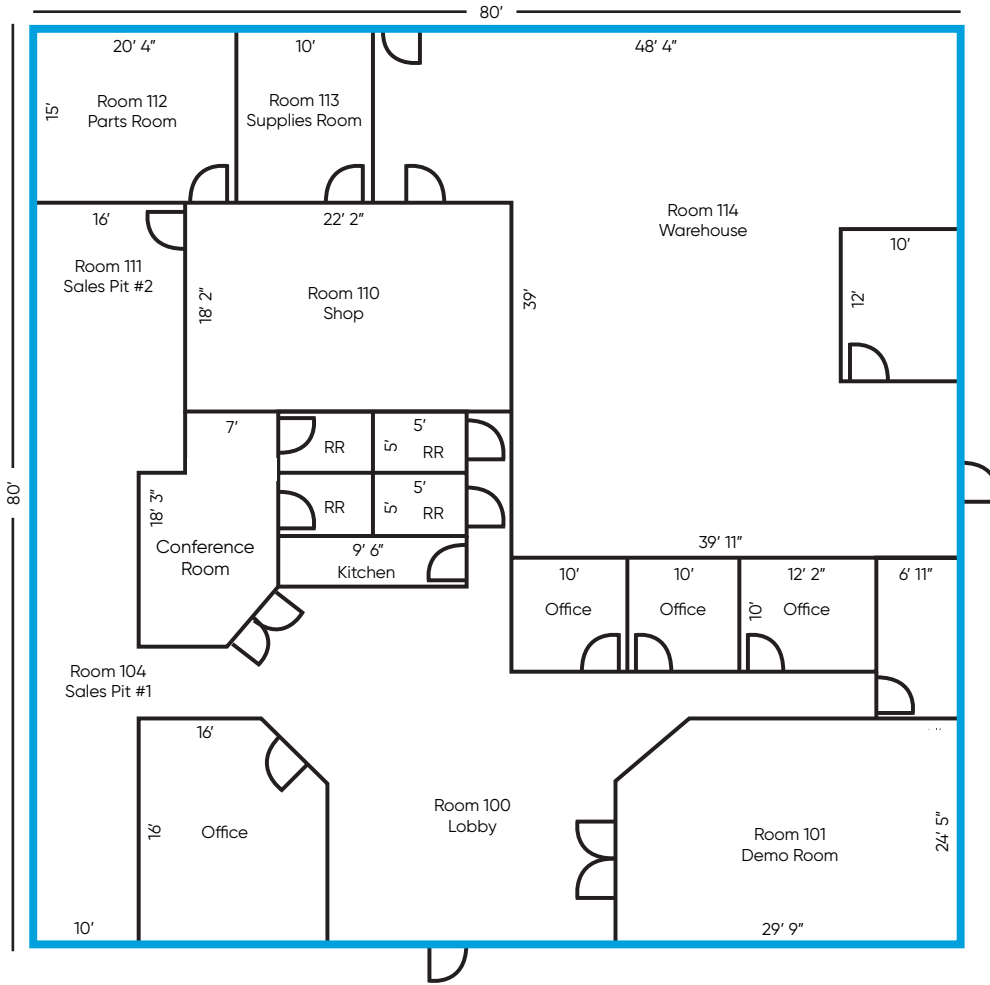
Building Interior



Building Interior



Building Layout



AMENITIES

- 6,400 SF
- Warehouse Size: Approximately 1,670 SF
- 4 Private Offices
- Private Restrooms
- Lobby
- Conference Room
- Kitchen
- Storage

Optional:
Additional 3,900 SF of
Office/Warehouse Available

AMENITIES

- 3,900 SF
- Office/Warehouse