



Bishop Beale Duncan  
COMMERCIAL REAL ESTATE

# ROBINSON OFFICE BUILDING

120 East Robinson St.  
Orlando, Florida 32801

PRIME OFFICE OPPORTUNITY IN DOWNTOWN ORLANDO



## FOR LEASE

- + Lease Rate: Call for Pricing
- + Available SF: 3,373 SF
- + Primary Use: Office
- + Parking: 9 Spaces
- + Office Furniture: Included



## Highlights

- **Confidential Listing - Do Not Disturb Tenant**
- Fully renovated Class A office building with high-end finishes and furniture included
- High visibility location with prominent signage
- 9 Private offices, conference room, breakroom and private study
- In walking distance (1 block) to Orange County Courthouse
- Close proximity to restaurants and recreational activities at Lake Eola



JP BEAULIEU, CCIM, CLS

Vice President  
(407) 734.7201  
JP@BBDRE.com

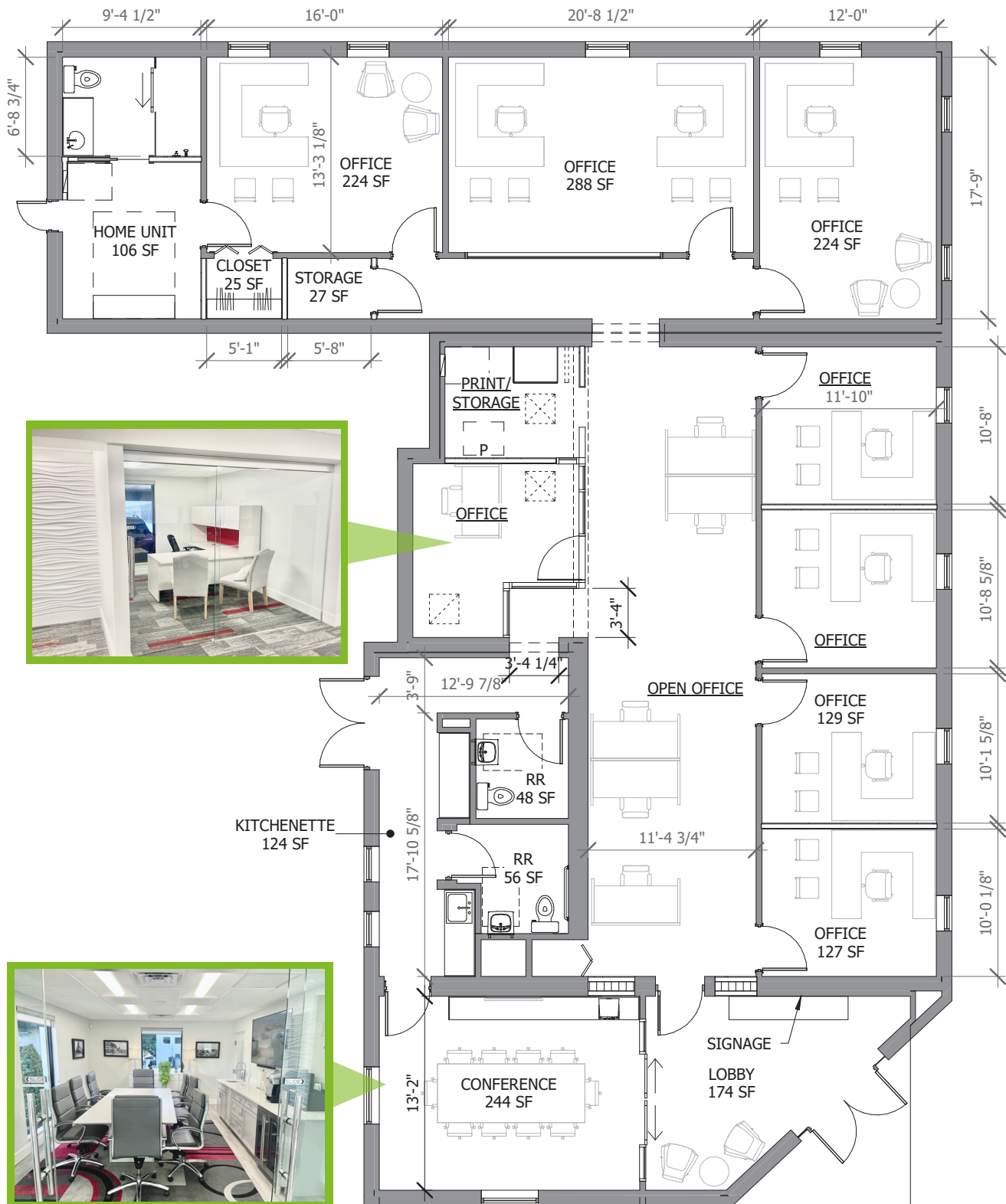


**BISHOP BEALE DUNCAN**  
250 N. Orange Ave., Ste. 1500  
Orlando, FL 32801 + (407) 426.7702

[www.BBDRE.com](http://www.BBDRE.com)

This offer is subject to errors, omissions, prior sale or withdrawal without notice.

# Floor Plan





# Interior Images





# Points of Interest

