

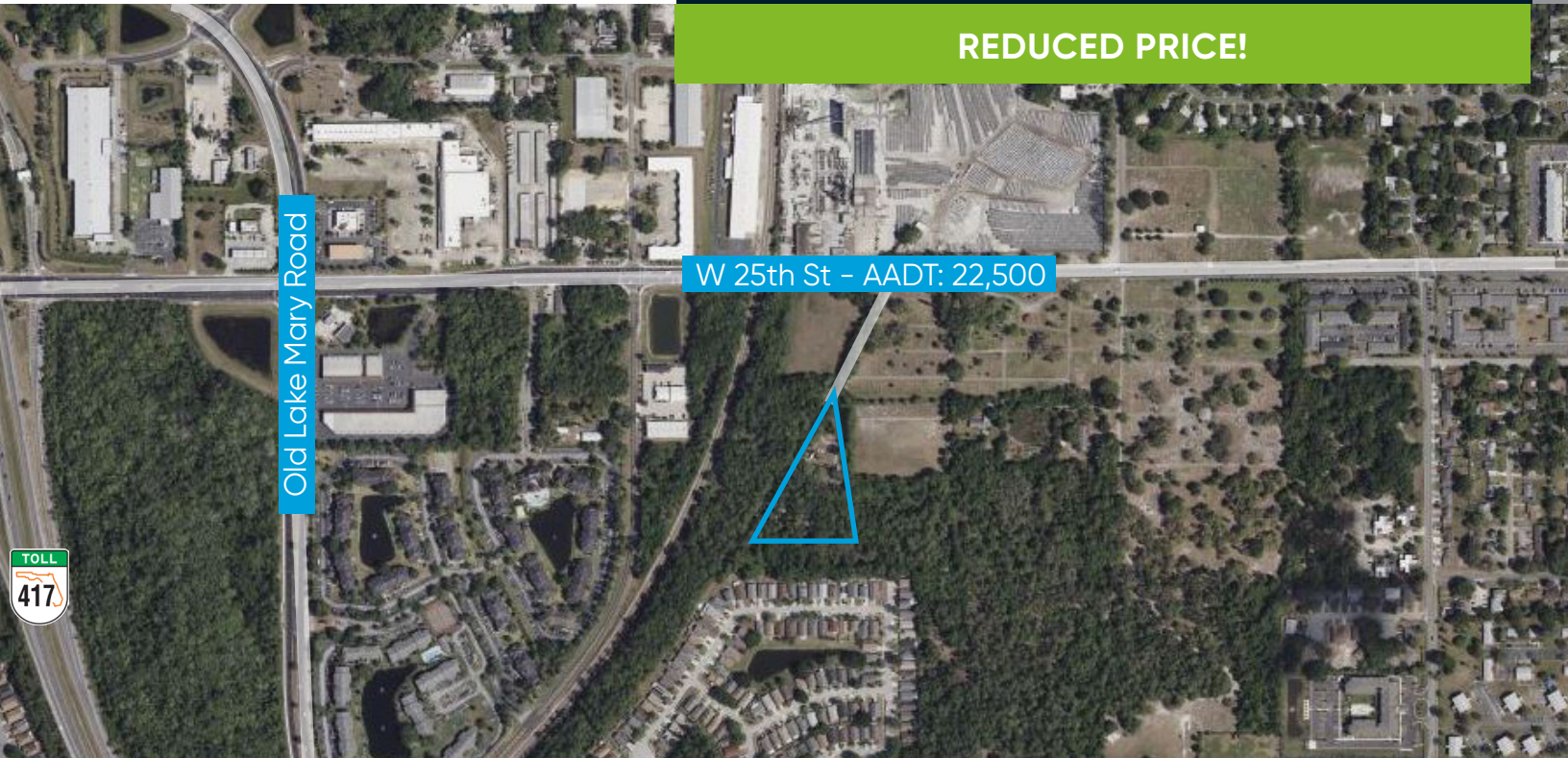


Bishop Beale Duncan
COMMERCIAL REAL ESTATE

2185 W 25th Street
Sanford FL 32771

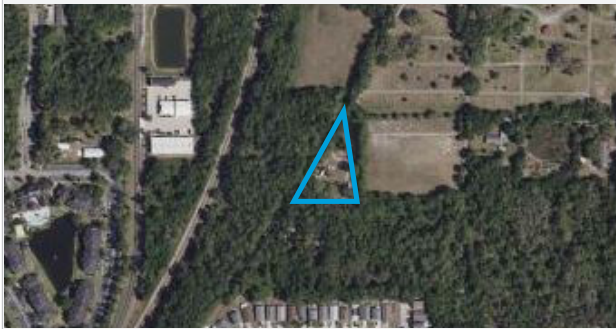
INDUSTRIAL LAND FOR SALE

REDUCED PRICE!



FOR SALE

- + Sale Price: \$285,000
~~\$400,000~~
- + Land Size: 1.98 AC
- + County: Seminole
- + Zoning: MI-1



Highlights

- * Outdoor storage allowed
- Great Location in the heart of Sanford
- Access off of 25th Street
- Excellent access with proximity to the 417 and Sanford International Airport
- Industrial Zoning
- Conceptual plans showing a Self-Storage layout
- Parcel ID: 02-20-30-300-018A-0000
- Please call for complete offering

JONATHAN CLAYTON

Director
(407) 734.7212
Jonathan@BBDRE.com

This offer is subject to errors, omissions, prior sale or withdrawal without notice.

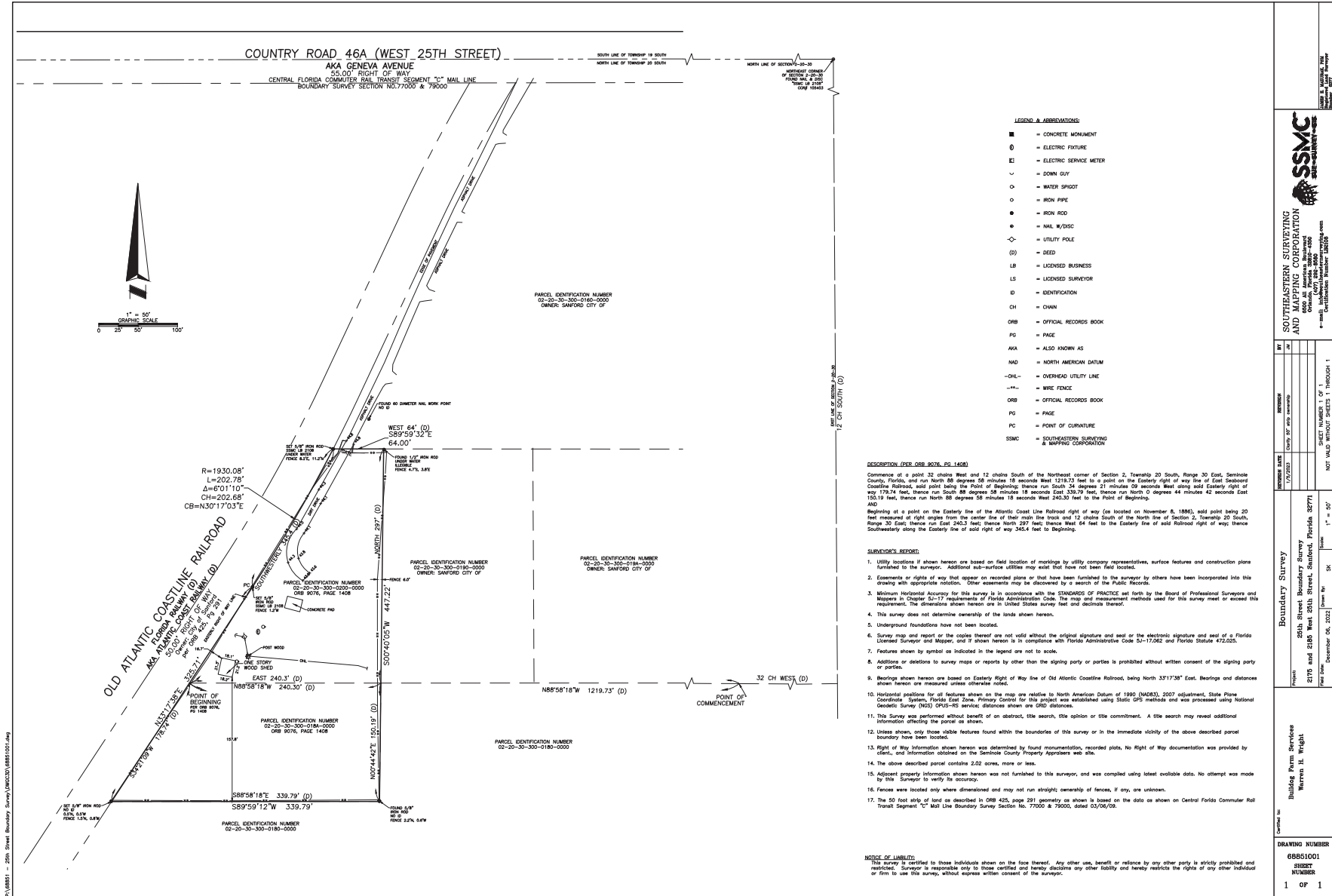


BISHOP BEALE DUNCAN

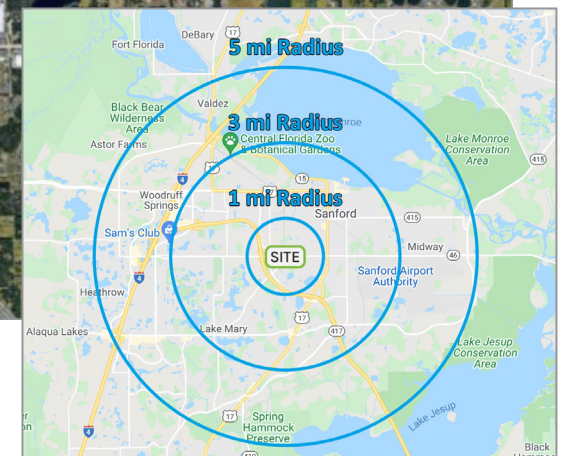
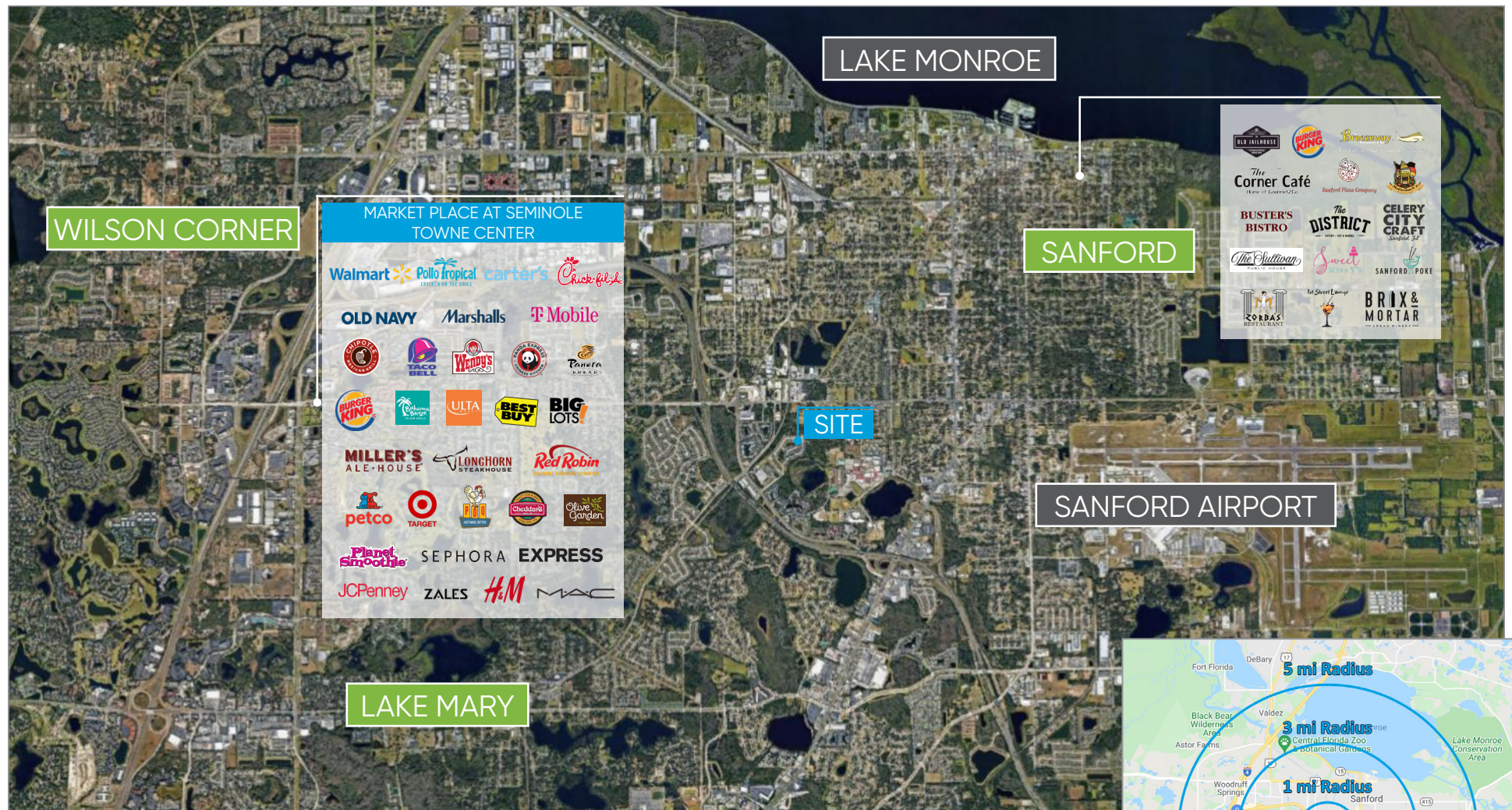
250 N. Orange Ave., Ste. 1500
Orlando, FL 32801 + (407) 426.7702

www.BBDRE.com

Property Survey



Location Aerial & Demographics



Radius	Population	HH Income	Businesses	Employees
1-Mile	12,306	\$54,303	361	2,960
2-Mile	73,624	\$61,467	3,883	33,906
3-Mile	122,450	\$71,143	8,416	80,684