



Bishop Beale Duncan  
COMMERCIAL REAL ESTATE

# BEVILLE PLAZA

667 Beville Road  
South Daytona, Florida 32119

**VALUE-ADD COMMERCIAL PROPERTY FOR SALE**



## FOR SALE

- + Price: \$750,000
- + Building Sizes: 13,086 SF
- + Price Per SF: \$57.31 / SF

## Highlights

- Offered well below replacement cost
- Minutes from I95, I4 & US 1
- This Highly-traveled Roadway Offers Great Exposure to Commercial Businesses in the Plaza
- Suitable for many Commercial Uses, Including Retail, Office and Medical
- 13,086 SF For Sale
- Monument and Storefront Signage
- Includes cash flow from tenants
- 23,500 AADT on Beville Road



**RUSSELL MAYS**  
Associate  
(407) 734.7209  
Russell@BBDRE.com

**JP BEAULIEU, CCIM, CLS**  
Vice President  
(407) 734.7201  
JP@BBDRE.com

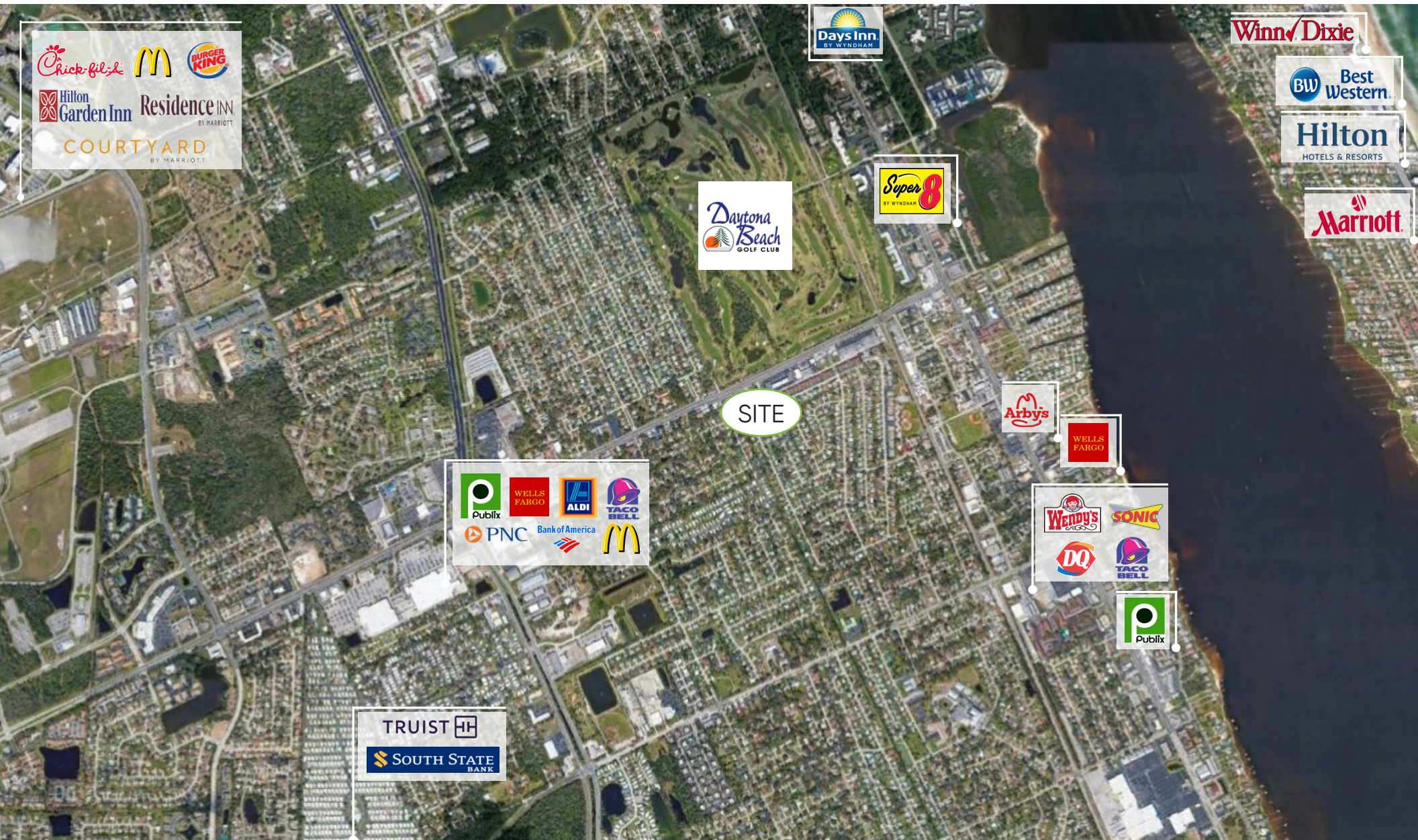


**BISHOP BEALE DUNCAN**  
250 N. Orange Ave., Ste. 1500  
Orlando, FL 32801 + (407) 426.7702

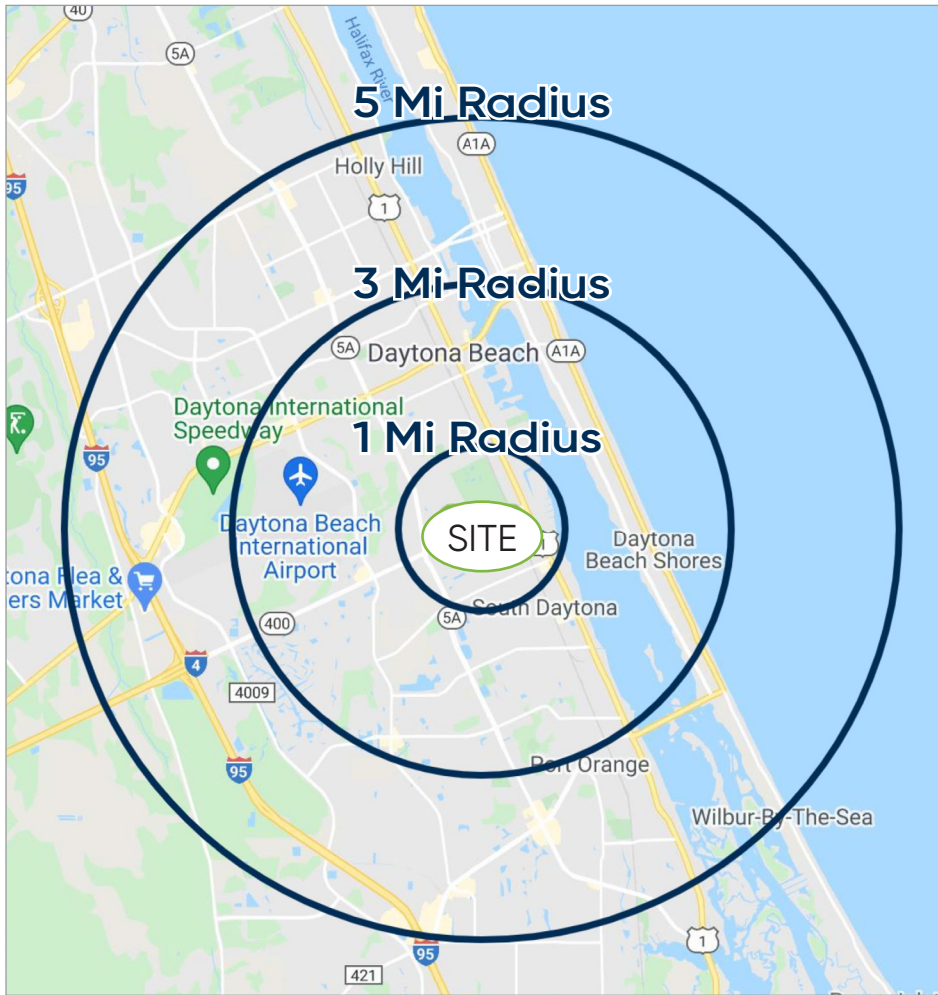
[www.BBDRE.com](http://www.BBDRE.com)

This offer is subject to errors, omissions, prior sale or withdrawal without notice.

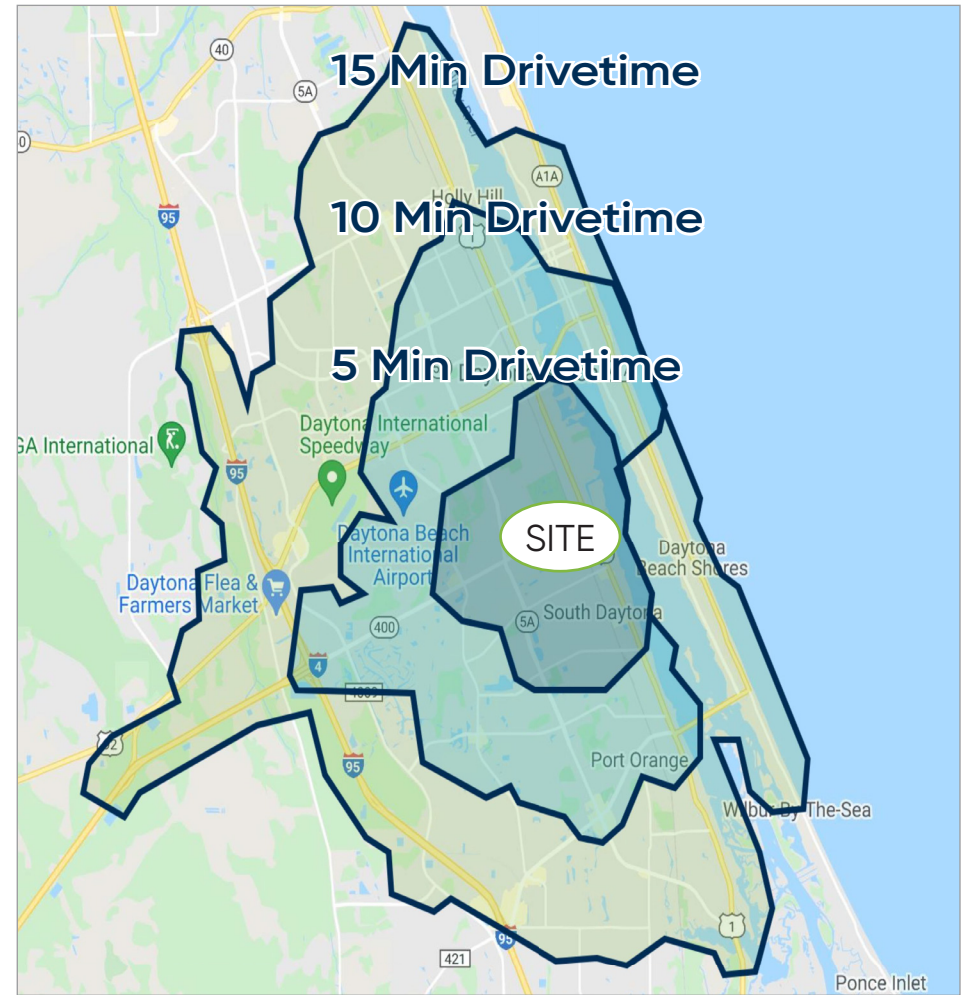
# Key Points Map Plan



# Demographics



Radius	Population	HH Income	Businesses	Employees
1-Mile	10,417	\$54,093	720	6,457
3-Mile	64,011	\$55,676	3,547	28,826
5-Mile	126,109	\$55,012	7,871	74,559



Drive Times	Population	HH Income	Businesses	Employees
5-Minutes	25,117	\$39,918	1,536	12,766
10-Minutes	776,811	\$42,212	4,841	41,831
15-Minutes	142,288	\$45,622	8,673	80,254

