



Bishop Beale Duncan
COMMERCIAL REAL ESTATE

813 Bryan St.
Kissimmee, Florida 34741

OWNER USER OR INVESTMENT OPPORTUNITY

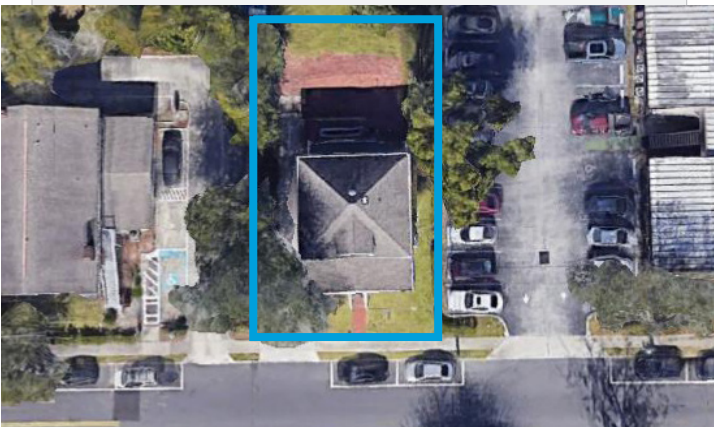


FOR SALE

- + Sale Price: \$325,000
- + Land Size: 4,748 sf
- + Building Size: 1,944
- + Parcel ID: 21-25-29-1920-000Y-0037
- + Zoning: O

Highlights

- Beautiful 2 story office building
- Located in the Heart of Downtown Kissimmee
- Steps away from the Osceola County Courthouse, close proximity to the amenities of Broadway Street
- Owner user or investment opportunity
- 25 minute drive to Downtown Orlando
- Excellent office location
- New first floor Carrier AC unit installed in 2021
- Attic is easily accessible (by permanent stairs) with ample space for storage



JONATHAN CLAYTON

Director
(407) 734.7212
Jonathan@BBDRE.com

This offer is subject to errors, omissions, prior sale or withdrawal without notice.



BISHOP BEALE DUNCAN

250 N. Orange Ave., Ste. 1500
Orlando, FL 32801 + (407) 426.7702

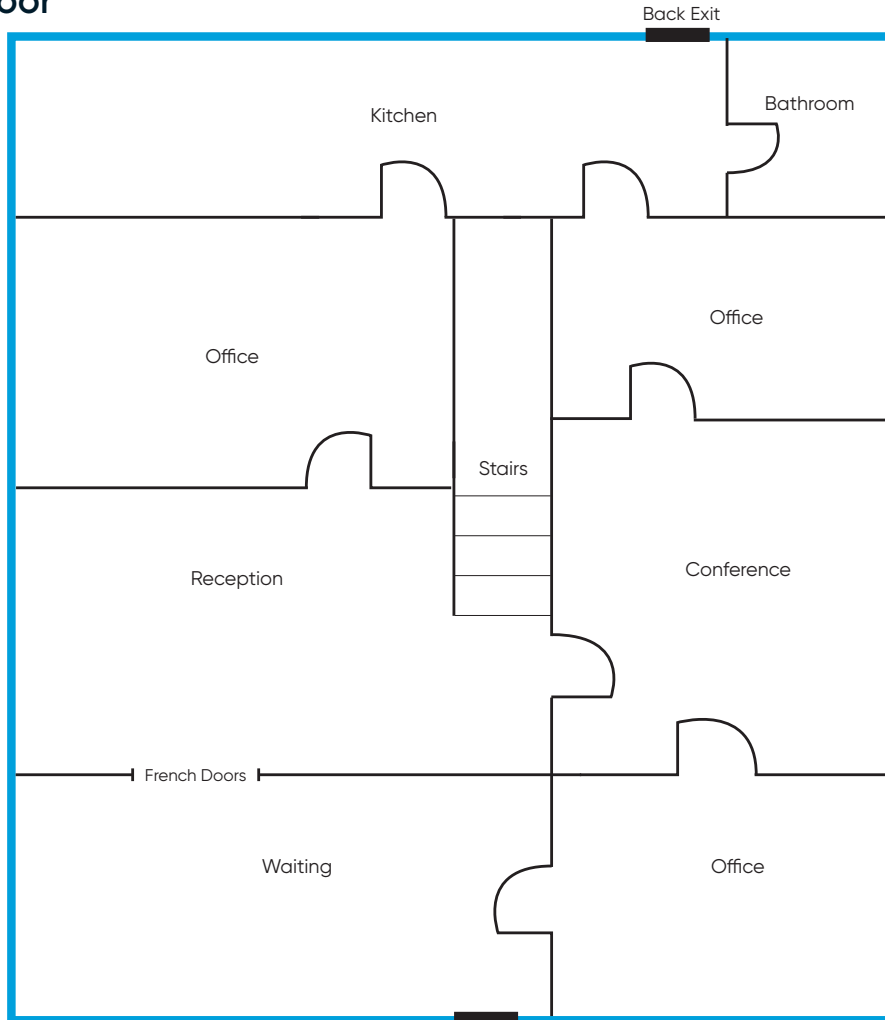
www.BBDRE.com

Images

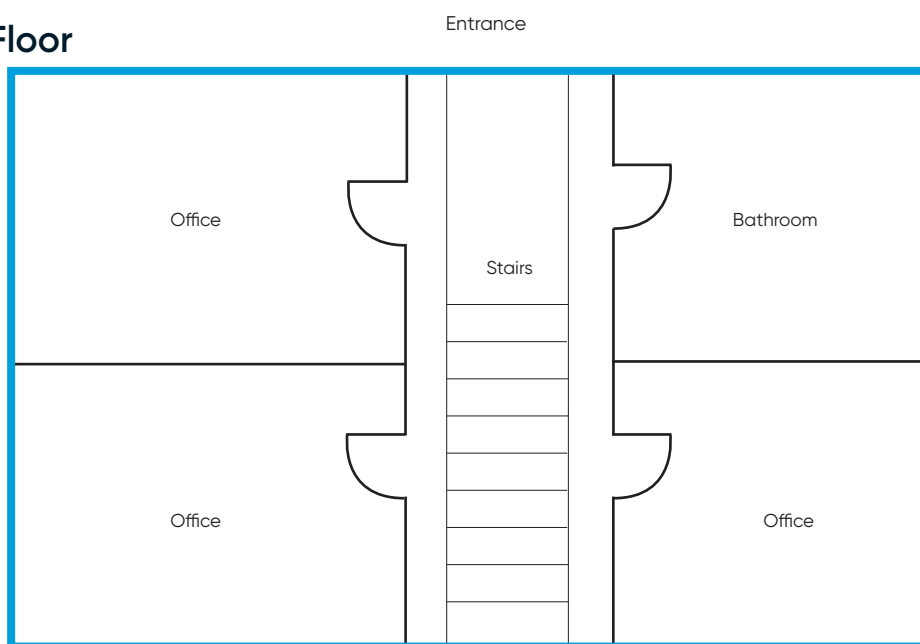


Floor Plan

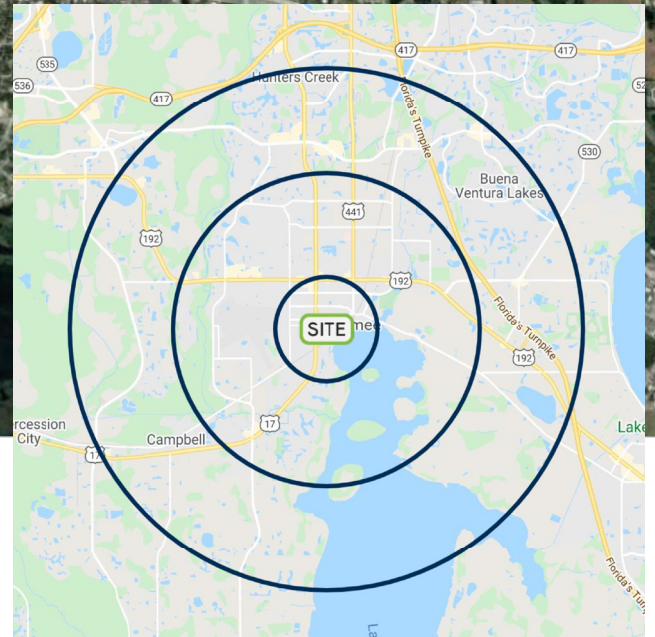
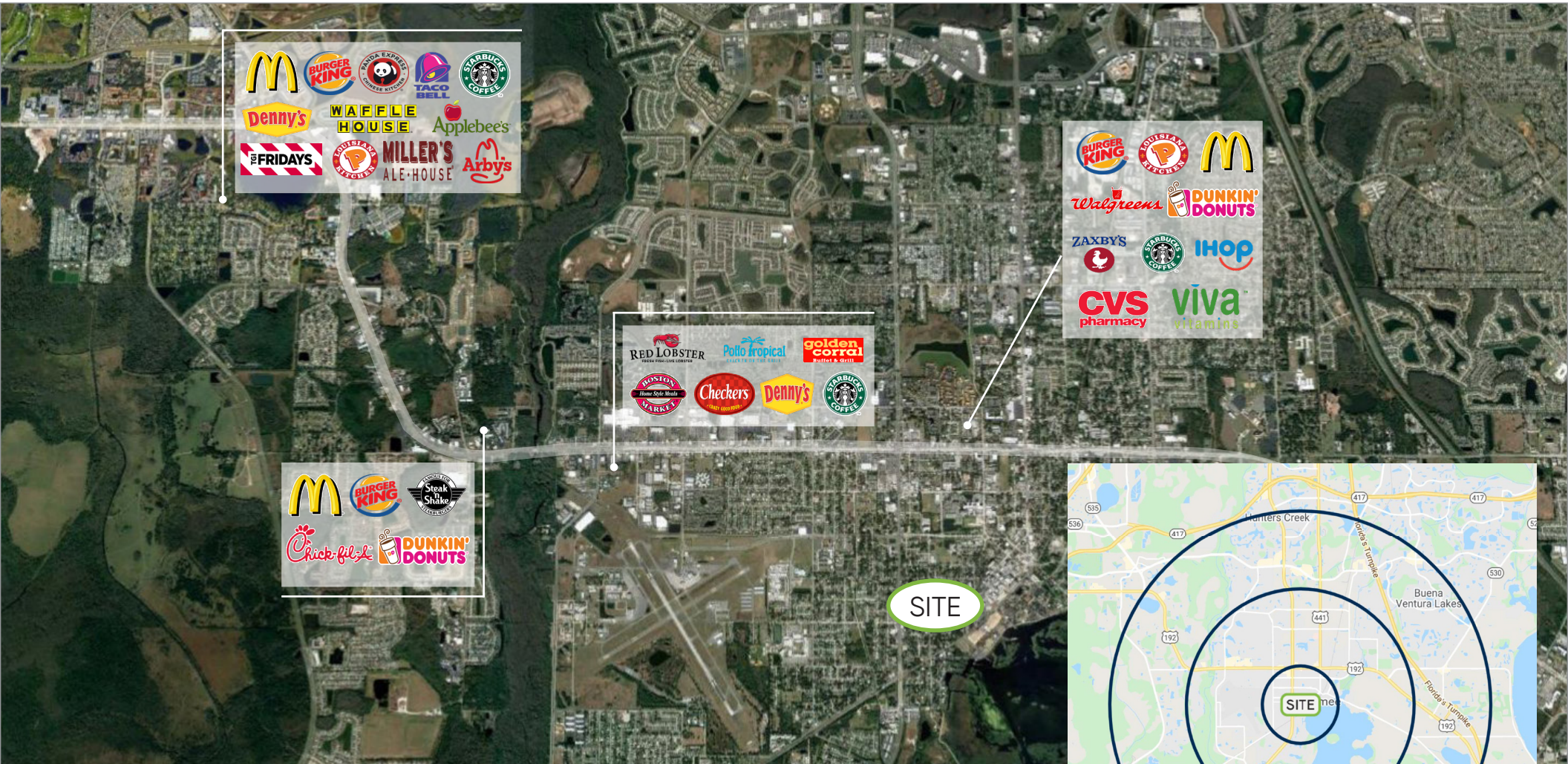
1st Floor



2nd Floor



Location Aerial & Demographics



Radius	Population	HH Income	Businesses	Employees
1-Mile	6,460	\$40,066	1,520	11,138
3-Mile	66,943	\$51,421	5,037	32,891
5-Mile	174,191	\$55,842	9,742	57,524

