



**Bishop Beale Duncan**  
COMMERCIAL REAL ESTATE

2901 Corrine Dr  
Orlando, FL 32803

**NEW RENOVATION OPPORTUNITY IN PRIME LOCATION**

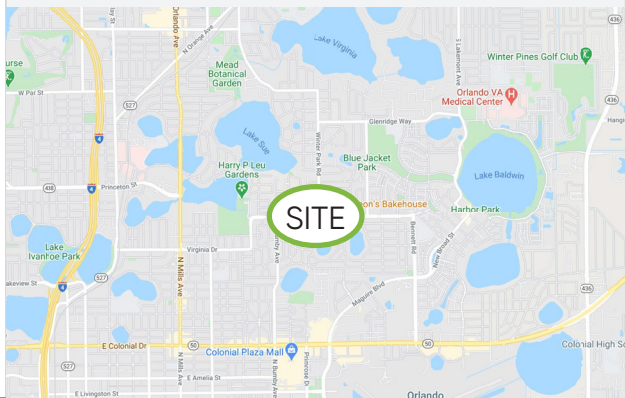


## FOR SALE

- + Sale Price: \$599,000
- + Building Size: 1,955 SF
- + Land Size: 9,375 SF
- + Year Built: 1949
- + Zoning: C-1

## Highlights

- Corner Lot located on highly desirable Corrine Dr.
- Building is in need of total renovation
- Ideal Retail Site in Prime Location



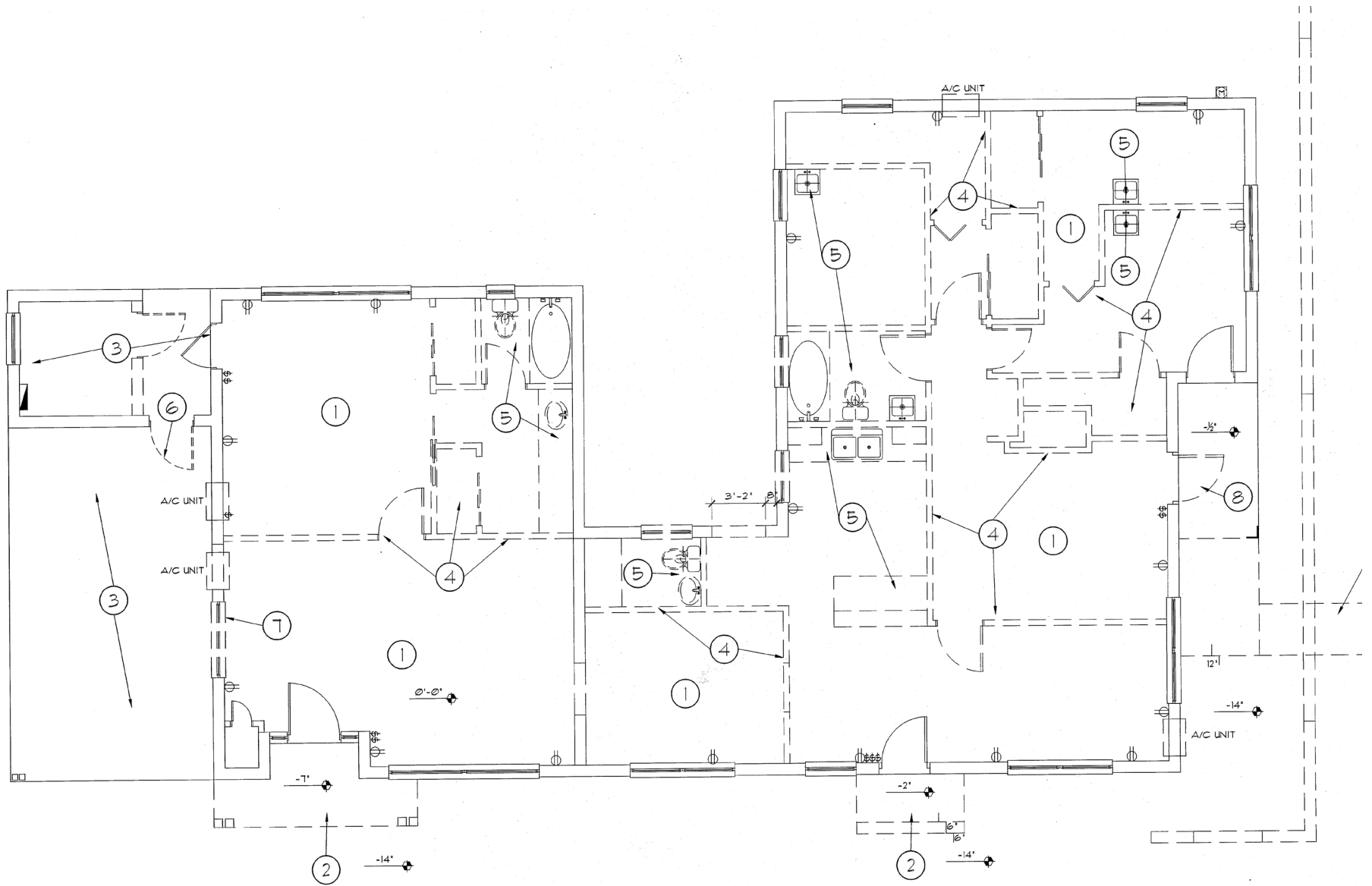
**PATRICK GOETZ**  
Vice President  
(407) 734.7210  
Pat@BBDRE.com

This offer is subject to errors, omissions, prior sale or withdrawal without notice.

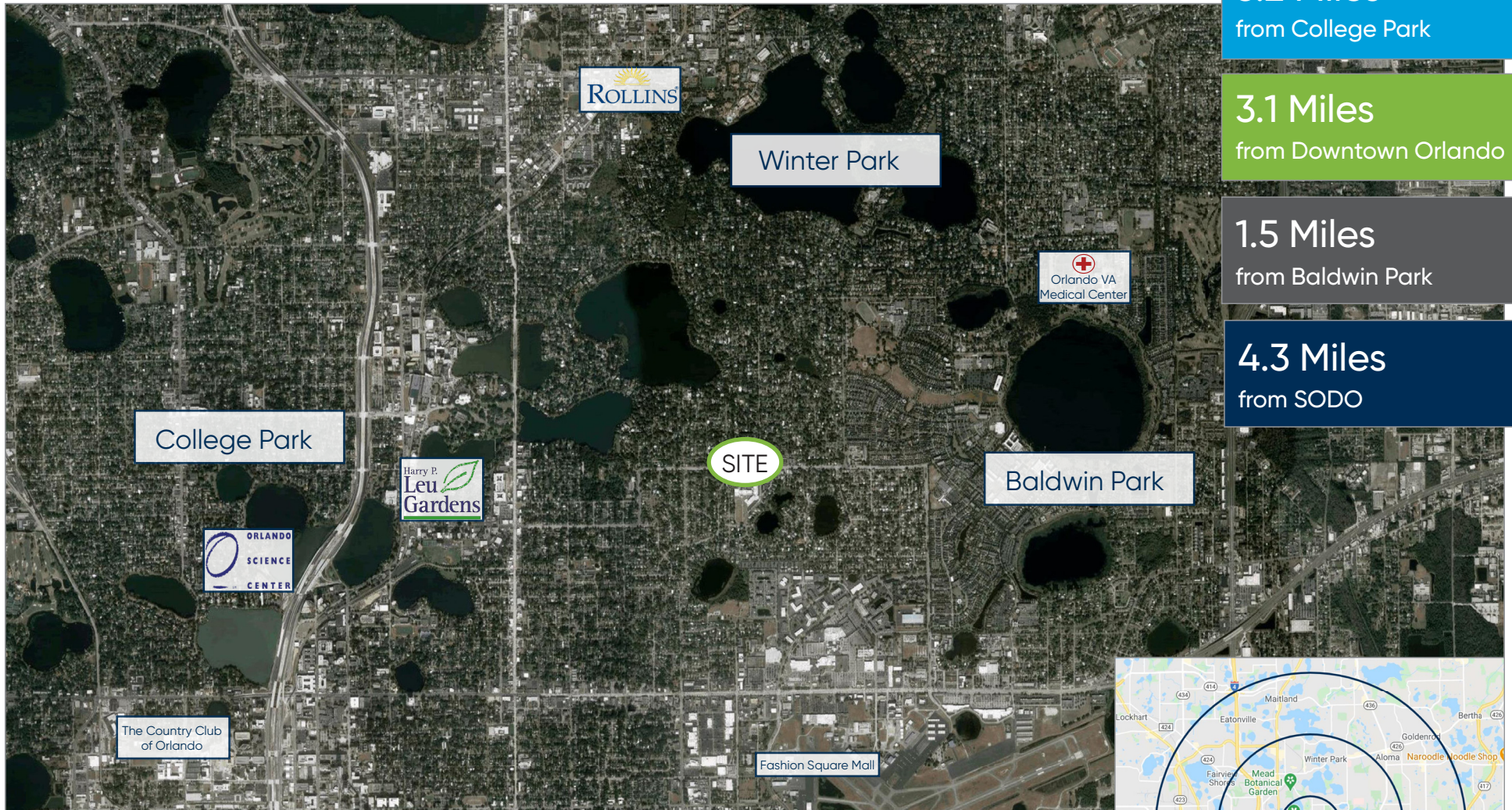


**BISHOP BEALE DUNCAN**  
250 N. Orange Ave., Ste. 1500  
Orlando, FL 32801 + (407) 426.7702  
[www.BBDRE.com](http://www.BBDRE.com)

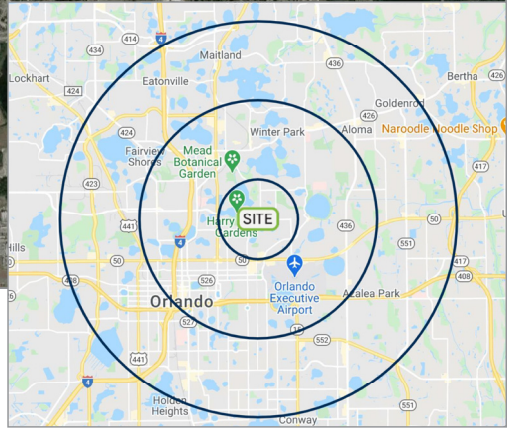
# Site Plan



# Location Aerial & Demographics



Radius	Population	HH Income	Businesses	Employees
1-Mile	11,055	\$118,124	882	6,712
3-Mile	103,030	\$108,490	15,599	123,136
5-Mile	285,949	\$87,417	28,816	232,744



# Location Aerial & Demographics

