



Bishop Beale Duncan
COMMERCIAL REAL ESTATE

828 Mercy Drive, Suites 2 & 3
Orlando, Florida 32808

MOVE-IN READY ORLANDO MEDICAL OFFICE



SUB-LEASE

- + Lease Rate: \$24/SF (FS)
- + Available SF: 2,244 SF
- + Building Size: 59,198 SF
- + Primary Use: Medical
- + Parking: 5.07 / 1,000

Highlights

- Recently Renovated in 2016
- The Property is Equipped with a Central Security Monitoring System Inside and Outside
- Perimeter and Parking Lot Lighting with Security on the Walkways
- 3 Exam Rooms
- All Exam Rooms Have Plumbing



JONATHAN CLAYTON
Director
(407) 734.7212
Jonathan@BBDRE.com

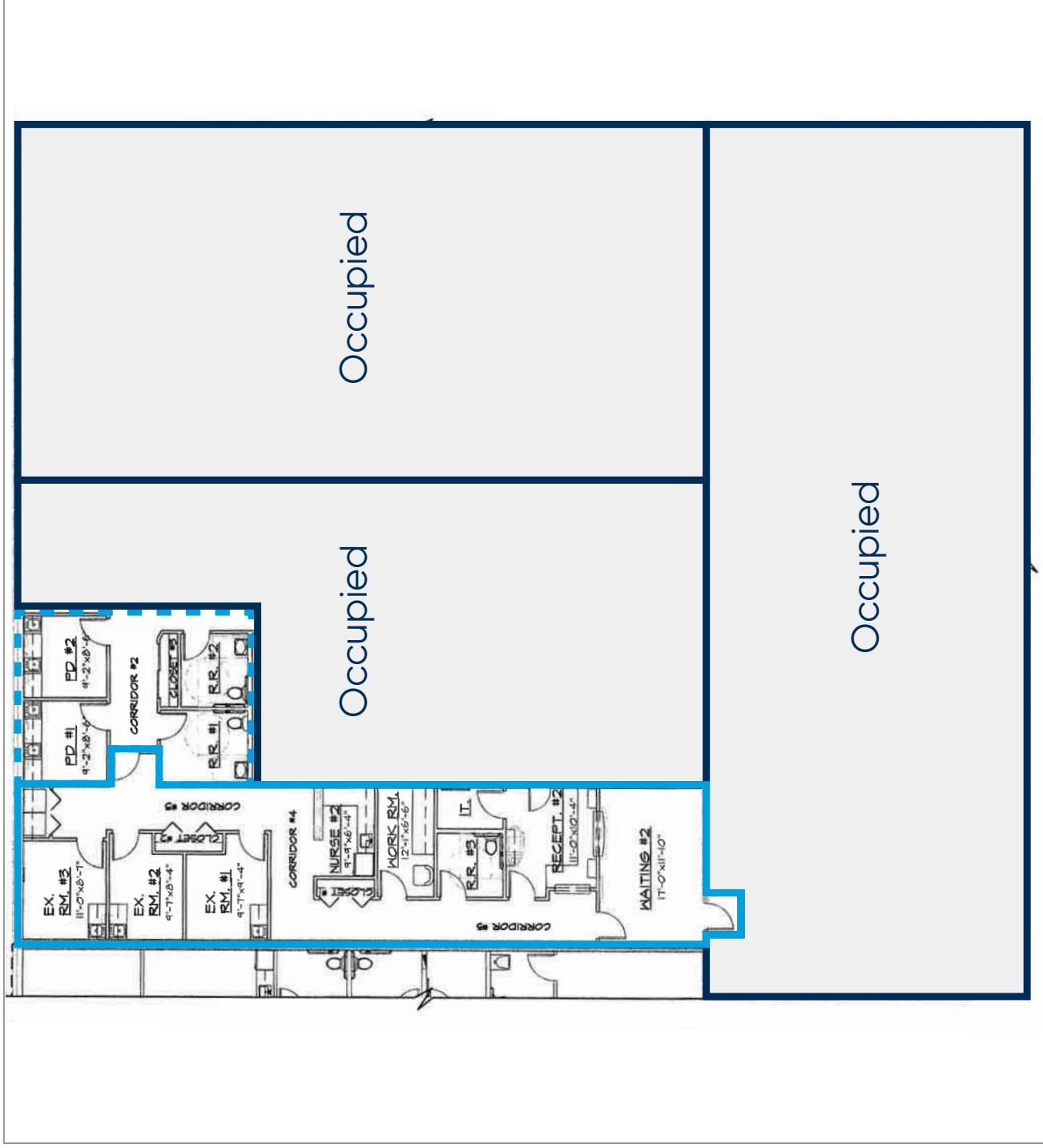
RUSSELL MAYS
Associate
(407) 734.7209
Russell@BBDRE.com



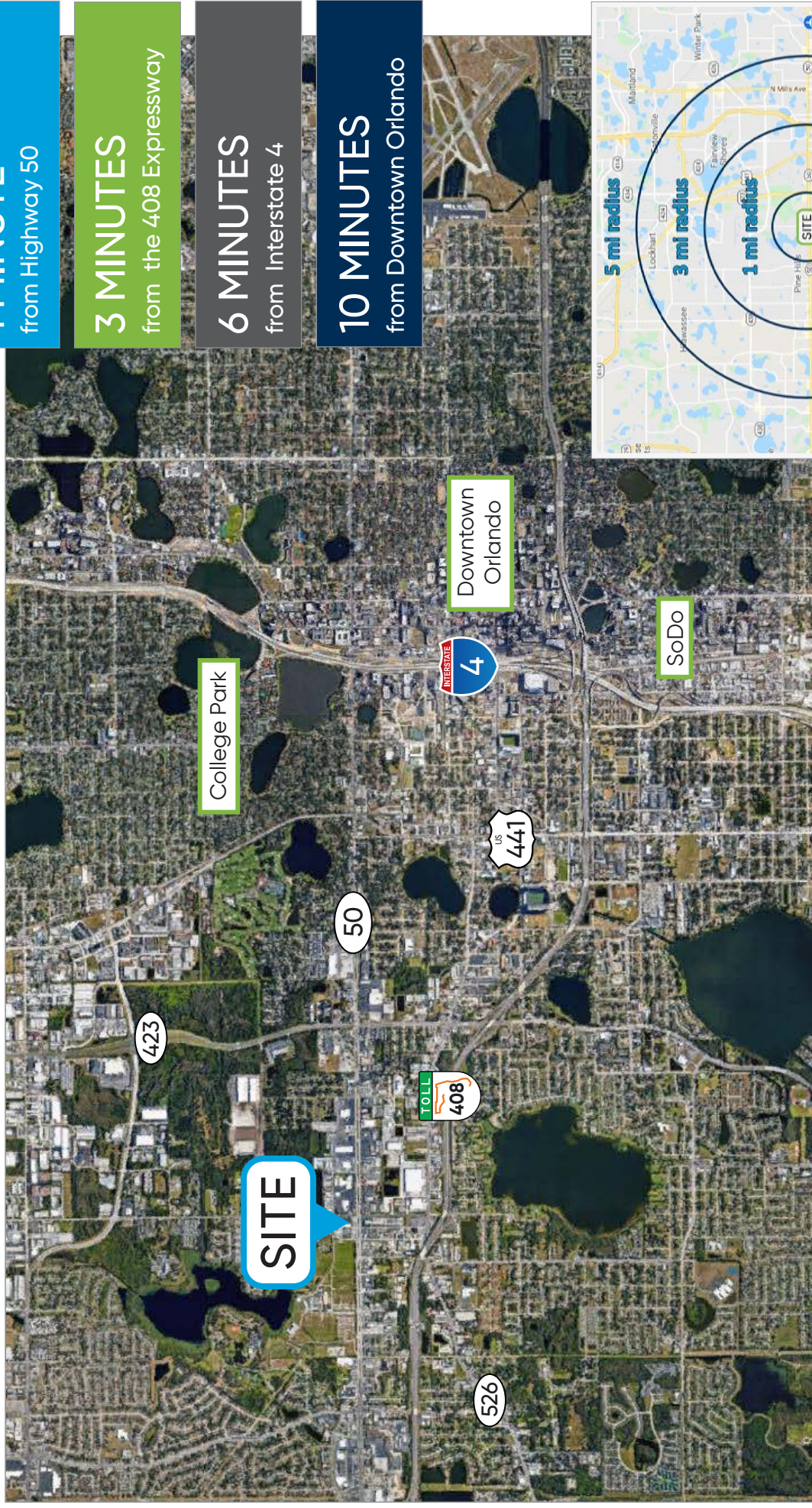
BISHOP BEALE DUNCAN
250 N. Orange Ave., Ste. 1500
Orlando, FL 32801 + (407) 426.7702

www.BBDRE.com

Floor Plan & Images



Location Aerial



Radius	Population	HH Income	Businesses	Employees
1-Mile	7,146	\$43,393	625	5,278
3-Mile	101,604	\$58,121	5,824	50,844
5-Mile	326,881	\$67,536	24,611	261,708

1 MINUTE
from Highway 50

3 MINUTES
from the 408 Expressway

6 MINUTES
from Interstate 4

10 MINUTES
from Downtown Orlando

