



Bishop Beale Duncan
COMMERCIAL REAL ESTATE

587 East State Road 434, Suite 1011
Longwood, Florida 32750

MOVE-IN READY LONGWOOD MEDICAL OFFICE



SUB-LEASE

- + Lease Rate: \$23 / SF (FS)
- + Available SF: 2,476 SF
- + Building Size: 75,720 SF
- + Primary Use: Medical



Highlights

- Located in the Heart of Longwood with Close Proximity to the South Seminole Hospital
- Common Areas Recently Updated in 2020/2021
- Directly Off State Road 434
- 5 Exam Rooms
- All Exam Rooms Have Plumbing
- 2 Large Offices
- Ample Parking
- 26,500 AADT on State Road 434

JONATHAN CLAYTON
Associate
(407) 734.7212
Jonathan@BBDRE.com

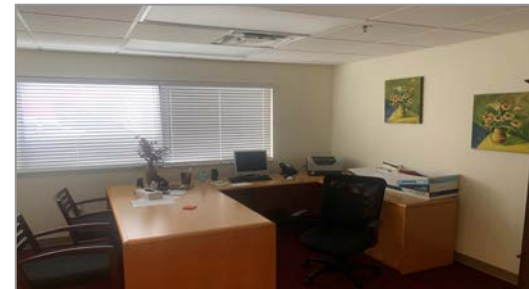
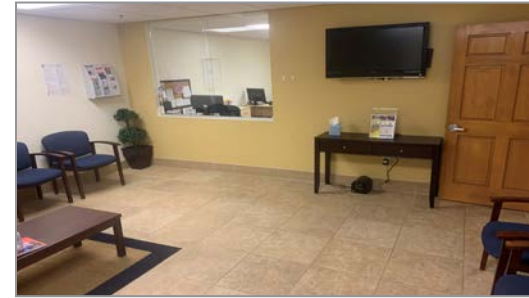
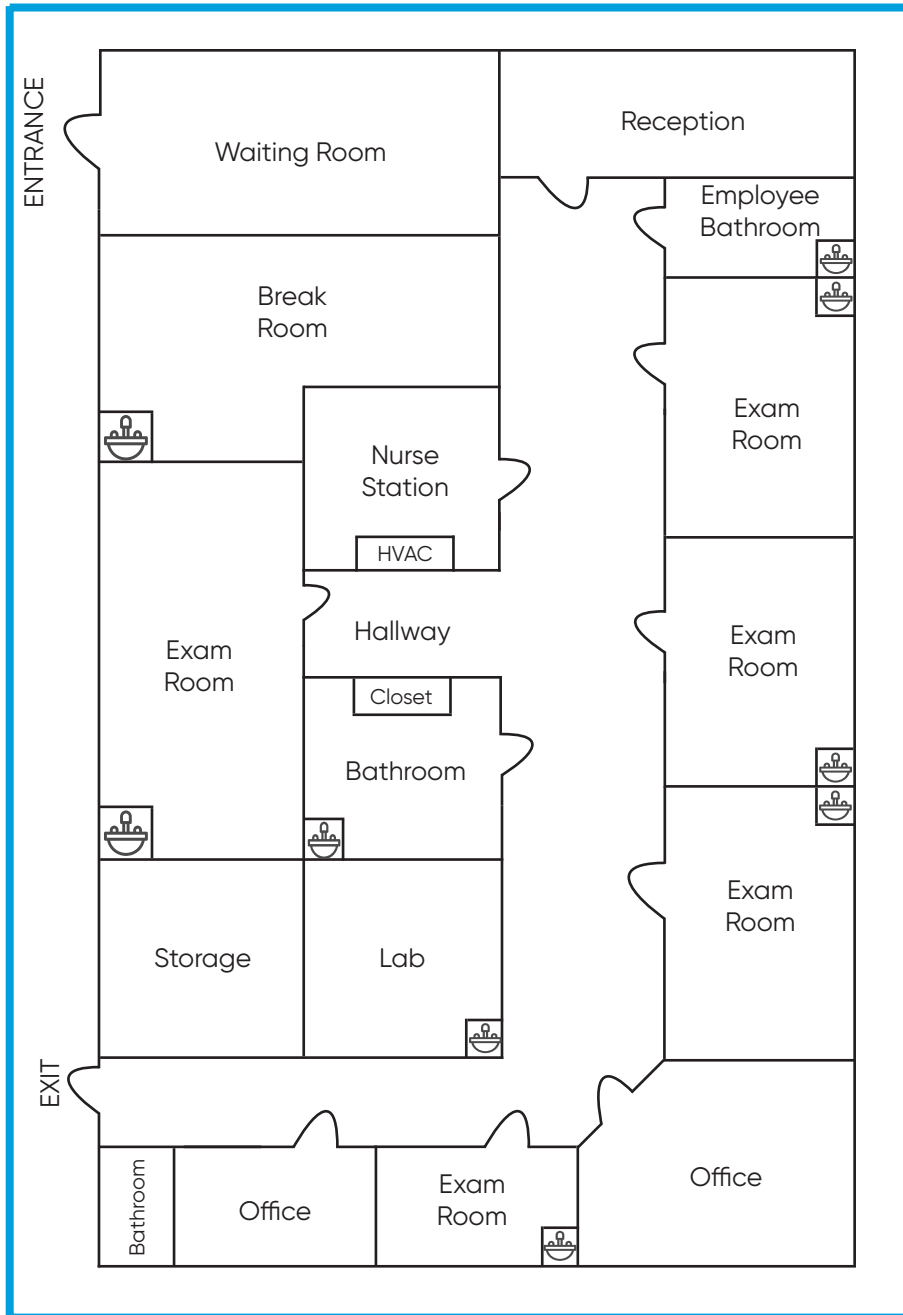
RUSSELL MAYS
Associate
(407) 734.7209
Russell@BBDRE.com



BISHOP BEALE DUNCAN
250 N. Orange Ave., Ste. 1500
Orlando, FL 32801 + (407) 426.7702
www.BBDRE.com

This offer is subject to errors, omissions, prior sale or withdrawal without notice.

Floor Plan & Images



Merchant Map

