



Bishop Beale Duncan
COMMERCIAL REAL ESTATE

1975 South John Young Parkway
Kissimmee, Florida 34741

MOVE-IN READY KISSIMMEE MEDICAL OFFICE



SUB-LEASE

- + Lease Rate: \$5,250 / Month FS
- + Available SF: 2,800 SF
- + Building Size: 20,600 SF
- + Primary Use: Medical
- + Parking: 3.31 / 1,000



Highlights

- Located with Easy Access just off John Young Parkway
- 83,000 AADT on South John Young Parkway
- Over 300 Feet Linear Frontage with Excellent Visibility on John Young Parkway
- 7 Exam Rooms Available
- All Exam Rooms Have Plumbing
- Ample Parking
- Built in 2008
- **Days Open for Leasing: Monday, Tuesday, Wednesday, Friday, Saturday and Sunday**

JONATHAN CLAYTON
Associate
(407) 734.7212
Jonathan@BBDRE.com

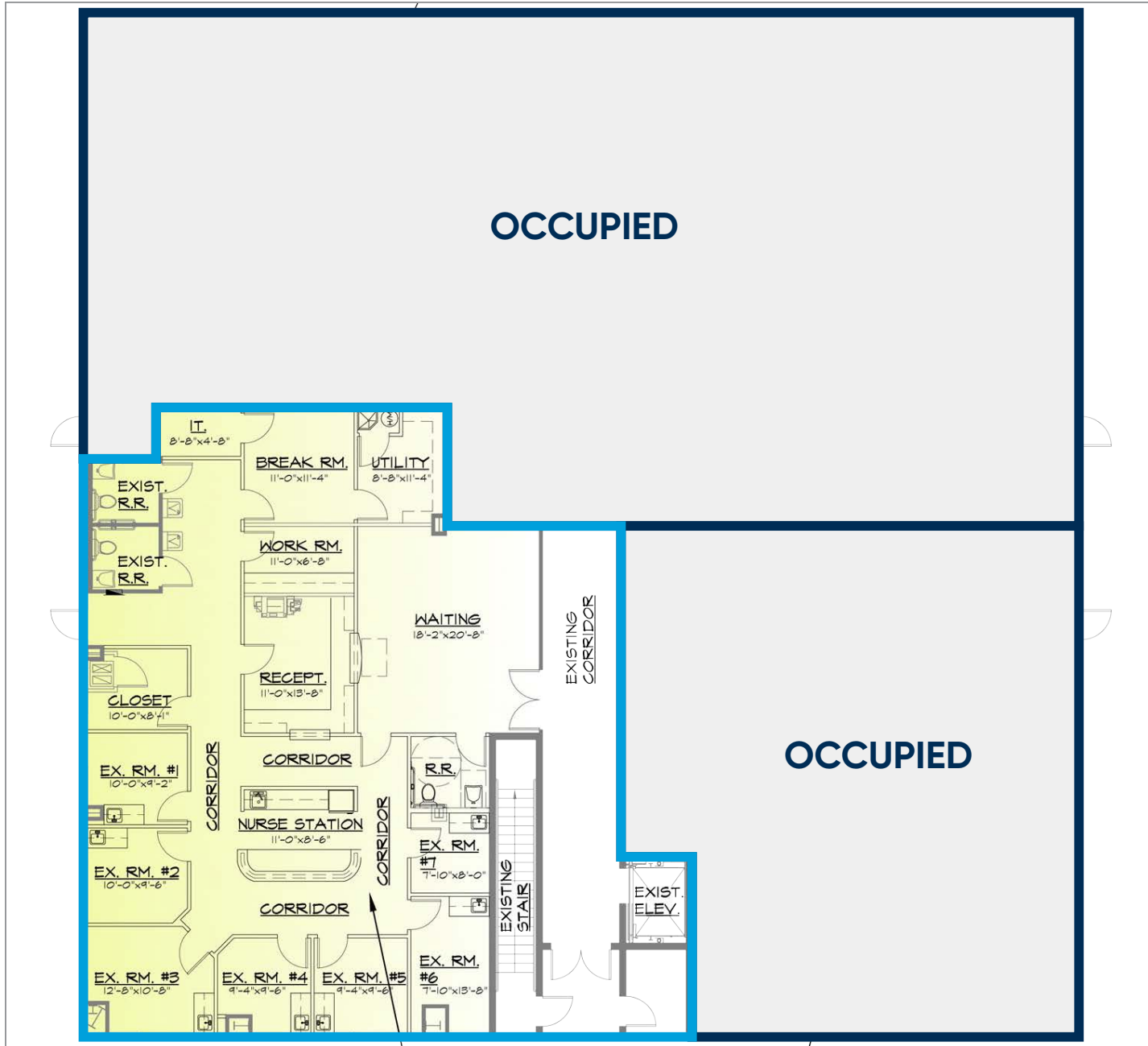
RUSSELL MAYS
Associate
(407) 734.7209
Russell@BBDRE.com



BISHOP BEALE DUNCAN
250 N. Orange Ave., Ste. 1500
Orlando, FL 32801 + (407) 426.7702
www.BBDRE.com

This offer is subject to errors, omissions, prior sale or withdrawal without notice.

Floor Plan & Images



Location Aerial



2.4 MILES
from U.S. Highway 192

12.3 MILES
from Interstate 4

3.2 MILES
from U.S. Highway 441

Radius	Population	HH Income	Businesses	Employees
1-Mile	5,258	\$62,037	213	1,085
3-Mile	51,707	\$48,892	3,804	24,971
5-Mile	139,778	\$52,642	6,359	44,741

