



**Bishop Beale Duncan**  
COMMERCIAL REAL ESTATE

715 West Harvard Street  
Orlando, Florida 32804

## COLLEGE PARK PROFESSIONAL OFFICE SPACE



## FOR LEASE

- + **Lease Rate:** \$2,900/Month MG
- + **Available SF:** 1,065 SF
- + **Land Size:** 6,783 SF
- + **Signage:** Building
- + **Parking:** 4 Spaces + Street

## Highlights

- Located in the Heart of Desirable College Park
- 5 Minutes from Downtown Orlando
- Under 2 Miles from Interstate 4 and Highway 50
- Open Floor Plan with Conference Room
- Minutes from College Park's Local & National Retail & Restaurants
- Ample Natural Lighting



### PATRICK GOETZ

Vice President  
(407) 734.7210  
Pat@BBDRE.com

This offer is subject to errors, omissions, prior sale or withdrawal without notice.

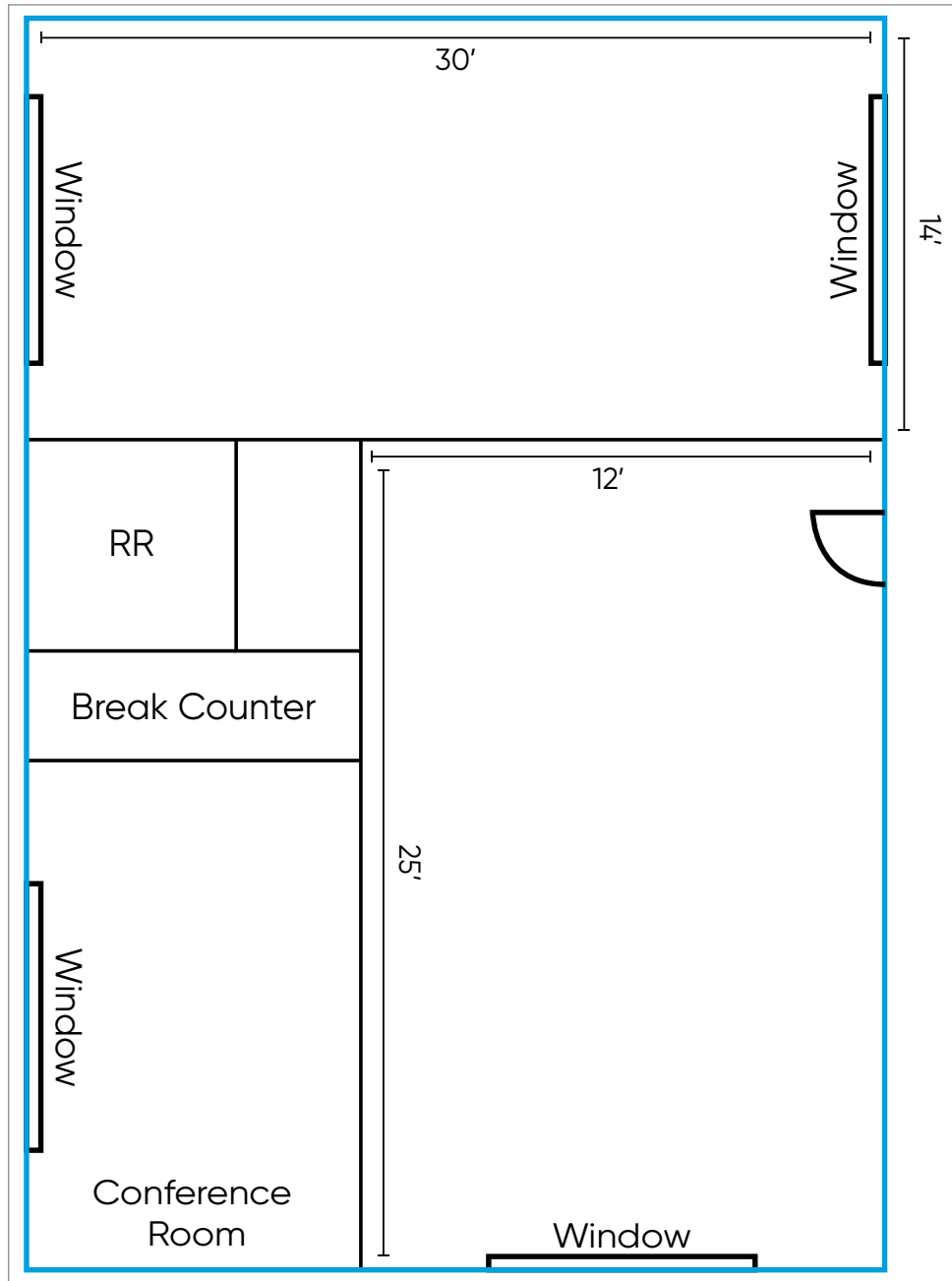


### BISHOP BEALE DUNCAN

250 N. Orange Ave., Ste. 1500  
Orlando, FL 32801 + (407) 426.7702

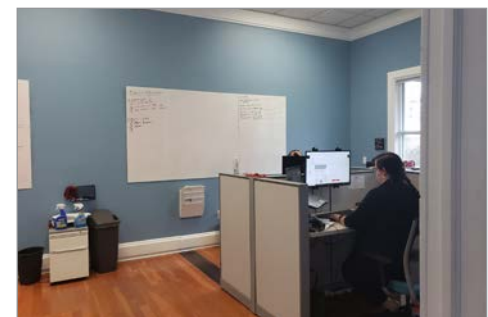
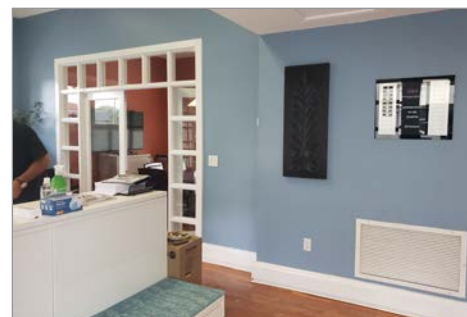
[www.BBDRE.com](http://www.BBDRE.com)

# Floor Plan & Images



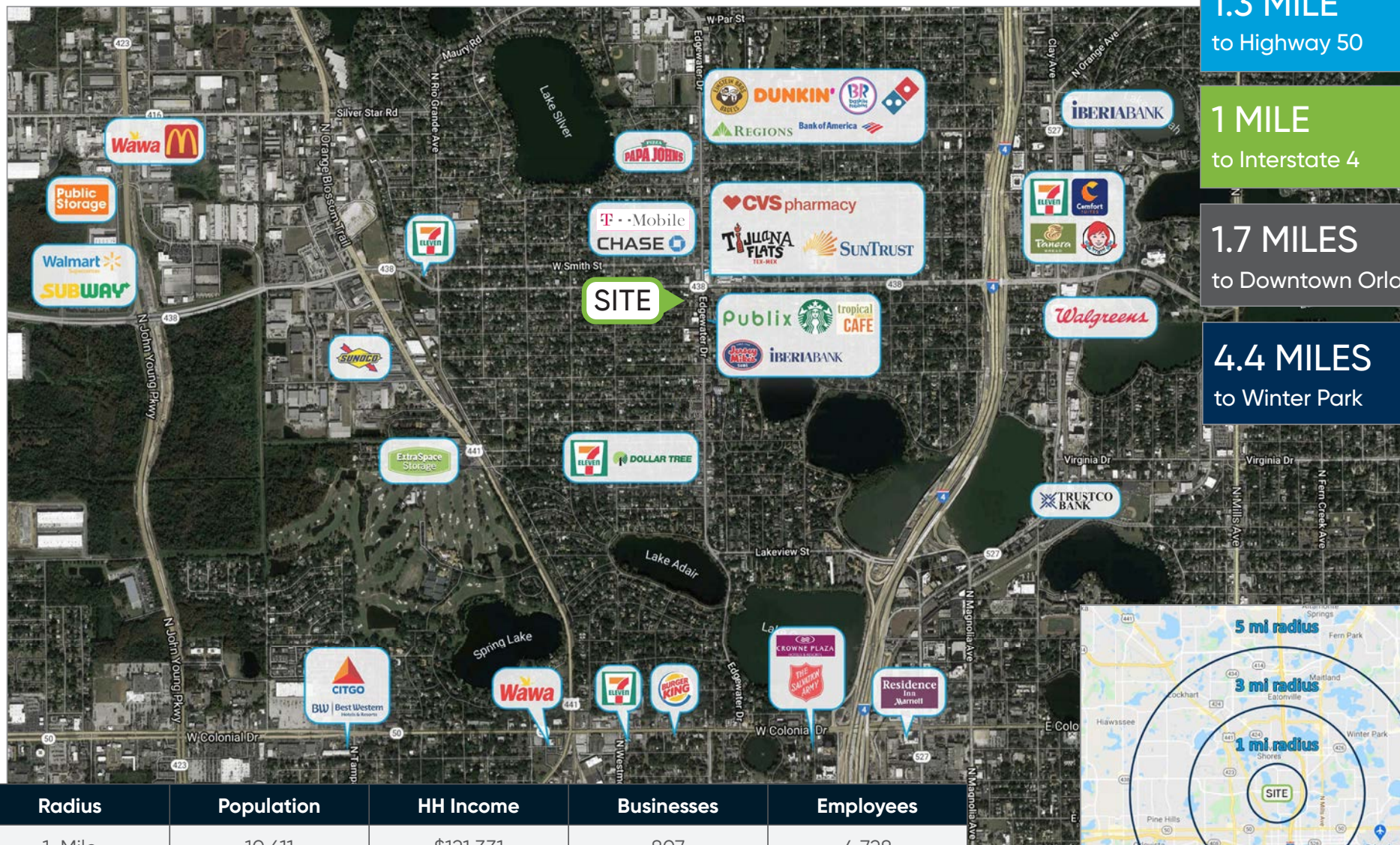
## AMENITIES

- 1,065 SF
- Conference Room
- Open Work Area
- Break Counter with Small Fridge, Coffee Maker & Microwave
- Ample Natural Lighting





# Location Aerial & Demographics

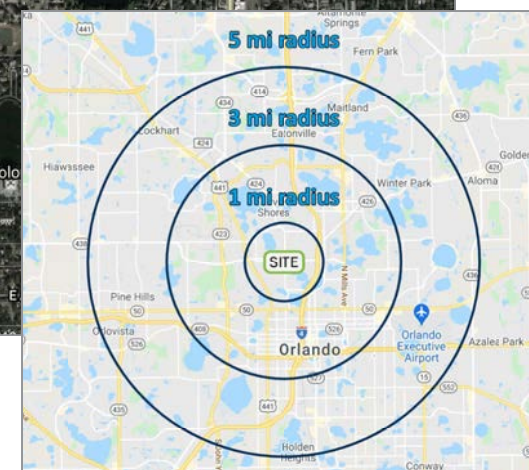


1.3 MILE  
to Highway 50

1 MILE  
to Interstate 4

1.7 MILES  
to Downtown Orlando

4.4 MILES  
to Winter Park



Radius	Population	HH Income	Businesses	Employees
1-Mile	10,611	\$121,331	807	4,728
3-Mile	87,840	\$86,604	15,492	161,030
5-Mile	283,530	\$84,494	28,235	293,584





# Local & National Retail Snapshot

