



Bishop Beale Duncan  
COMMERCIAL REAL ESTATE

1495 Maitland Avenue  
Maitland, Florida 32751

**SPACIOUS OFFICE BUILDING NEAR I-4**

[CLICK HERE FOR PROPERTY VIDEO](#)



## FOR SALE

- + Sale Price: \$799,000
- + Building Size: 6,061 SF
- + Land Size: 26,571 SF
- + Zoning: Residential Prof. Office
- + Signage: Building



## Highlights

- Desirable Location Near Interstate 4, SunRail Station and AdventHealth
- Amenities Include 2 Reception Areas, 2 Executive Offices with Fireplaces, Large & Small Conference Rooms, 4 Bathrooms, 2 Kitchens and 17 Private Offices with Windows Throughout
- Renovated in 2001 - Custom Treatments Throughout
- Partially Furnished
- Potential for Dual-Occupancy
- 30 Parking Spaces
- **Click Here For A Video of the Property**

### PATRICK GOETZ

Vice President  
(407) 734.7210  
Pat@BBDRE.com

This offer is subject to errors, omissions, prior sale or withdrawal without notice.

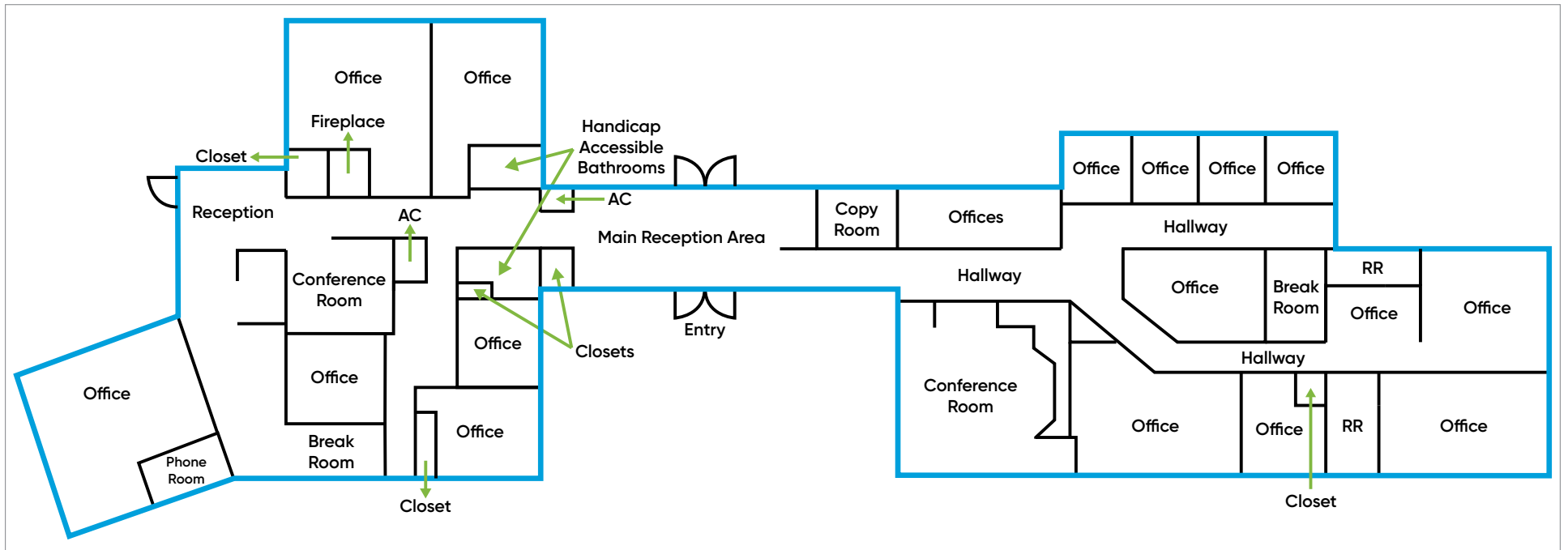


### BISHOP BEALE DUNCAN

250 N. Orange Ave., Ste. 1500  
Orlando, FL 32801 + (407) 426.7702

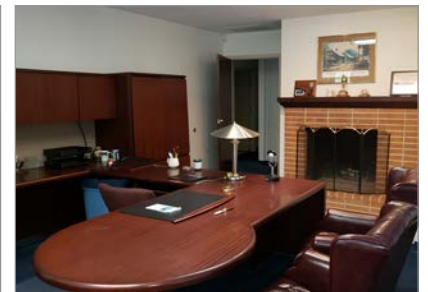
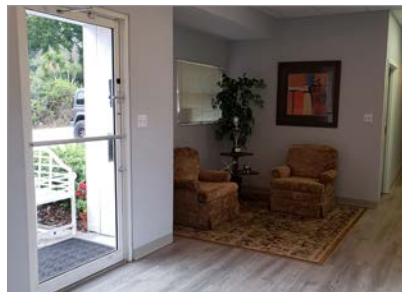
[www.BBDRE.com](http://www.BBDRE.com)

# Floor Plan & Images



## AMENITIES

- 6,061 SF
- 17 Private Offices
- 32 Desks
- Ample Windows & Natural Lighting
- 2 Reception Areas
- 2 Executive Offices with Fireplaces
- Large Conference Room
- Small Conference Room
- 4 Bathrooms - 2 Handicap Accessible
- 2 Kitchens/Break Areas
- Partially Furnished
- 30 Parking Spaces





# Location Aerial & Demographics

