



**Bishop Beale Duncan**  
COMMERCIAL REAL ESTATE

1390 Hope Road, Suite 400  
Maitland, Florida 32751

**MOVE-IN READY OFFICE SPACE NEAR I-4**



## FOR LEASE

- + Lease Rates: \$22.00 / SF MG
- + Available SF: 2,424 SF
- + Building Size: 9,396 SF
- + Signage: Monument & Building
- + Parking: 42 Spaces

## Highlights

- Great Location Just Off Interstate 4 and Maitland Boulevard in Maitland Center
- Maitland Center is one of Orlando's Largest Office Markets
- Amenities Include 5 Large Private Offices, Break Room, Conference Room, Large Open Work Areas, Reception Area and 2 Restrooms
- Excellent Move-in Condition
- Class B Professional Office Space
- Parcel ID: 26-21-29-3650-00-010
- Zoning: PO-2



**PATRICK GOETZ**  
Vice President  
(407) 734.7210  
Pat@BBDRE.com

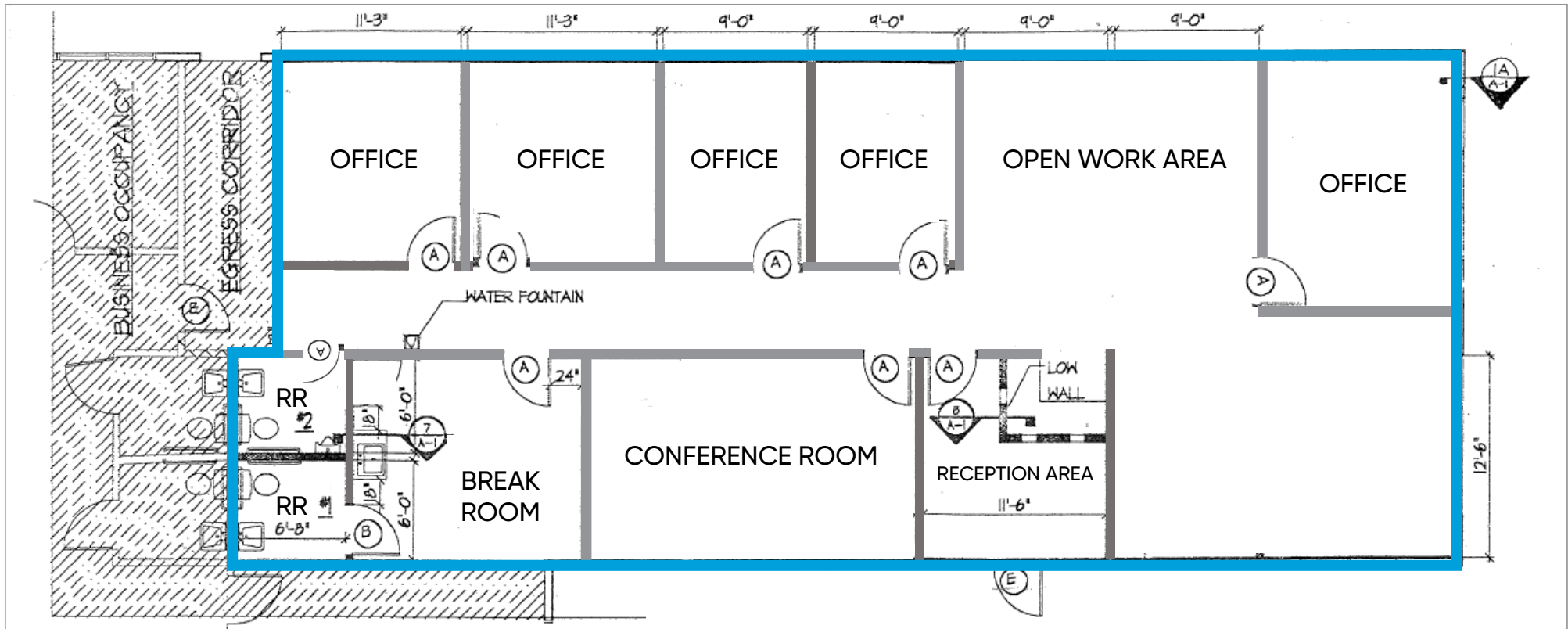
**MICHAEL F. BEALE, CCIM**  
Principal  
(407) 734.7208  
Mike@BBDRE.com



**BISHOP BEALE DUNCAN**  
250 N. Orange Ave., Ste. 1500  
Orlando, FL 32801 + (407) 426.7702  
[www.BBDRE.com](http://www.BBDRE.com)

This offer is subject to errors, omissions, prior sale or withdrawal without notice.

# Floor Plan & Images



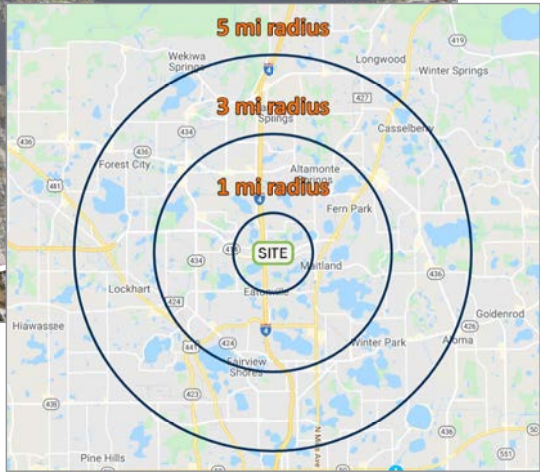
## AMENITIES

- 2,424 SF
- 5 Large Private Offices
- Break Room
- Conference Room
- Open Work Area
- Reception Area
- 2 Restrooms



# Location Aerial & Demographics

Maitland Center is Orlando's largest office market outside of Downtown Orlando and tourist areas. It contains 8,351,029 SF of office space and over 24,000 daytime employees.



Radius	Population	HH Income	Businesses	Employees
1-Mile	6,619	\$102,134	1,156	12,090
3-Mile	95,722	\$80,721	9,043	81,975
5-Mile	249,271	\$85,247	20,228	190,523

