



Bishop Beale Duncan
COMMERCIAL REAL ESTATE

Pine Tree Drive
St. Cloud, Florida 34772

DEVELOPABLE LAND IN ST. CLOUD



**MAX 60
RESIDENTIAL LOTS**

AVAILABLE

- + Sale Price: Negotiable
- + Land Size: 18.748 Acres
- + FLU: MDR
- + Zoning: MH2

Highlights

- Well-Located within a New Growth Area of St. Cloud Proper
- Site is Ideal for Residential or Commercial Uses
- Dimensions: 600' x 930' | 270' x 660' | 418' x 333'
- Surrounded by Existing Developments of Single & Multiple Family Dwelling Units
- Bi-furcated into 3 Separate Lots
- In Close Proximity to Community Services and Resources Including Grocery Stores, Churches & Schools
- Easy Access from U.S. Highway 192 and the Florida Turnpike



JILL ROSE
VP of Retail Services
(407) 734.7204
Jill@BBDRE.com

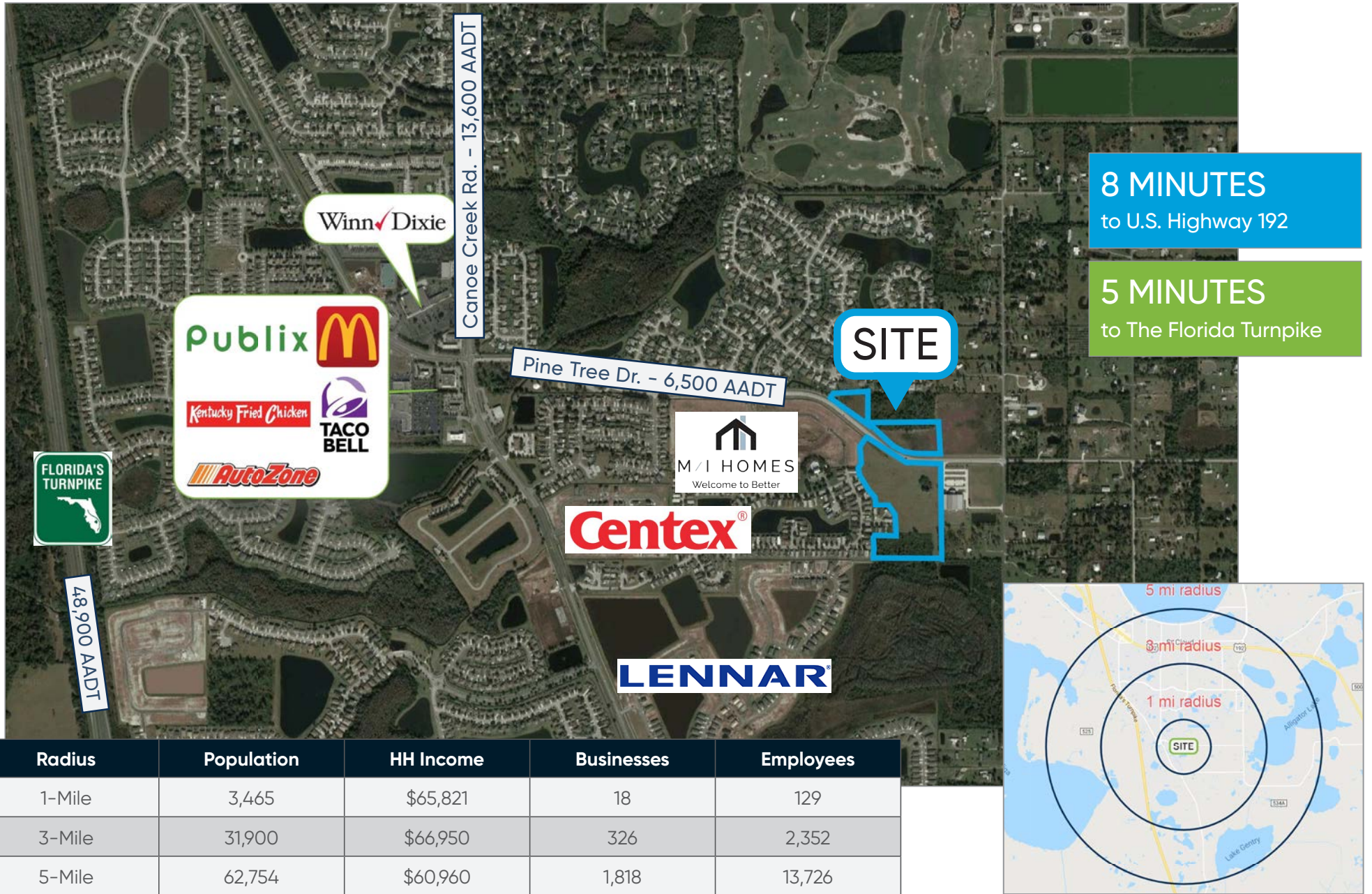
JP BEAULIEU, CCIM, CLS
Director of Retail Services
(407) 734.7201
JP@BBDRE.com



BISHOP BEALE DUNCAN
250 N. Orange Ave., Ste. 1500
Orlando, FL 32801 + (407) 426.7702
www.BBDRE.com

This offer is subject to errors, omissions, prior sale or withdrawal without notice.

Location Aerial & Demographics



NeoCity

NeoCity, under 9-miles from the site, is a 500-acre technology district inspired by an ethos of collaboration and designed to transform the way we ideate, create, and innovate.

- + 500 Acre Technology Park
- + \$28 Billion in Economic Output
- + 11 Million Total Square Feet at Build Out
- + 34,000 Jobs at Build Out
- + 109,000 SF BRIDG Sensor Facility
- + 700 Student STEM High School

