



Bishop Beale Duncan
COMMERCIAL REAL ESTATE

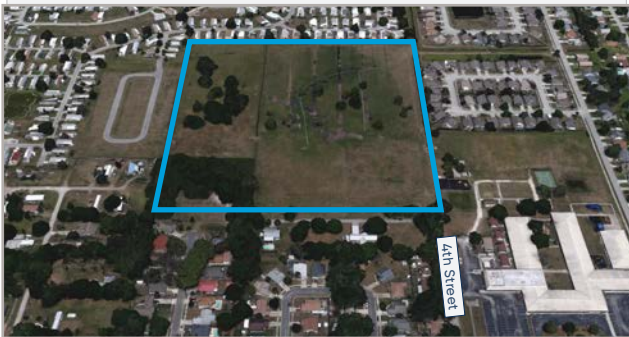
5th Street
St. Cloud, Florida 34769

RESIDENTIAL INFILL LAND FOR SALE



AVAILABLE

- + **Sale Price:** Negotiable
- + **Land Size:** 25 Acres
- + **Dimensions:** 970' x 1,107'
- + **Zoning:** P - Professional



Highlights

- Located Within an Established Residential Neighborhood in Saint Cloud Proper
- Within Walking Distance to East Lake Toho
- Adjacent to Lakeview Elementary School and O.P. Johnson Park
- Close Proximity to Shopping & Community Amenities
- Easily Accessible from U.S. Highway 192 and The Florida Turnpike
- Parcel ID: 03-26-30-0725-0001-0840
- Future Land Use: PUB

JILL ROSE
VP of Retail Services
(407) 734.7204
Jill@BBDRE.com

JP BEAULIEU, CCIM, CLS
Director of Retail Services
(407) 734.7201
JP@BBDRE.com



BISHOP BEALE DUNCAN
250 N. Orange Ave., Ste. 1500
Orlando, FL 32801 + (407) 426.7702
www.BBDRE.com

This offer is subject to errors, omissions, prior sale or withdrawal without notice.

Location Aerial & Demographics



Lake Toho

5 MINUTES
to U.S. Highway 192

10 MINUTES
to The Florida Turnpike



Radius	Population	HH Income	Businesses	Employees
1-Mile	8,756	\$52,202	559	5,659
3-Mile	44,971	\$55,489	1,569	13,228
5-Mile	88,419	\$58,571	2,612	20,334



NeoCity

NeoCity, 5-miles from the site, is a 500-acre technology district inspired by an ethos of collaboration and designed to transform the way we ideate, create, and innovate.

- + 500 Acre Technology Park
- + \$28 Billion in Economic Output
- + 11 Million Total Square Feet at Build Out
- + 34,000 Jobs at Build Out
- + 109,000 SF BRIDG Sensor Facility
- + 700 Student STEM High School

