



Bishop Beale Duncan
COMMERCIAL REAL ESTATE

4208 Daubert Street
Orlando, Florida 32803

INDUSTRIAL WAREHOUSE IN PRIME LOCATION

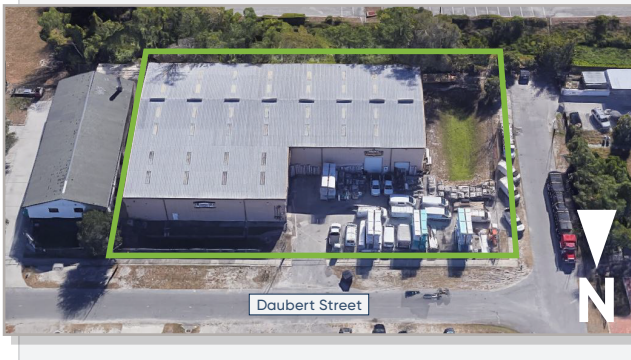


FOR SALE

- + Sale Price: \$2,500,000
- + Building Size: 19,151 SF
- + Land Size: 0.94 Acres
- + Parking: 25 Spaces
- + Zoning: C-3

Highlights

- Built-out Office & Mezzanine
- Clear Height: 24'
- Grade Level Loading: 4 Doors
- Rare Industrial Opportunity Close to Baldwin Park, Near Downtown Orlando
- Great Location Just Off Highway 50
- Walking Distance to Baldwin Park & Historic Linda's La Cantina
- Parcel ID: 20-22-30-6812-00-290



JONATHAN CLAYTON

Director
(407) 734.7212
Jonathan@BBDRE.com

This offer is subject to errors, omissions, prior sale or withdrawal without notice.



BISHOP BEALE DUNCAN

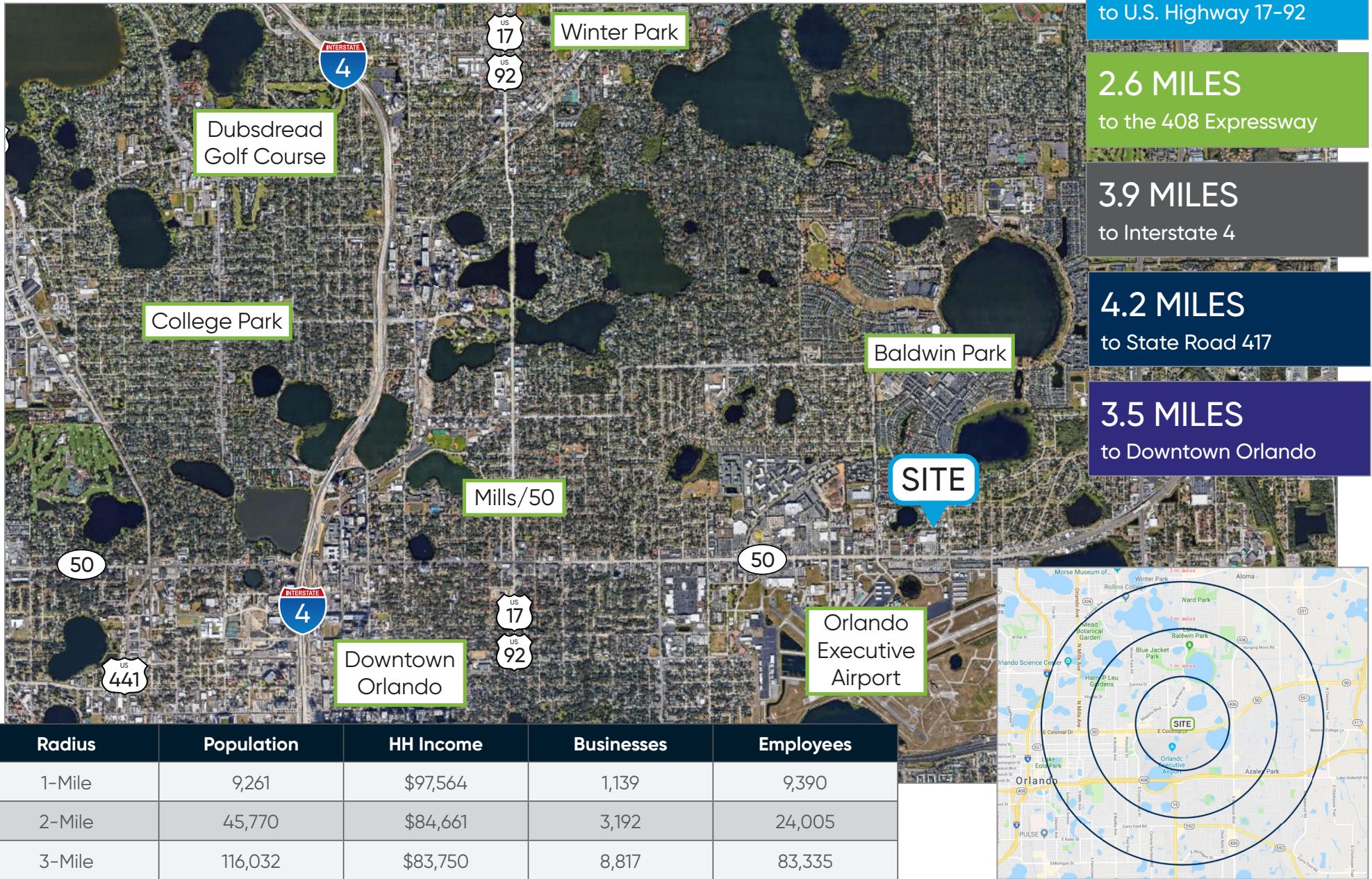
250 N. Orange Ave., Ste. 1500
Orlando, FL 32801 + (407) 426.7702

www.BBDRE.com

Property Images



Location Aerial & Demographics



Merchant Aerial

