



Bishop Beale Duncan
COMMERCIAL REAL ESTATE

60 North Court Avenue
Orlando, Florida 32801

PRIME DOWNTOWN OFFICE SPACE



FOR LEASE

- + **Lease Rate:** \$20.00 / SF FS
- + **Available SF:** 4,500 SF 2nd Floor
4,500 SF 3rd Floor
- + **Building Size:** 13,728 SF
- + **Land Size:** 5,257 SF



Highlights

- Prime Downtown Location, Just off Orange Avenue, in the Heart of the Central Business District
- Close Proximity to Washington Square and Surrounding Amenities
- Operating Retail Bank Branch in the Lobby of the First Floor
- Multiple Private Offices and Built-In Work Stations
- Structure & Surface Parking

JONATHAN CLAYTON
Vice President
(407) 734.7212
Jonathan@BBDRE.com

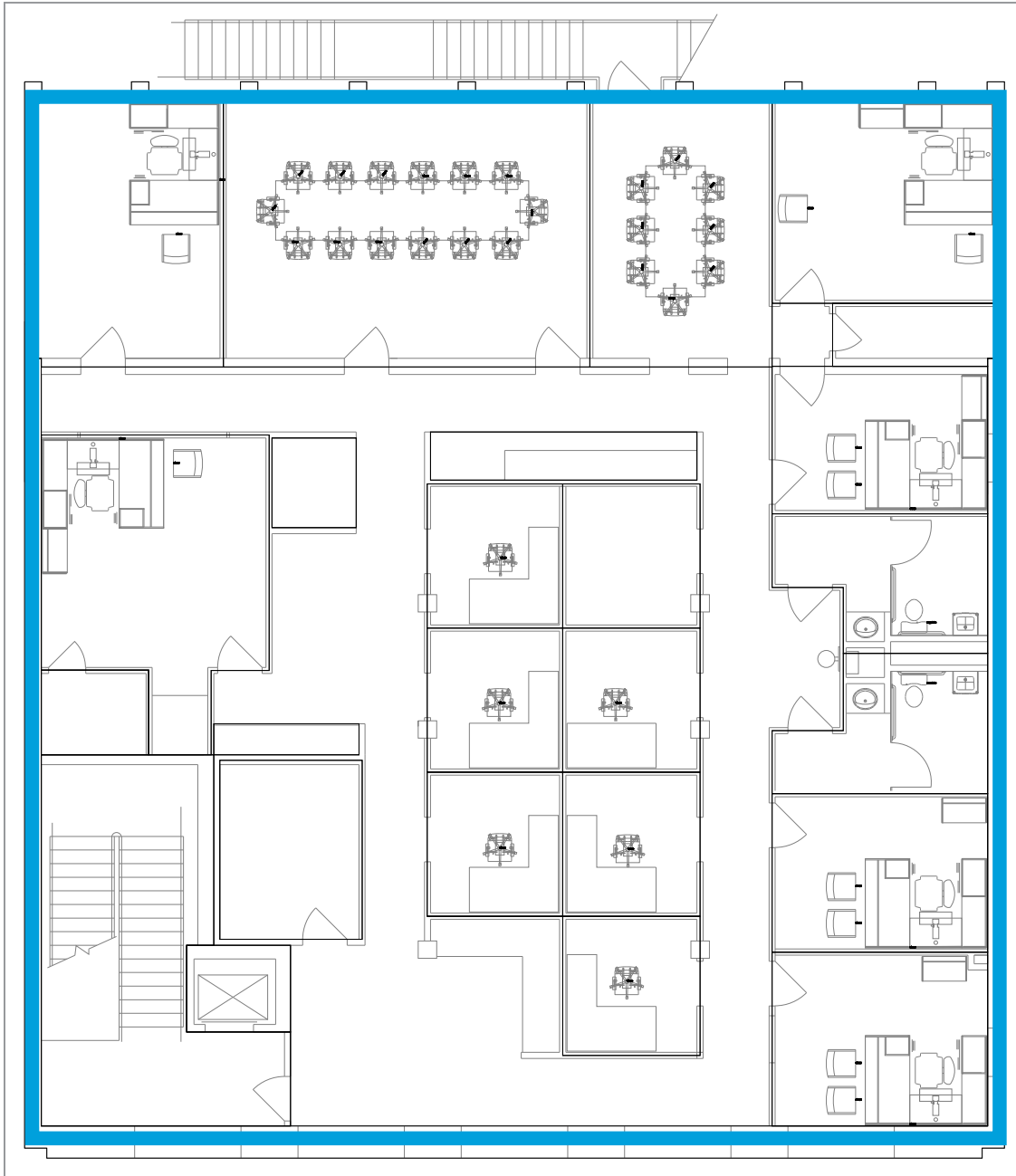
MICHAEL F. BEALE, CCIM
Principal
(407) 734.7208
Mike@BBDRE.com



BISHOP BEALE DUNCAN
250 N. Orange Ave., Ste. 1500
Orlando, FL 32801 + (407) 426.7702
www.BBDRE.com

This offer is subject to errors, omissions, prior sale or withdrawal without notice.

2nd Floor Plan

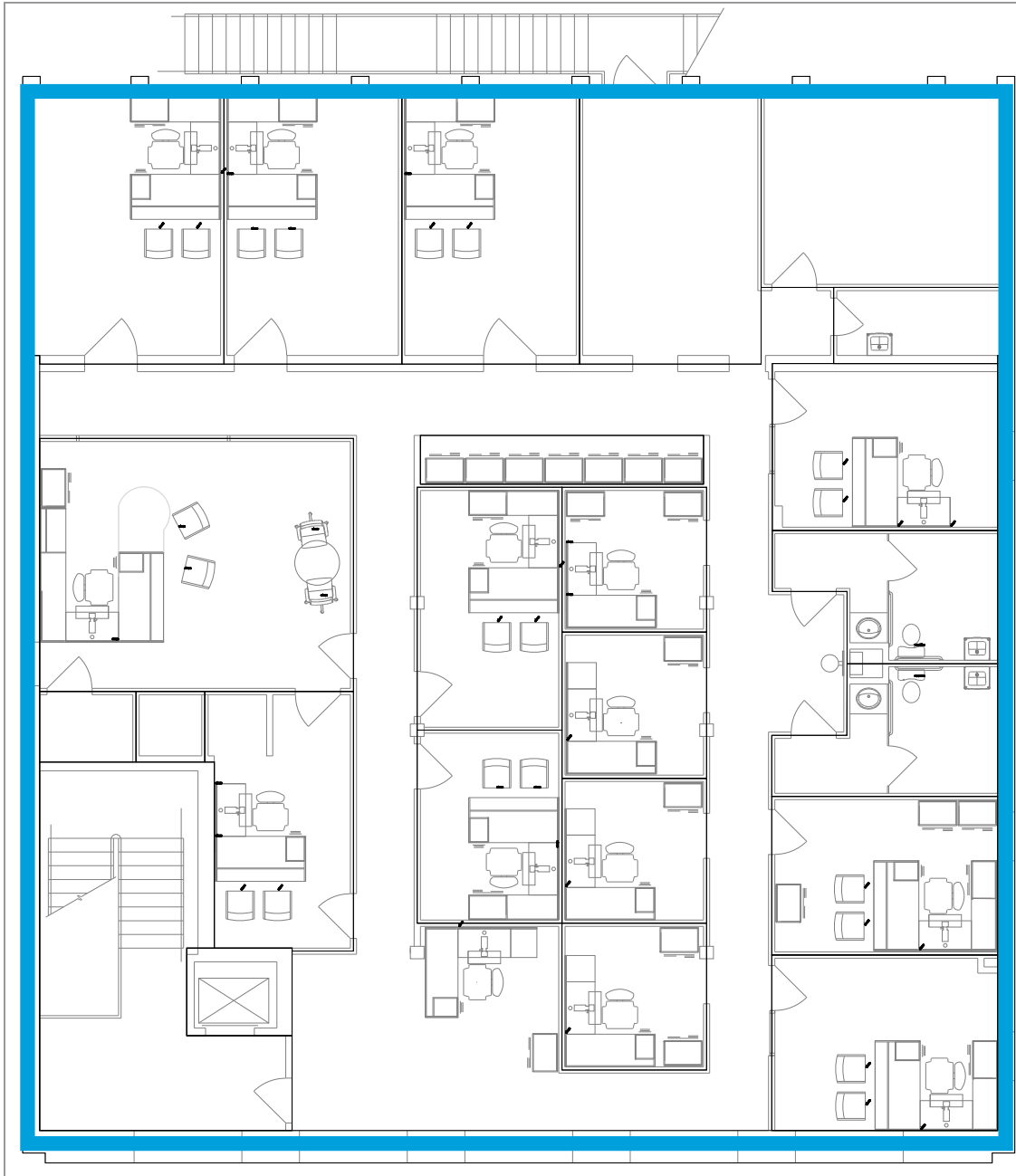


AMENITIES

- 8 Built-in Work Stations
- Large Conference Room
- Additional Small Conference Room
- Hardwood Floors
- Exposed Brick Walls

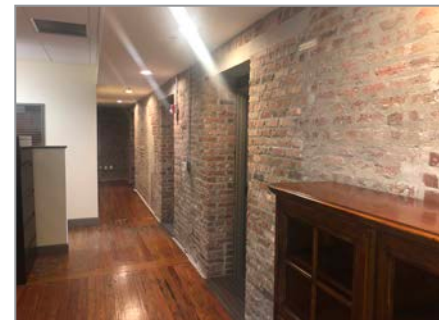


3rd Floor Plan

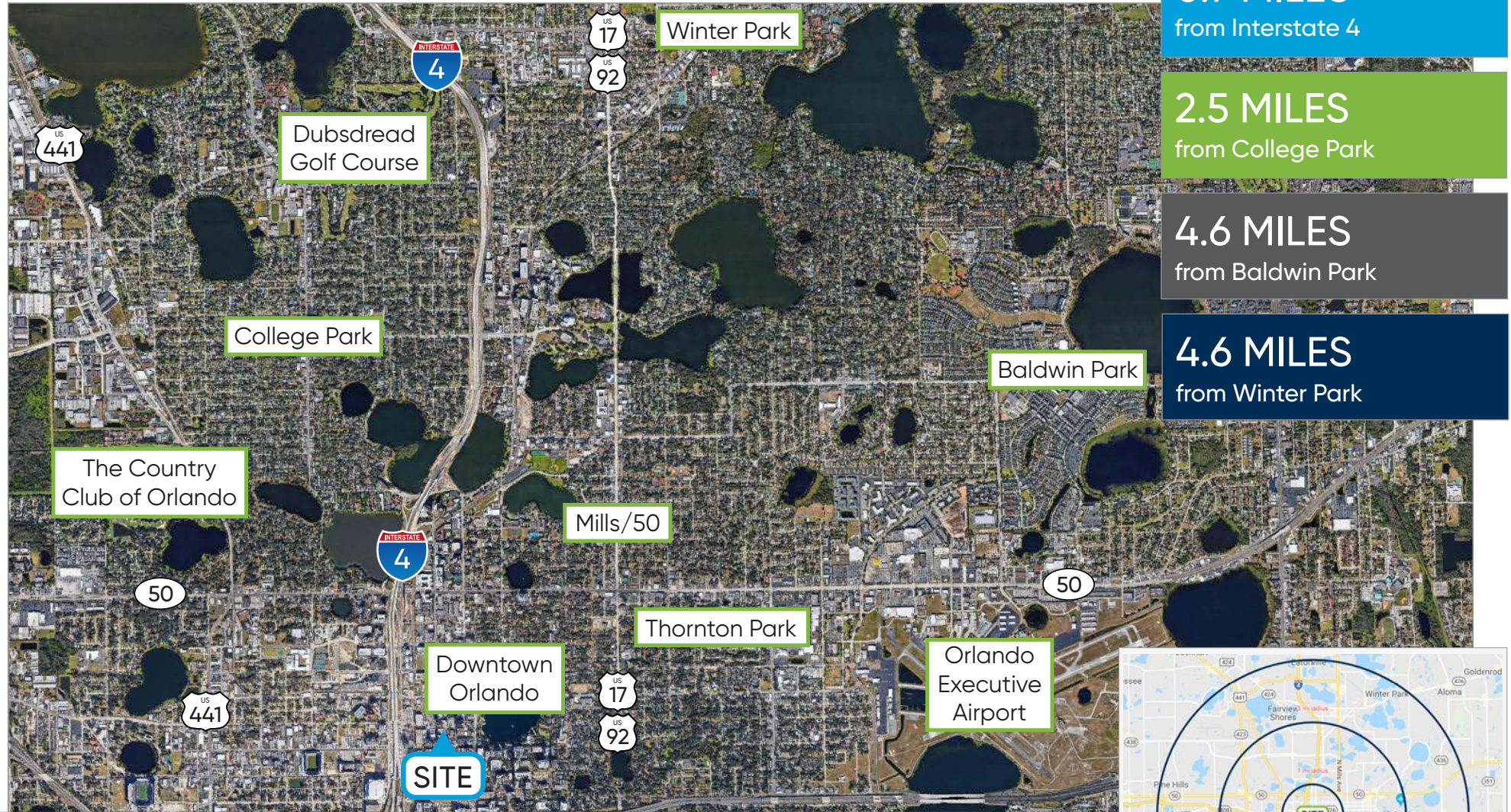


AMENITIES

- 10 Private Offices
- Large Open Center Area
- Hardwood Floors
- Exposed Brick Walls



Location Aerial



Radius	Population	HH Income	Businesses	Employees
1-Mile	21,203	\$82,481	5,357	66,496
3-Mile	96,810	\$85,816	14,149	180,345
5-Mile	296,272	\$75,596	26,137	279,798

