



**Bishop Beale Duncan**  
COMMERCIAL REAL ESTATE

Old Winter Garden Road  
Ocoee, Florida 34761

**COMMERCIAL/OFFICE/MEDICAL OPP.**



## AVAILABLE

- + Sale Price: Negotiable
- + Zoning: Commercial
- + Outparcels: 1-8.5 Acres

**207,819** 5 Mile Population

1 Mile Median \$ **89,241**  
HH Income

## Highlights

- Located Less than 1 Mile from Orlando Health's Health Central Hospital with 211 Beds
- Within 2 Miles of the West Oaks Mall with Anchor Tenants like AMC Theaters, JC Penney & Michael's
- Under 2 Miles from the Florida Turnpike & 429
- Ideal For: Commercial, Office or Medical User
- 32,100 AADT on Old Winter Garden Road
- 29,100 AADT on Maguire Road

**JILL ROSE**  
VP of Retail Services  
(407) 734.7204  
Jill@BBDRE.com

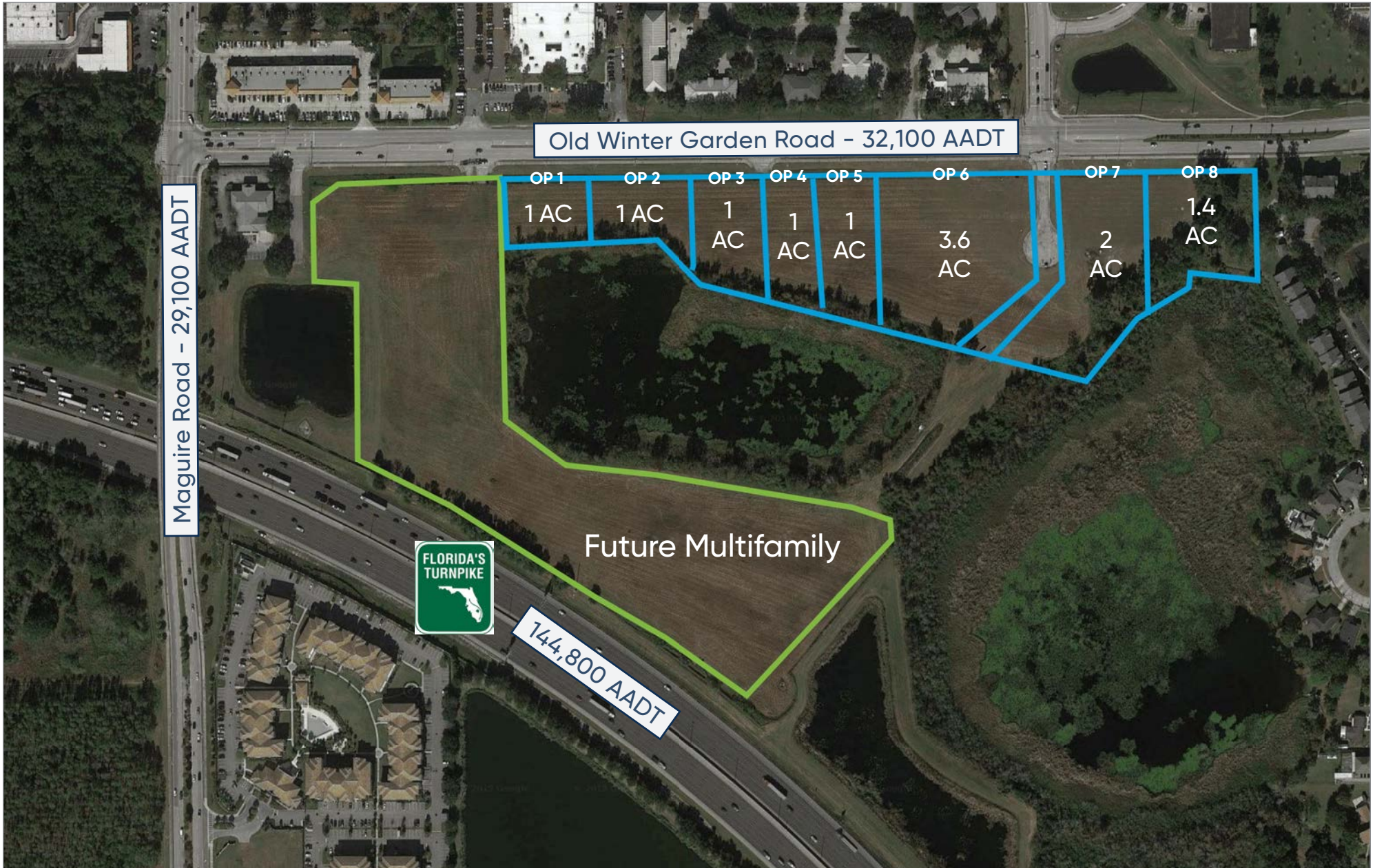
**JP BEAULIEU, CCIM, CLS**  
Director of Retail Services  
(407) 734.7201  
JP@BBDRE.com



**BISHOP BEALE DUNCAN**  
250 N. Orange Ave., Ste. 1500  
Orlando, FL 32801 + (407) 426.7702

[www.BBDRE.com](http://www.BBDRE.com)

# Site Plan



# Points of Interest Map

