



Bishop Beale Duncan  
COMMERCIAL REAL ESTATE

707 East Colonial Drive  
Orlando, Florida 32803

**PROF. OFFICE BUILDING ON HWY 50**

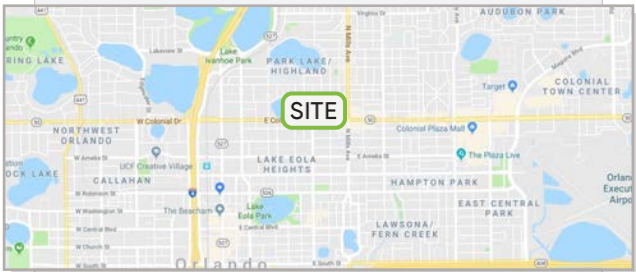


## For Lease

- + Lease Rate: \$1,800/Month MG + Sales Tax
- + Available SF: ±1,000 SF
- + Building Size: 4,878 SF
- + Land Size: 6,271 SF
- + Zoning: MU-1/T

## Highlights

- Professional Office Building in a great central location, minutes from Downtown Orlando
- 4.5 Miles from Winter Park and 2.3 Miles from College Park
- Under 1 -Mile to Interstate 4
- 44,000 AADT on East Colonial Drive
- 2 Covered Parking Spaces
- Built in 1960
- Storefront Signage



**SCOTT WILLIAMSON**

Senior Associate  
(407) 734.7261  
Scott@BBDRE.com

This offer is subject to errors, omissions, prior sale or withdrawal without notice.

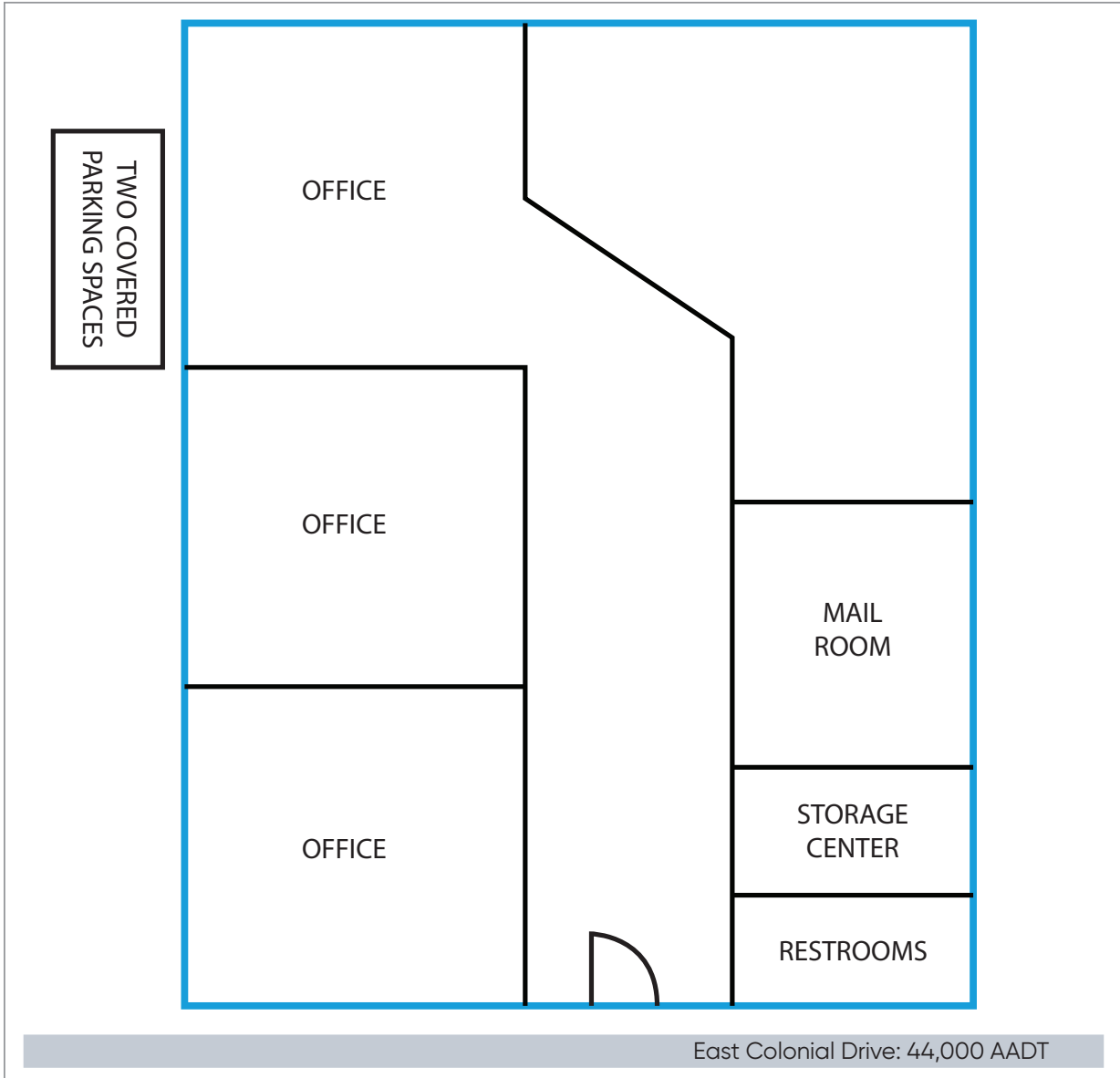


**BISHOP BEALE DUNCAN**

250 N. Orange Ave., Ste. 1500  
Orlando, FL 32801 + (407) 426.7702

[www.BBDRE.com](http://www.BBDRE.com)

# Floor Plan

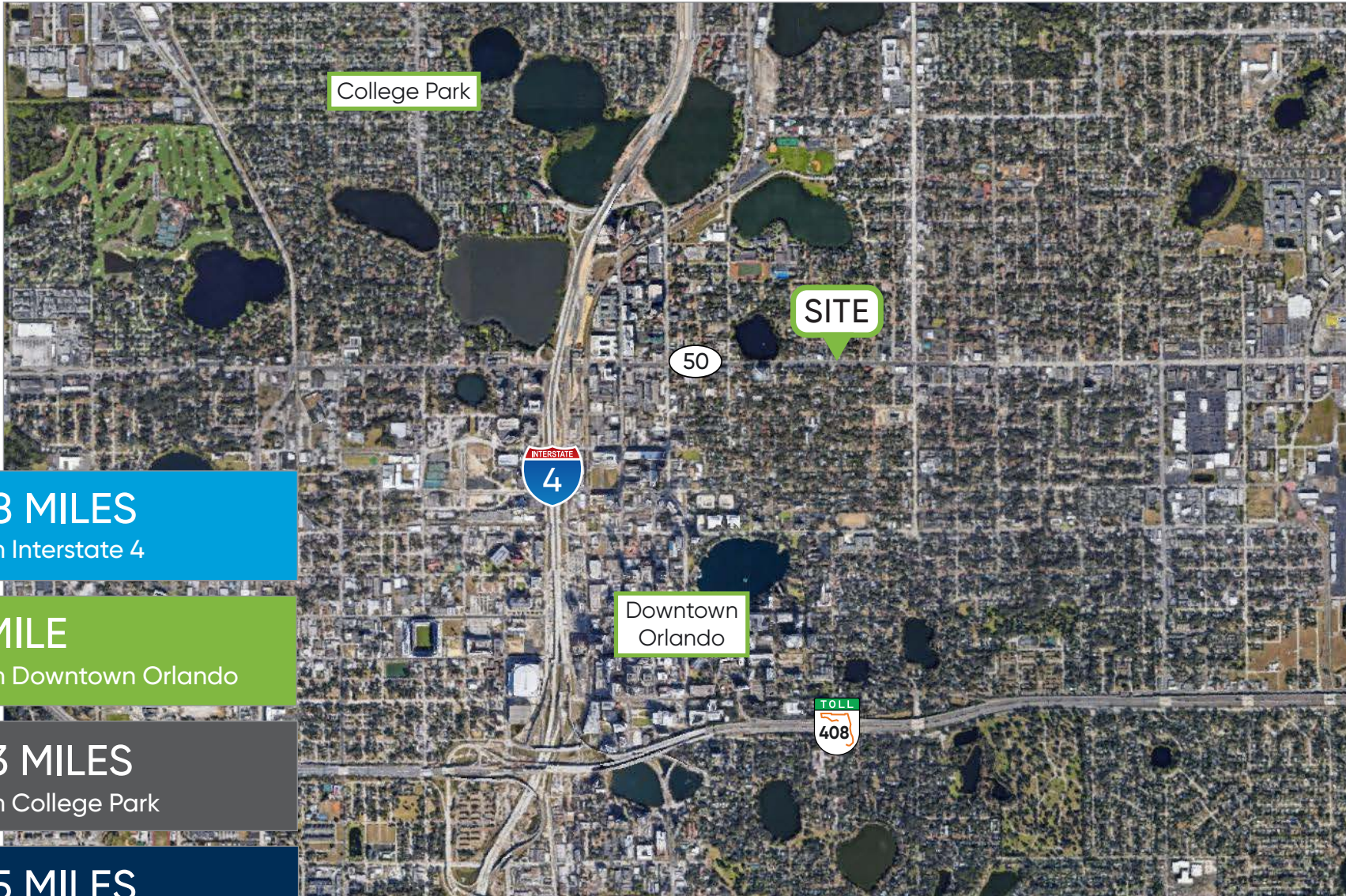


## AMENITIES

- 3 Offices
- Mail Room
- Storage Center
- Private Restrooms
- Two Covered Parking Spaces



# Location Aerial



**0.8 MILES**  
from Interstate 4

**1 MILE**  
from Downtown Orlando

**2.3 MILES**  
from College Park

**4.5 MILES**  
from Winter Park

