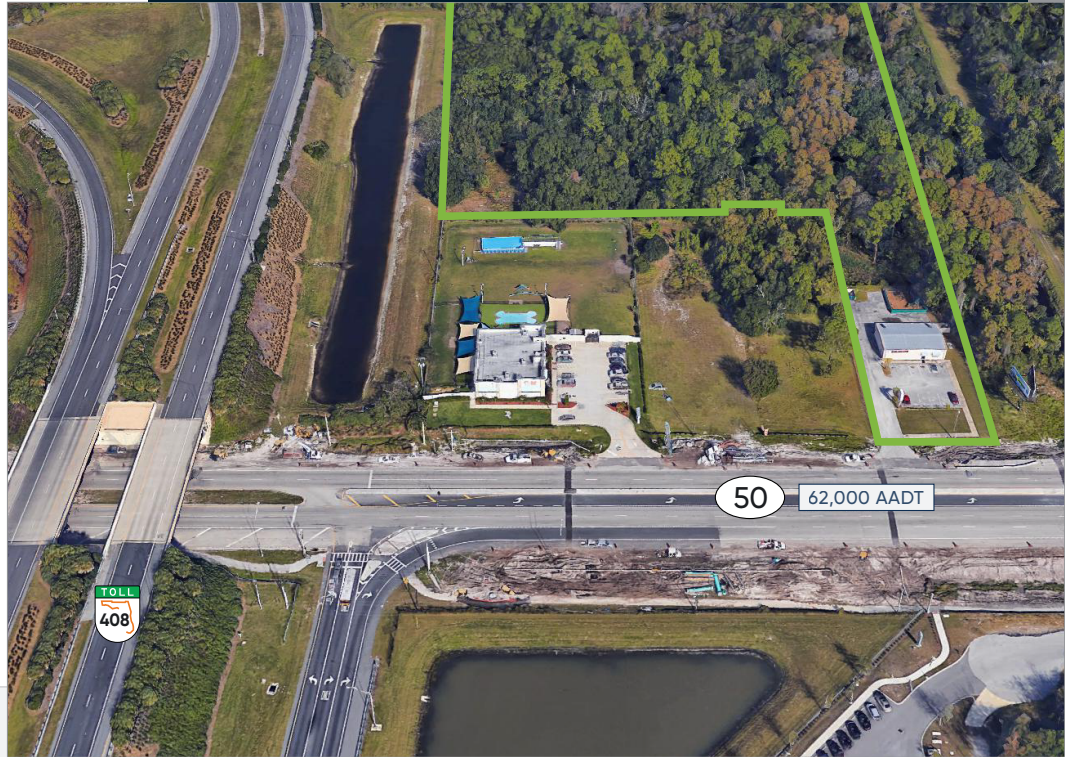
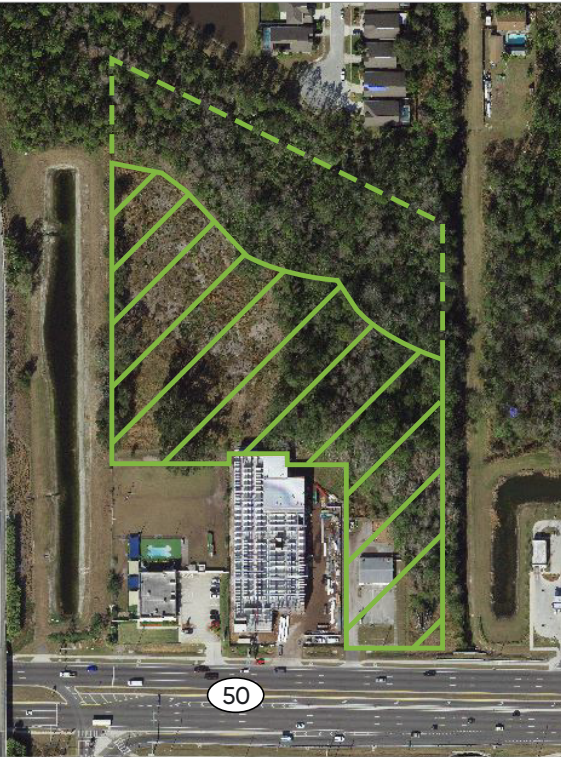




Bishop Beale Duncan
COMMERCIAL REAL ESTATE

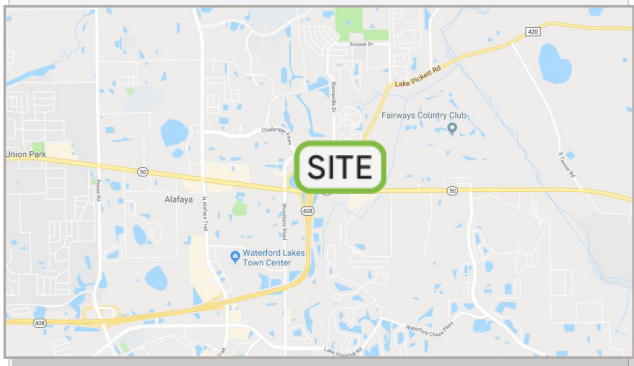
12727 East Colonial Drive
Orlando, Florida 32826

DEVELOPMENT OPPORTUNITY ON E. COLONIAL



FOR SALE

- + **Sale Price:** Negotiable
- + **Land Size:** 8.17 Gross Acres
5.33 Developable
- + **Zoning:** R-2 & C-1



Highlights

- Future Land Use: 10 du/ac (Low-Medium Density Residential)
- Direct access to East Colonial Drive and quick access to the 408 East-West Expressway
- Road improvements are planned east along Highway 50
- Just 1.7 miles from the University of Central Florida campus consisting of over 68,000 students
- 169' of linear frontage on East Colonial Drive
- Potential Use: Student Housing/Multifamily
- 62,000 AADT on East Colonial Drive

JONATHAN CLAYTON

Director
(407) 734.7212
Jonathan@BBDRE.com

KYLE WOOD

Executive VP
(407) 734.7206
Kyle@BBDRE.com



BISHOP BEALE DUNCAN

250 N. Orange Ave., Ste. 1500
Orlando, FL 32801 + (407) 426.7702

www.BBDRE.com

This offer is subject to errors, omissions, prior sale or withdrawal without notice.

Location Aerial & Demographics

