



Bishop Beale Duncan
COMMERCIAL REAL ESTATE

JOHN YOUNG BUSINESS CENTER

8865 Commodity Circle, Ste 7
Orlando, Florida 32819

MEDICAL-OFFICE-RETAIL CONDO

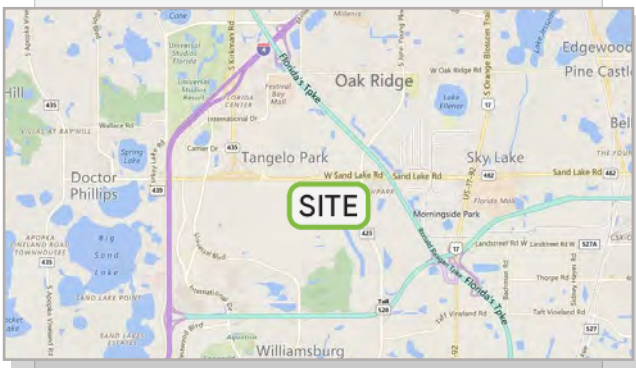


For Sale

- + Sale Price: \$895,000
- + Total SF: 4,560 SF
- + First Floor: 2,410 SF
- + Second Floor: 2,150 SF

Highlights

- Located within the John Young Business Center
- This 2-story office condo sits directly on the well-traveled John Young Parkway with over 46,000 cars per day
- Built-out condo is laid out for single or dual tenancy with entry to the second floor suite through an interior stairwell and/or elevator
- Plumbing can be accessed through all interior walls, allowing for easy installation of sinks for a multitude of uses
- Suite built in 2014, building built in 2007
- Roadside monument and suite signage
- Ample surface parking



SCOTT WILLIAMSON

Senior Associate
(407) 734.7261
Scott@BBDRE.com

This offer is subject to errors, omissions, prior sale or withdrawal without notice.



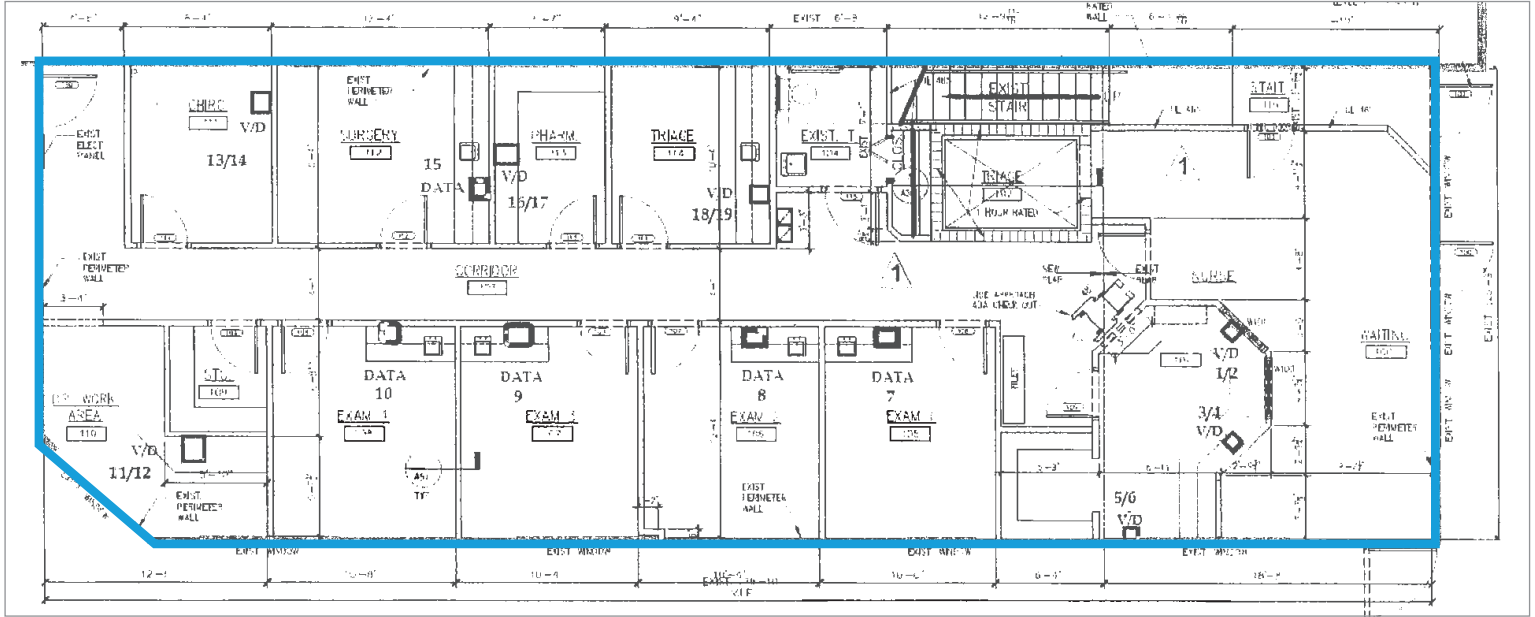
BISHOP BEALE DUNCAN

250 N. Orange Ave., Ste. 1500
Orlando, FL 32801 + (407) 426.7702

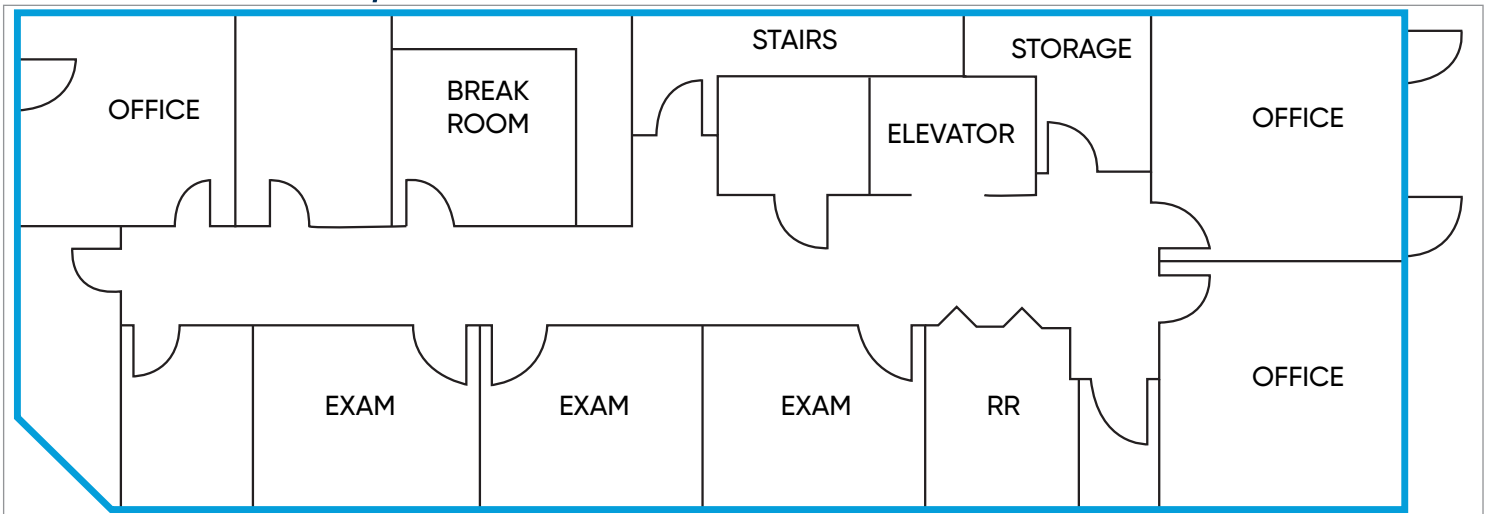
www.BBDRE.com

Floor Plans

First Floor - 2,410 SF



Second Floor - 2,150 SF



Location Aerial

