



Bishop Beale Duncan
COMMERCIAL REAL ESTATE

250 NORTH

250 North Orange Avenue
Orlando, Florida 32801

CBD - MOVE-IN READY OFFICES

ALL INCLUSIVE RATES AVAILABLE



250North.com



SCAN ME

FOR LEASE

- + Lease Rate: From \$2,275/Month
- + Available SF: 1,013 - 7,016 SF
- + Suite Options: Full Floor
Split Floor
Small Suites

LEASE - ALL INCLUSIVE!

- All Included:
 - + Electric & Air Conditioning
 - + Janitor/Cleaning
 - + Parking
 - + Move-In Ready Suites
- Surface level parking included in rent
- One block from the Orange County Courthouse
- Within walking distance from many restaurants, cafes, coffee shops, and bars
- Located off of W. Robinson St. which provides very quick access to I-4, State Road 408, East Colonial Drive (SR-50), and 17-92
- Suites delivered with new flooring and paint
- Floor to ceiling windows, with spectacular downtown views

\$3+ Million
in Building Improvements
in the Past **3 Years**



JONATHAN CLAYTON
Director
(407) 734.7212
Jonathan@BBDRE.com



BISHOP BEALE DUNCAN
250 N. Orange Ave., Ste. 1500
Orlando, FL 32801 + (407) 426.7702

www.BBDRE.com

This offer is subject to errors, omissions, prior sale or withdrawal without notice.

Property Details



| MOVE-IN READY & CUSTOMIZABLE | | |
|------------------------------|------------------------|---------------------|
| 5th Floor | 2 Suites | 1,257 SF & 2,239 SF |
| 6th Floor | 2 Suites or Full Floor | 1,425-4,784 SF |
| 8th Floor | Full Floor | 7,016 SF |
| 9th Floor | 1 Suite | 980 SF |
| 11th Floor | 1 Suite | 1,013 SF |

2022 Downtown Demographics



71,900

Total Jobs Downtown



55.1%

Bachelors Degree or Higher



\$78,300

Average Salary Downtown



373

2022 Business Licenses Issued Downtown

\$3+ MILLION IMPROVEMENTS

Interior & Exterior Finishes, Parking Lot Improvements, Lobby Renovations, New Elevator Cabs, Upgraded Technology

FRIENDLY AND RESPONSIVE

On-Site Management

LOWER COST A/C

OUC Chilled Water

SURFACE + GARAGE PARKING

Rare opportunity for surface level parking included in rental rate, with additional parking available in city garages

CLOSE TO BUS AND TRAIN

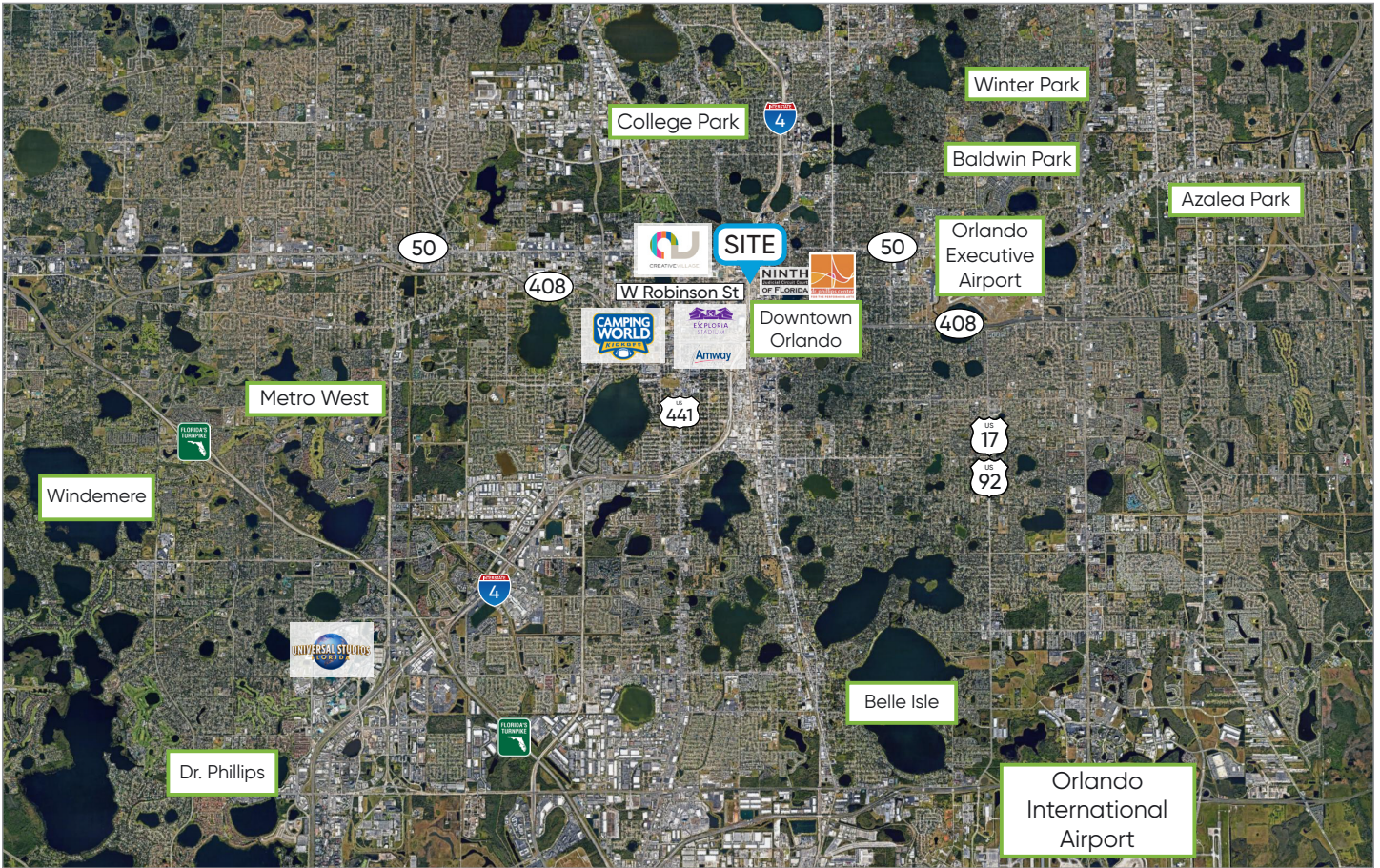
Sunrail and Lynx Bus stations conveniently located 2 blocks away

RETAIL BANKING SERVICE

Seacoast Bank on the 1st Floor



Location Details



3 Minutes
from Creative Village & Amway Center

4 Minutes
from Exploria Stadium

5 Minutes
from Dr. Phillips Center

8 Minutes
from Camping World Stadium

10 Minutes
from Orlando Health

24 Minutes
from Orlando International Airport

| 2022 Demographics | Zip Code: 32801 |
|--------------------------|-----------------|
| Total Population | 21,338 |
| Median Age | 34.4 |
| Average Household Income | \$80,986 |
| Total Businesses | 6,069 |
| Total Employees | 54,399 |

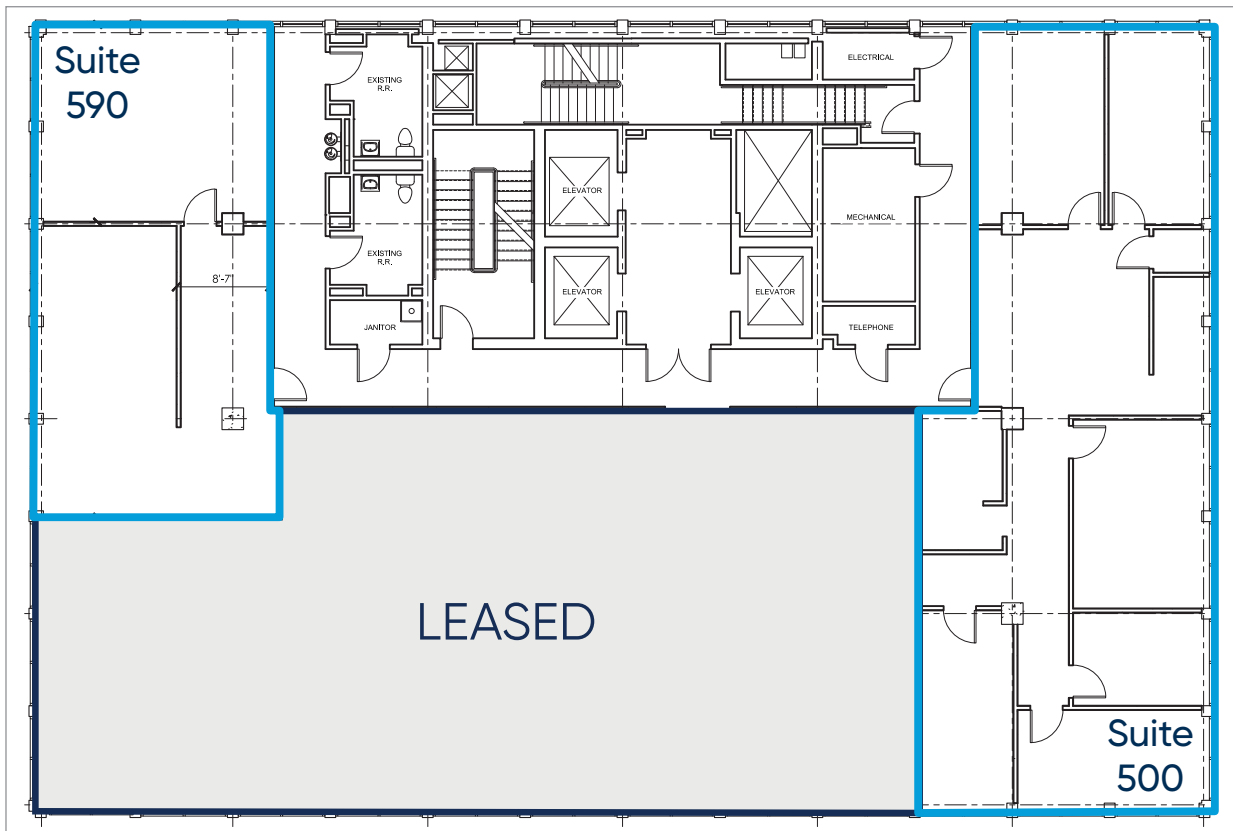
Main Street of Downtown Orlando

The Downtown Office Tower is located within one block of the Orange County Courthouse, next to the central station hub for mass transit including commuter rail and bus transit and within Orlando's Central Business District consisting of 11+ Million square feet of office space and over 13,000 residential units.

It is easily accessible from Interstate-4, Orange Avenue and the major east/west downtown thoroughfare, Robinson Street.



Office Suites



SUITE 500



SUITE 590

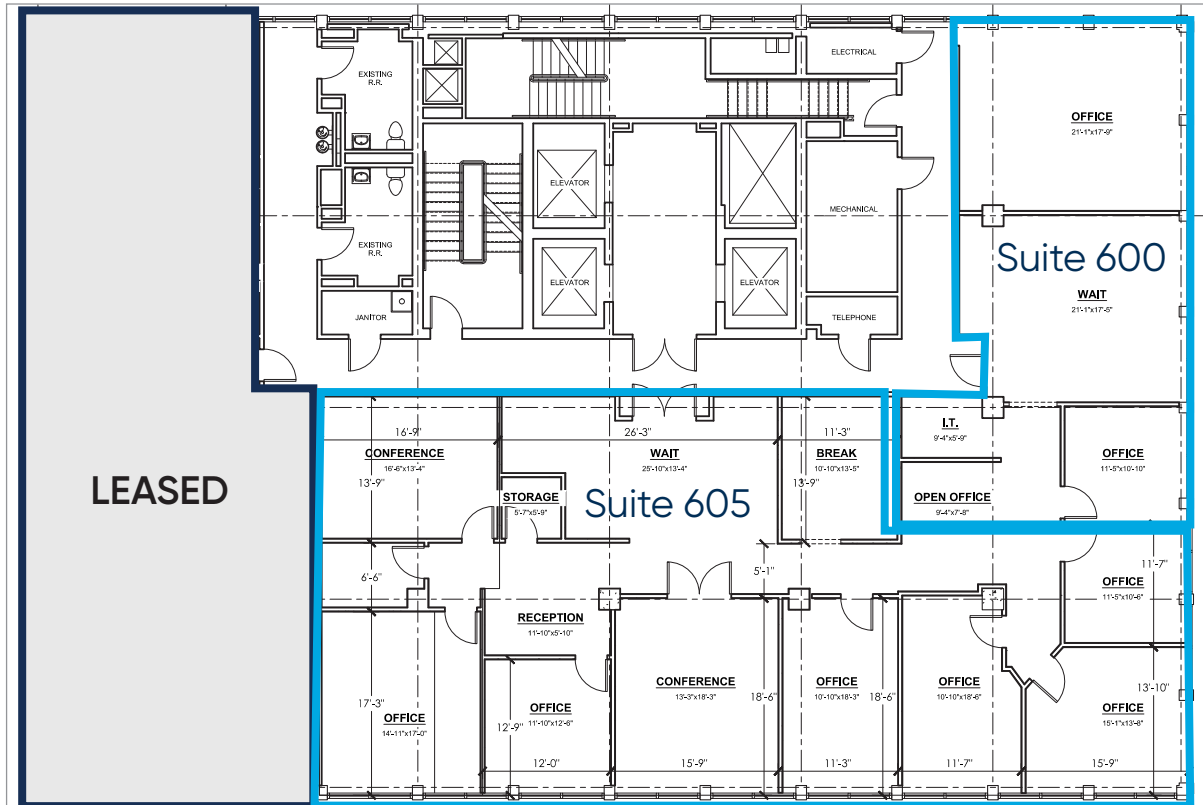


5TH FLOOR

- Suite 500: 2,239 SF-\$5,050/month + sales tax
 - + 1 surface level parking spot included in the rate
 - + Reception
 - + 5-6 Offices & 1-2 Conference Rooms
 - + Break Area
-
- Suite 590: 1,257 SF-\$2,850/month + sales tax
 - + 1 surface level parking spot included in the rate
 - + Reception
 - + Large open work space
 - + Large office/conference room



Office Suites



6TH FLOOR

- Full Floor: Up to 4,784 SF-\$27.50 Full Service
 - + Suites can be easily combined
- Suite 600: 1,425 SF-\$3,250/month + sales tax
 - + 1 surface level parking spot included in the rate
 - + Reception
 - + 7 Private Offices
 - + Conference Room
- Suite 605: 3,359 SF-\$7,700/month + sales tax
 - + 1 surface level parking spot included in the rate
 - + Reception
 - + 7 Private Offices
 - + Conference Room
 - + Break Room with Plumbing

6th Floor - Interior Images

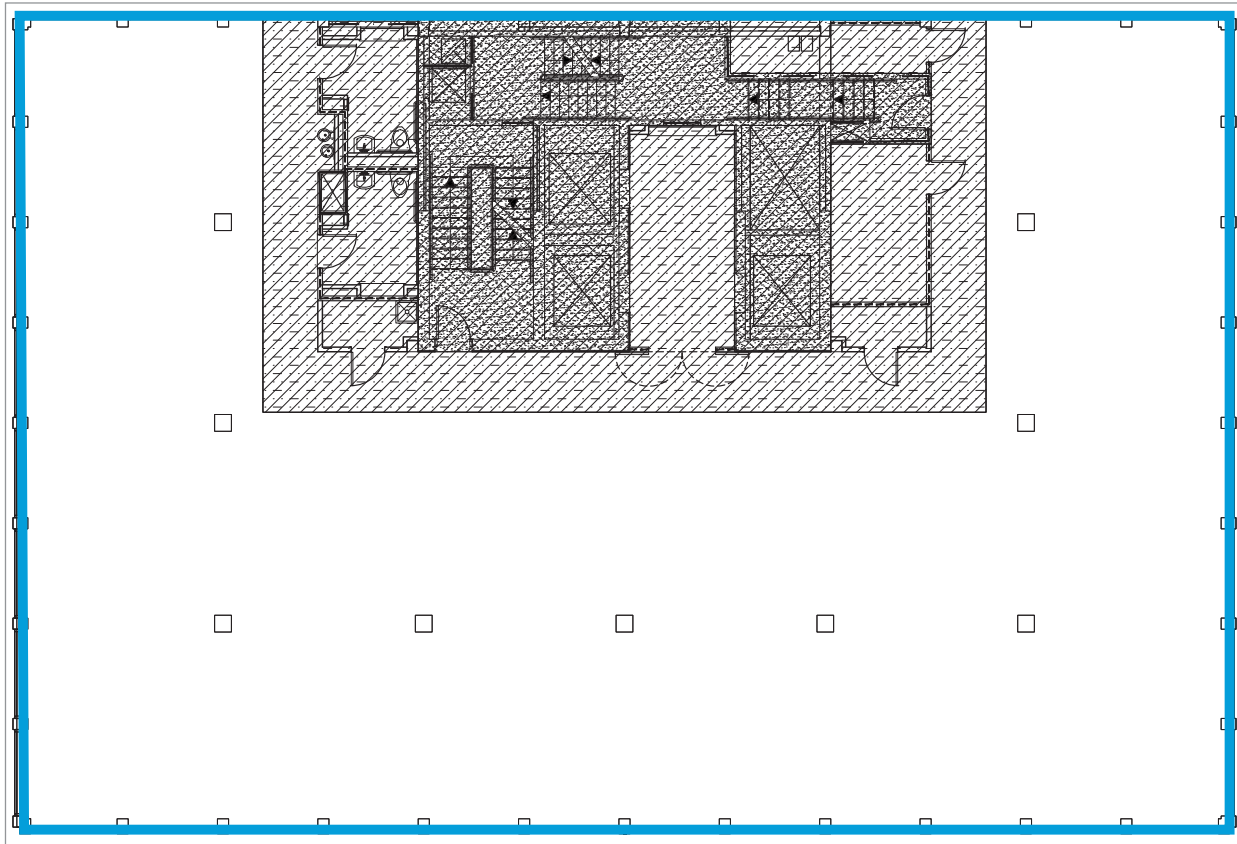
Suite 600



Suite 605



Full Floor

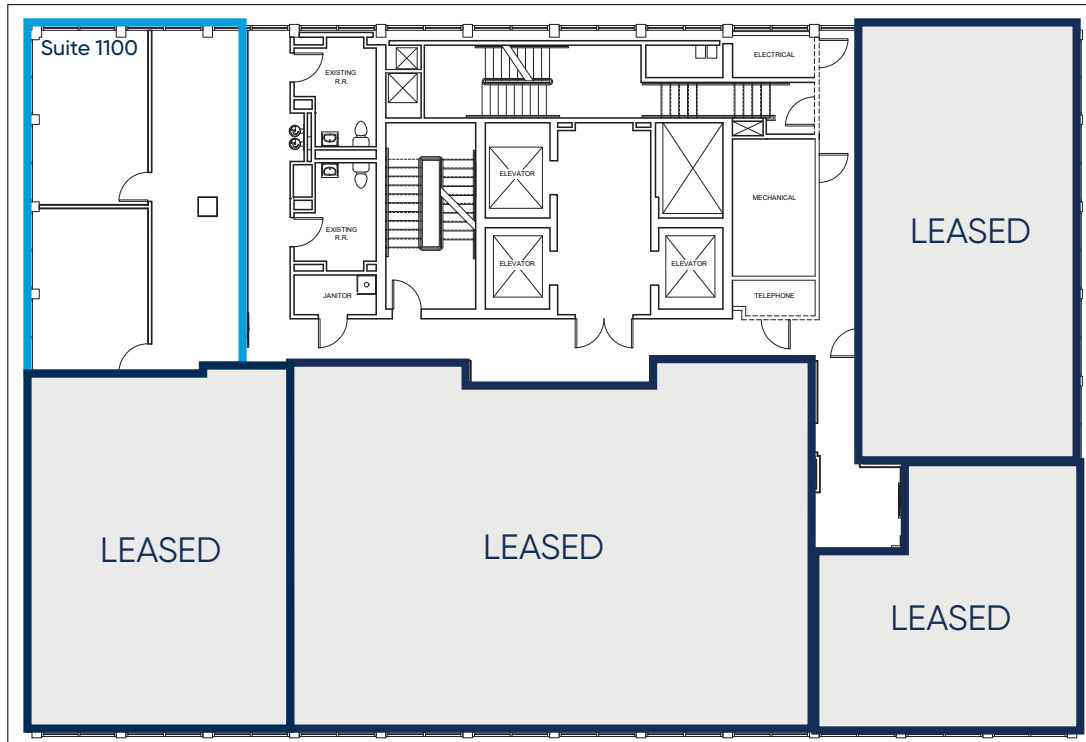


8TH FLOOR

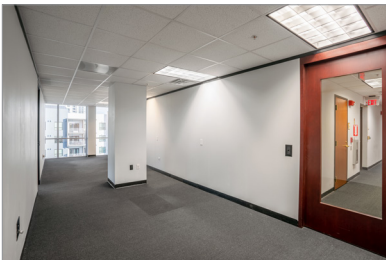
- Full Floor - Suite 800: 7,016 SF-\$27.50/SF Full Service
 - + 1 surface level parking spot included in the rate
 - + Entire Vacant Floor Plate
 - + Floor to Ceiling Windows
 - + Landlord will Deliver with Drop Ceilings, HVAC, and Flooring



Office Suites



SUITE 1100



11TH FLOOR

- Glass doors in both suites
- **Suite 1100: 1,013 SF - \$2,275/month + sales tax**
 - + 1 surface level parking spot included in the rate
 - + Reception Area
 - + Open Work Area
 - + 2 Large Private Offices

